

## Ayden Pullover

By Tabettha Hedrick

Level: Intermediate



### SIZES

Small (Medium, Large, XL)

Shown in Small Size

### FINISHED MEASUREMENTS

**Bust:** 40½ (40½, 50½, 50½)''

**Length:** 22½ (23½, 24¾, 26)''

### MATERIALS

**Premier® Yarns Wool Worsted** (100% wool; 100gm/186 yds)

- #35-120 Raspberry – 6 (6, 8, 9) balls

**Needle:** US Size 9 (5.5 mm) 24'' circular needle *or size needed to obtain gauge*

**Notions:** Tapestry needle, stitch markers, cable, H-8 (5mm) crochet hook

### GAUGE

19 sts x 25 rows = 4'' in Ayden Stitch

**Save time, check your gauge.**

### STITCH GUIDE

**Wrap6:** Place next 6 stitches on to a cable needle. Wrap working yarn, counterclockwise around the 6 stitches. Then knit those stitches as normal.

#### **K2P2 Ribbing** (*multiple of 4 sts + 2*)

**Row 1:** K1, \*p2, k2; rep from \* to last st, k1.

Repeat Row 1 for patt.

#### **Ayden Stitch - FLAT** (*multiple of 24 sts + 2*)

**Row 1 (RS):** K1, \*p2, k8, Wrap6, k8; rep from \* to last st, k1.

**Row 2 and all WS rows:** K1, \*[p2, k2] 5 times, p2, k2; rep from \* to last st, k1.

**Rows 3, 5, and 7:** K1, \*p2, k22; rep from \* to last st, k1.

**Row 9:** K1, \*p2, k4, Wrap6, k2, Wrap6, k4; rep from \* to last st, k1.

**Rows 11, 13, and 15:** K1, \*p2, k22; rep from \* to last st, k1.

**Row 17:** K1, \*p2, Wrap6, k10, Wrap6; rep from \* to last st, k1.

**Rows 19, 21, and 23:** K1, \* p2, k22; rep from \* to last st, k1.

**Row 25:** K1, \*p2, k4, Wrap6, k2, Wrap6, k4; rep from \* to last st, k1.

**Rows 27, 29, and 31:** K1, \*p2, k22; rep from \* to last st, k1.  
**Row 32:** K1, \* [p2, k2] 5 times, p2, k2; rep from \* to last st, k1.  
Repeat Rows 1-32 for patt.

**Ayden Stitch - ROUND** (*multiple of 24 sts*)

**Rnd 1 (RS):** \*P2, k8, Wrap6, k8; rep from \* to end of rnd.  
**Rnd 2 and all even Rnds:** \*[P2, k2] 6 times; rep from \* to end of rnd.  
**Rnds 3, 5, and 7:** \*P2, k22; rep from \* to end of rnd.  
**Rnd 9:** \*P2, k4, Wrap6, k2, Wrap6, k4; rep from \* to end of rnd.  
**Rnds 11, 13, and 15:** \*P2, k22; rep from \* to end of rnd.  
**Rnd 17:** \*P2, Wrap6, k10, Wrap6; rep from \* to end of rnd.  
**Rnds 19, 21, and 23:** \*P2, k22; rep from \* to end of rnd.  
**Rnd 25:** \*P2, k4, Wrap6, k2, Wrap6, k4; rep from \* to end of rnd.  
**Rnds 27, 29, and 31:** \*P2, k22; rep from \* to end of rnd.  
**Rnd 32:** \* [P2, k2] 6 times; rep from \* to end of rnd.  
Repeat Rnds 1-32 for pattern.

**PATTERN NOTES**

Front and Back pieces are worked flat and seamed together. Then sleeves are picked up around the armholes and worked in the round.

**PULLOVER**

**Back**

Cast on 98 (98, 122, 122) sts.

Work 18 rows of K2P2 Ribbing, ending with a WS row.

Change to Ayden Stitch-FLAT patt and work even, repeating rows 1-32, for a total of 118 (126, 134, 142) rows or until piece measures a finished length of 23¼ (23¼, 24½, 25¾) inches from cast-on edge, ending with a WS row.

**Shape Back Neck (RS):** Work in patt across 23 (23, 29, 27) sts, bind off center 52 (52, 64, 68) sts, work to end of row.

**Row 2 (WS):** Work in patt across 23 (23, 29, 27) sts, join new yarn on other side of neck, work to end of row. Bind off shoulder sts loosely.

**Front**

Cast on 98 (98, 122, 122) sts.

Work 18 rows of K2P2 Ribbing, ending with a WS row.

Change to Ayden Stitch-FLAT patt and work even, repeating rows 1-32, for a total of 110 (118, 126, 134) rows or until piece measures a finished length of 21¼ (22, 23¼, 24½) inches from cast-on edge, ending with a WS row.

**Shape Front Neck (RS):** Work in patt across 23 (23, 29, 27) sts, bind off center 52 (52, 64, 68) sts, work to end of row.

**Row 2 (WS):** Work in patt across 23 (23, 29, 27) sts, join new yarn on other side of neck, work to end of row.

Continue patt as established, working each side of neck at the same time, for a total of 8 more rows. Bind off shoulder sts loosely.

## FINISHING

Block pieces to measurements.

With yarn threaded on a tapestry needle, sew shoulder seams.

Sew side seams from cast-on to end of 18-row ribbing.

## Sleeves

With circular needles and RS facing, pick up and knit, at a rate of approximately 1 st per 2 rows, 120 (120, 144, 144) sts evenly around armhole.

**Set-up Rnd:** \*P2, k2; rep from \* to end of round.

**Next Rnd:** Begin Rnd 1 of Ayden Stitch-Round pattern.

Work even through Rnd 32 then repeat Rnds 1-32 once more.

Repeat Set-Up Rnd twice.

Bind off loosely.

Block Sleeves to measurements.

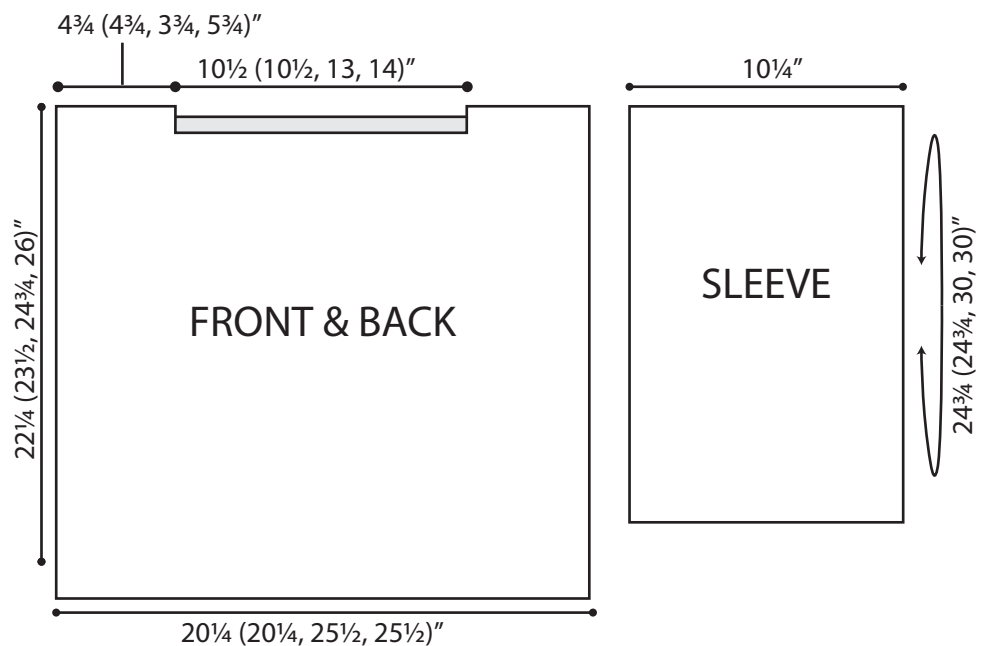
Weave in ends.

## Neck Trim

Using a crochet hook, join yarn at left shoulder seam, \*ch 1, sc evenly around neckline, join with sl st to ch 1; rep from \* once, break yarn, weave in end.

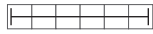
## Abbreviations

ch	chain
k	knit
p	purl
patt	pattern
rem	remain(ing)
rep	repeat(ing)
rnd(s)	round(s)
RS	right side
sc	single crochet
st(s)	stitch(es)
WS	wrong side



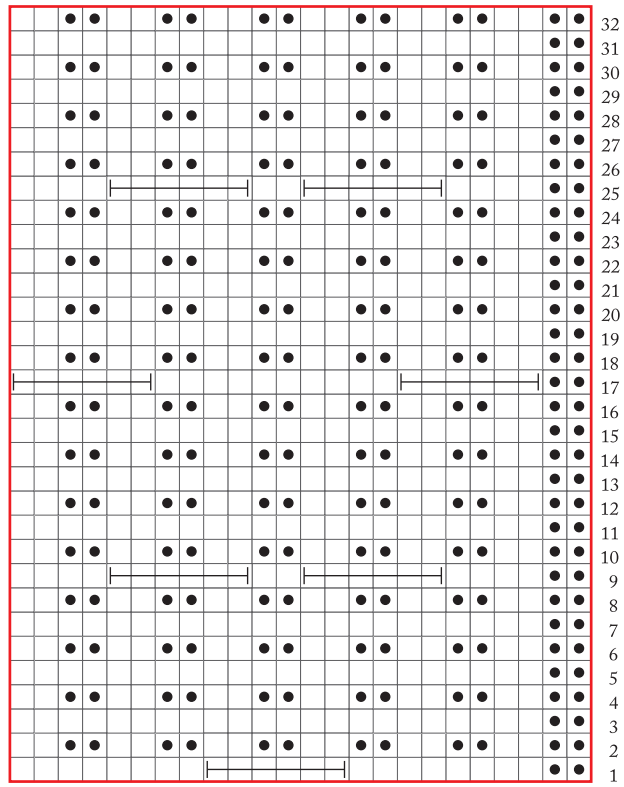
Legend

- RS: Knit  
WS: Purl
- RS: Purl  
WS: Knit



Wrap 6

Ayden Stitch - In the Round



Ayden Stitch - Worked Flat

