



SIZES

Small/Medium (Large/1X)

Shown in Small/Medium Size.

FINISHED MEASUREMENTS

Bust: 40 (48)"

Length (not including turtleneck): 16 (18)"

MATERIALS

Deborah Norville Collection Wool Naturals by Premier Yarns® (100% wool; 100g/205 yds)

- DNC425-04 Slate (MC) – 3 (6) skeins
- DNC425-01 Cream (CC) – 1 (2) skeins

Needles: US Size 7 (4.5 mm) 24", 36" circular needle *or size needed to obtain gauge*

Notions: Stitch marker, tapestry needle

GAUGE

20 sts x 26 rows = 4" in St st

Save time, check your gauge.

Directions:

PATTERN NOTES

The color change patterns in this poncho are worked using stranded knitting. When working with 2 different colors, hold 1 color in each hand to knit, or simply knit with 1 color, drop it and pick up the other color and begin working.

Switch to shorter needle length at last decrease round.

PONCHO

With A and longer ndl, cast on 330 (400) sts. Place marker and join to work in the rnd, being careful not to twist sts.

Hem

Knit 4 rnds. Purl 1 rnd (turning ridge).

Body

Knit every Rnd until Poncho measures 4 (5)" from turning ridge.

Dec rnd 1: * K9 (8), k2tog; rep from * to end – 300 (360) sts rem. Knit 1 rnd.

Work Rnds 1-15 of Star Chart, changing colors as indicated – chart will be rep 20 (24) times around Body. Break CC.

With MC, knit 1 rnd.

Dec rnd 2: * K4, k2tog; rep from * to end – 250 (300) sts rem. Knit 12 (18) rnds.

Dec rnd 3: * K3, k2tog; rep from * to end – 200 (240) sts rem. Knit 1 rnd.

Work Rnds 1-5 of Zig-Zag chart, changing colors as indicated. Break CC. With MC, knit 1 rnd.

Dec rnd 4: * K3, k2tog; rep from * to end – 160 (192) sts rem. Knit 8 rnds.

Work Rnds 1-5 of Zig-Zag chart. Break CC. With MC, knit 14 rnds.

Dec rnd 5: * K6, k2tog; rep from * to end – 140 (168) sts rem. Knit 1 rnd.

Large/1X Size only: * K5, k2tog; rep from * to end – 140 sts rem.

Both Sizes: Knit 8 rnds.

Turtleneck

Next rnd: * K2, p2; rep from * to end. Rep this rnd until Turtleneck measures 8". Bind off all sts loosely in patt.

FINISHING

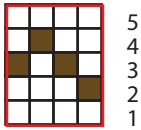
Weave in ends. Allow Turning Ridge at hem to naturally fold so the first few rows lay on the inside. Sew down cast-on edge to inside of Poncho. Block Poncho to even out stranded knitting.

Lay out Poncho. Measure 6½ (7½)" from one side. Sew through both layers for 2", forming sleeve. Repeat for other side.

Abbreviations

CC	contrast color
dec'd	decreased
k	knit
k2tog	knit 2 stitches together (1 st dec'd)
mc	main color
p	purl
patt	pattern
rem	remain
rep	repeat
rnd	round

Zig-Zag chart

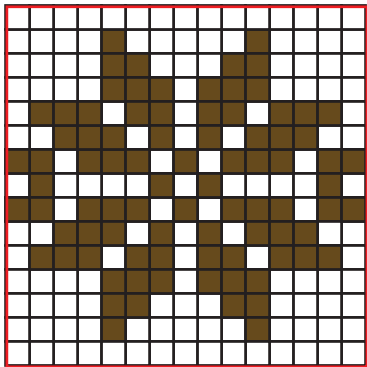


5
4
3
2
1

Key

- with CC, knit
- with MC, knit
- pattern repeat

Star Chart



15
14
13
12
11
10
9
8
7
6
5
4
3
2
1



15 st repeat