



**SIZES**

3 (6, 12) months

**FINISHED MEASUREMENTS**

**Chest:** 18 (19, 20)''

**Length:** 21¼ (21½, 21¾)''

**MATERIALS**

**Premier Yarns®** *Primo* (100% anti-pilling acrylic; 100g/273 yds)

- 28-01 White – 3 (4, 4) balls

**Needles:** US Size 6 (4 mm) 24'' & 16'' circular and double-pointed needles **or size to obtain gauge**

**Notions:** 3 - 5/8'' buttons, US Size G-6 (4 mm) crochet hook, waste yarn, split-ring stitch markers, tapestry needle

**GAUGE**

24 sts x 32 rows = 4'' in St st

22 sts x 31 rows = 4'' in patt st

**Save time, check your gauge.**

**Directions:**

**STITCH GUIDE**

**Bobble – MB:** [K1, yo, k1, yo, k1] in next st, turn, p5, sl 2<sup>nd</sup>, 3<sup>rd</sup>, 4<sup>th</sup> and 5<sup>th</sup> sts over first st, turn, sl rem st to right hand ndl.

**Ssp:** Sl 2 sts individually kwise, sl 2 sts back to LH ndl in this position, p2tog tbl (1 st dec'd).

**w&t (RS):** With RS facing, sl next st pwise, bring yarn to front of work, sl st back to LH ndl and bring yarn to back of work, and turn work to WS.

**w&t (WS):** With WS facing, sl next st pwise, bring yarn to back of work, sl st back to LH ndl and bring yarn to front of work, and turn work to RS.

**Working Wraps Together with Sts:** Insert RH ndl from below the wrap lying at the base of the wrapped st, then into the wrapped st; knit or purl the wrap and the st tog.

**Chart A (Multiples of 10 sts)**

**Rnd 1 (RS):** \* Yo, k3, sl 1 kwise, k2tog, pssso, k3, yo, k1; rep from \* to end.

**Rnds 2, 4, & 6:** Knit.

**Rnd 3:** \* K1, yo, k2, sl 1 kwise, k2tog, pssso, k2, yo, k2; rep from \* to end.

**Rnd 5:** \* K2, yo, k1, sl 1 kwise, k2tog, pssso, k1, yo, k3; rep from \* to end.

**Rnd 7:** \* K3, yo, sl 1, k2tog, pssso, yo, k4; rep from \* to end.

**Rnd 8:** K4, MB, k5; rep from \* to end.

Rep Rnds 1-8 for Chart A.

#### **Chart B** (*Multiples of 10 sts*)

**Rnd 1:** \* Yo, k3, sl 1 kwise, k2tog, pssso, k3, yo, k1; rep from \* to end.

**Rnd 2 (and all even-numbered rnds):** Knit.

**Rnd 3:** \* K1, yo, k2, sl 1 kwise, k2tog, pssso, k2, yo, k2; rep from \* to end.

**Rnd 5:** \* K2, yo, k1, sl 1 kwise, k2tog, pssso, k1, yo, k3; rep from \* to end.

**Rnd 7:** \* K3, yo, sl 1, k2tog, pssso, yo, k4; rep from \* to end.

**Rnd 8:** Knit.

Rep Rnds 1-8 for Chart B.

#### **Chart C**

**Rnd 1:** \* Yo, ssk, k1, sl 1, k2tog, pssso, k1, k2tog, yo, k1; rep from \* to end.

**Rnd 2 (and all even numbered rnds):** Knit.

**Row 3:** \* K1, yo, k1, sl 1, k2tog, pssso, k1, yo, k2; rep from \* to end.

**Row 5:** \* K2, yo, sl 1, k2tog, pssso, yo, k3; rep from \* to end.

**Row 7:** \* Yo, ssk, sl 1, k2tog, pssso, k2tog, yo, k1; rep from \* to end.

**Row 9:** \* K1, yo, sl 1, k2tog, pssso, yo, k2; rep from \* to end.

**Row 10:** Knit.

#### **GOWN**

##### **Sleeves** (*Make 2*)

With dpns, cast on 42 (46, 48) sts, leaving a long tail. Divide sts evenly between 3 dpns, place marker, and join to work in the rnd, being careful not to twist.

**Rnd 1:** Knit.

**Turning rnd:** \* Yo, k2tog; rep from \* around.

Work even in St st for 5 (5, 6) rnds, ending last rnd 2 sts before end of rnd.

Place next 4 (5, 4) underarm sts on waste yarn, removing marker.

Sl rem 38 (41, 44) sts to separate waste yarn and set aside.

##### **Body**

With longer circular ndls, cast on 180 (190, 200) sts. Place marker and join to work in the rnd, being careful not to twist.

**Rnd 1 (RS):** Work rnd 1 of Chart A.

Cont in patt through rnd 8.

**Next rnd:** Work rnd 1 of Chart B.

Cont in patt, rep rnds 1-8, 15 times through.

**Next rnd:** Work rnd 1 of Chart C.

Cont in patt, working rnds 1-10 once through, changing to shorter circular ndls when necessary — 108 (114, 120) sts rem.

Work even in St st until piece measures 17½”.

### Divide for Armholes & Join Sleeves

**Next rnd:** K28 (30, 31) sts (left back) and sl 4 (5, 4) previous sts to waste yarn (left underarm); k54 (57, 60) sts (front) and sl 4 (5, 4) previous sts to waste yarn (right underarm), k24 (25, 27) sts (right back), bind off 2 sts, and remove m. **Note:** Remainder of garment is worked back and forth in rows.

**Joining row:** K24 (25, 27) sts, pm, k38 (41, 44) sleeve sts on hold, pm, k50 (52, 56) sts, pm, k38 (41, 44) sleeve sts on hold, pm, knit 24 (25, 27) sts, and turn—174 (184, 198) sts.

Purl 1 WS row.

### Shape Sleeves and Body

**Dec row (RS):** \* Knit to 2 sts before m, k2tog, sl m, ssk; rep from \* 3 more times, knit to end – 8 sts dec'd.

**Dec row (WS):** \* Purl to 2 sts before m, ssp, sl m, p2tog; rep from \* 3 more times, purl to end – 8 sts dec'd.

Rep these 2 rows, once – 142 (152, 166) sts rem.

**Next row:** Rep Dec row (RS).

Purl 1 WS row.

Rep these 2 rows 8 (9, 10) more times – 70 (72, 78) sts rem.

### Shape Left Front Neck

**Short row 1 (RS):** [Knit to 2 sts before marker, k2tog, sl m, ssk] twice, k4, w&t (RS).

**Short row 2 (WS):** Purl to end.

**Short row 3:** [Knit to 2 sts before marker, k2tog, sl m, ssk] twice, k1, w&t (RS).

**Short row 4:** Purl to end.

**Next row (RS):** Work Dec row (RS), working wraps together with wrapped sts.

### Shape Right Front Neck

**Short row 1 (WS):** [Purl to m, sl m] twice, p6, w&t (WS).

**Short row 2 (RS):** [Knit to 2 sts before m, k2tog, sl m, ssk] twice, knit to end.

**Short row 3:** [Purl to m, sl m] twice, p3, w&t (WS).

**Short row 4:** K1, k2tog, sl m, ssk, knit to 2 sts before next m, k2tog, sl m, ssk, knit to end.

**Next row (WS):** Purl, working wraps together with wrapped sts – 46 (48, 54) sts rem.

### Neckband

**Row 1 (RS):** Knit, without dec.

**Row 2:** Purl.

**Row 3 (Turning row):** K1, \* yo, k2tog; rep from \* to last st, end k1.

**Row 4:** Purl. Bind off all sts loosely. Break yarn, leaving a long tail.

### FINISHING

At neck, fold bound-off edge to WS at turning row and sew in place.

Rep for cast-on edges of sleeves.

### Button Band

With RS facing and crochet hook, join yarn at right back neck edge and sc evenly down side of back opening, turn.

**Next row (WS):** Ch 1, sc in each sc across. Fasten off, leaving a 4" tail. Mark button placement by inserting 3 split-ring stitch markers onto band, with top marker ¼" from neck edge and rem 2 spaced approx 1" apart.

**Buttonhole Band:**

With RS facing and crochet hook, join yarn at left back opening and sc evenly to neck edge, turn.

**Next row (WS):** Ch 1, sc in first sc, ch 1, skip 1 sc (opposite button marker), \* sc in next sc and in each sc to opposite next marker, ch 1, skip 1 sc; rep from \* once, sc in each sc to end.

Fasten off, leaving a 4" tail.

Place button band behind buttonhole band and use tails to sew lower edges of bands to bound-off sts at lower center back.

Graft underarm seams closed using Kitchener st.

Sew buttons opposite buttonholes.

Weave in ends.

Block.

**Abbreviations**

**bef** before

**ch** chain

**circ** circular

**dec('d)** decrease(d)

**dpn** double point needle

**folll** following

**k** knit

**k2tog** knit 2 sts together (1 st dec'd)

**kwise** knitwise

**m** marker

**meas** measures

**ndl(s)** needle(s)

**p** purl

**p2tog** purl 2 sts together (1 st dec'd)

**patt** pattern

**pm** place marker

**pssso** pass slipped stitch over

**pwise** purlwise

**rem** remain(ing)

**rep** repeat(ing)

**rnd(s)** round(s)

**RS** right side

**sc** single crochet

**sk** skip

**sl** slip

**ssk** slip next 2 sts individually knitwise, slip them back to left needle in this position, knit them together through the back loops (1 st dec'd)

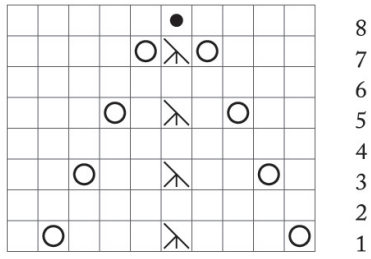
**WS** wrong side

**yo** yarn over

Legend

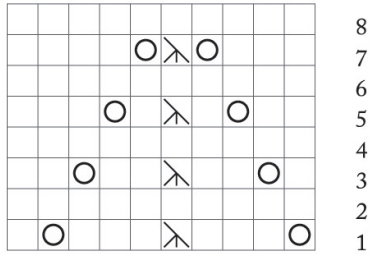
- RS: Knit  
WS: Purl
- Yo
- K2tog
- Ssk
- Sl 1, k2tog, pss0
- Make Bobble
- No Stitch

Chart A



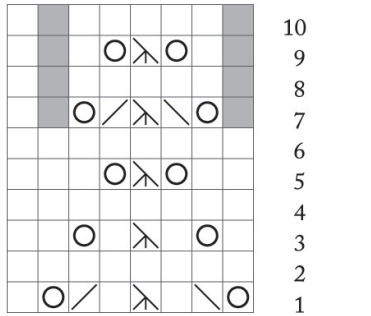
8  
7  
6  
5  
4  
3  
2  
1

Chart B



8  
7  
6  
5  
4  
3  
2  
1

Chart C



10  
9  
8  
7  
6  
5  
4  
3  
2  
1

