

Bluebell Dress

By Premier Yarns Design Team
Level: Intermediate



SIZES

3-6 (9-12, 18-24)m
Shown in 12m

FINISHED MEASUREMENTS

Bust: 18 1/2 (22 1/2, 24 1/2)''

MATERIALS

Premier Yarns® Afternoon Cotton (100% egyptian giza mercerized cotton; 50gm/136 yds)

- 22-01 White – 2 (3, 4) balls

Needle and Hook: US Size 4 (3.5 mm) straight needle and US Size D-3 (3.25) crochet hook *or size needed to obtain gauge*

Notions: Tapestry needle, 1yd -3/4'' ribbon

GAUGE

22 dc x 10½ rows = 4'' in crochet

24 sts x 36 rows = 4'' in Bluebell Lace

Save time, check your gauge.

Directions:

STITCH GUIDE

Bluebell Lace (multiple of 9 sts + 2)

Row 1 (RS): K2, * k1, k2tog, yo, k1, yo, ssk, k3; rep from * across.

Row 2 and all WS rows: Purl.

Row 3: K2, * k2tog, yo, k3, yo, ssk, k2; rep from * across.

Row 5: K2, * k1, k2tog, yo, k1, yo, ssk, k3; rep from * across.

Row 7: K2, * yo, ssk, k3, k2tog, yo, k2; rep from * across.

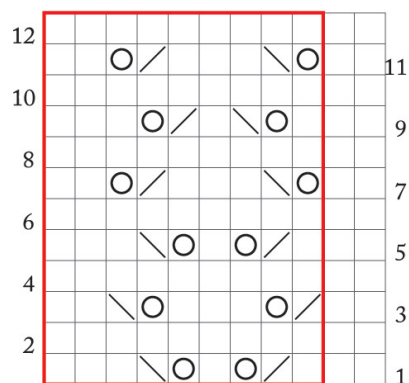
Row 9: K2, * k1, yo, ssk, k1, k2tog, yo, k3; rep from * across.

Row 11: K2, * yo, ssk, k3, k2tog, yo, k2; rep from * across.

Rep Rows 1-12 for patt.

Legend

- RS: Knit
WS: Purl
- K2tog
- Ssk
- Yo



DRESS

Back

Skirt

With knitting needles, cast on 56 (65, 74) sts.

Purl 1 row.

Beginning with Row 1 of Bluebell Lace, work in patt until Skirt measures 9 (10, 12½)", ending with a WS row.

Shape Armholes

Keep sts in patt when a full repeat is available, working edge sts in St st when you no longer have a full repeat of Lace patt at the edge of the row.

Bind off 2 sts at the beg of the next 2 rows – 52 (61, 70) sts.

Dec Row (RS): K1, ssk, work in patt to last 3 sts, k2tog, k1 – 2 sts dec'd.

Rep Dec Row every RS row, 13 (16, 19) more times, ending with a WS row – 24 (27, 30) sts.

Bind off all sts.

Front

Work as for Back.

Sleeves (make 2)

With crochet hook, ch 36 (42, 46).

Row 1: Dc in 4th ch from hk (3 sk'd ch count as 1 dc), dc in each ch across, turn – 34 (40, 44) dc.

Row 2 (Underarm): Sl st in 1st 2 dc, ch 3 (counts as dc throughout), sk next dc, dc in next 29 (35, 39) dc, turn leaving last 2 dc unworked – 30 (36, 40) dc.

Dec Row: Ch 3, sk next dc, dc2tog over next dc, dc in each dc to last 3 dc, dc2tog over next dc, dc in last dc, turn – 2 dc dec'd.

Rep Dec Row, 5 (6, 8) more times – 18 (22, 22) dc.

Next Row: Ch 3, sk next dc, dc in each dc across, turn.

Rep last row until Sleeve cap height matches Sleeve Shaping on Back.

Fasten off.

FINISHING

Sew raglan seams.

Sew underarm, Sleeve and side seams.

Sleeve Edging

With crochet hook, join yarn at seam along beg-ch edge.

Rnd 1: Ch 1, work 32 (38, 42) sc along beg-ch edge, sl st in 1st sc to join.

Rnd 2: Ch 1, [sc in next sc, (sc, ch 3, sc) in next sc] around, sl st in 1st sc to join.

Fasten off.

Neck Edging

With crochet hook, join yarn at Back left raglan seam.

Rnd 1: Ch 1, work 78 (96, 106) sc around neck edge, sl st in 1st sc to join.

Rnd 2: Ch 1, sc in each sc around, sl st in 1st sc to join.

Rnd 3: Ch 1, [sc in next sc, (sc, ch 3, sc) in next sc] around, sl st in 1st sc to join.

Fasten off.

Bottom Edging

With crochet hook, join yarn at side seam.

Rnd 1: Ch 1, work 110 (132, 154) sc around bottom edge, sl st in 1st sc to join.

Rnd 2: Ch 1, sc in each sc around, sl st in 1st sc to join.

Rnd 3: Ch 1, [sc in next sc, (sc, ch 3, sc) in next sc] around, sl st in 1st sc to join.

Fasten off.

Weave in ends.

Thread Ribbon through lace just below Sleeves.

Tie in bow at center front.

Abbreviations

beg begin(ing)

ch chain

dc double crochet

dc2tog double crochet the next 2 sts together (1 st dec)

dec('d) decrease(d)

hk hook

k knit

k2tog knit 2 sts together (1 st dec'd)

patt pattern

rem remain(ing)

rep repeat(ing)

rnd(s) round(s)

RS right side

sc single crochet

sk skip

sl st slip stitch

ssk slip next 2 sts individually knitwise, slip them back to left needle in this position, knit them together through the back loops (1 st dec'd)

st(s) stitch(es)

St st Stockinette stitch: Knit on RS rows, purl on WS rows.

WS wrong side

yo yarn over