



Diamonds & Moss Hat

Level: Intermediate

SIZES

Adult Small (Medium, Large)

FINISHED MEASUREMENTS

Circumference: 18½ (20¼, 22¼)''

Height: 10''

MATERIALS

Premier® Yarns *Wool Select™* (75% Acrylic, 25% Wool; 3.5oz/100g, 273yds/250m)

- 1151-19 Blush – 1 (1) ball

Needle: US Size 6 (4 mm) 16'' circular needle and set of dpns and US Size 5 (3.75 mm) 16'' circular needle *or size needed to obtain gauge*

Notions: Tapestry needle, stitch markers

GAUGE

22 sts x 28 rnds = 4'' in **Moss Stitch** with larger needle

Save time, check your gauge.

STITCH GUIDE

1x1 Rib (*multiple of 2 sts*)

Rnd 1: * K1, p1; rep from * to end.

Rep Rnd 1 for patt.

Diamonds Panel (22 sts, charted on page 3)

Rnds 1 and 2: P6, (k2, p2) twice, k2, p6.

Rnds 3 and 4: P5, k2, p2, k4, p2, k2, p5.

Rnds 5 and 6: P4, k2, (p2, k2) 3 times, p4.

Rnds 7 and 8: P3, k2, p2, k2, p4, k2, p2, k2, p3.

Rnds 9 and 10: (P2, k2) twice, p6, (k2, p2) twice.

Rnds 11 and 12: Work as Rnds 7 and 8.

Rnds 13 and 14: Work as Rnds 5 and 6.

Rnds 15 and 16: Work as Rnds 3 and 4.

Rep Rnds 1-16 for patt.

Moss Stitch (*multiple of 2 sts*)

Rnds 1 and 2: *K1, p1; rep from * to end.

Rnds 3 and 4: *P1, k1; rep from * to end.

Rep Rnds 1-4 for patt.

PATTERN NOTES

The Hat worked from the bottom up in the round.

HAT

Brim

With smaller needles, cast on 102 (112, 122) sts, pm and join to work in the rnd, careful not to twist sts.

Work even in **1x1 Rib** until piece meas 1¼'' from cast-on edge.

Switch to larger needles, work the first 22 sts in **Diamonds Panel**, pm work rem 80 (90, 100) sts in **Moss Stitch**. Cont in patt as est'd until piece meas 8'' from cast-on edge, end having just worked a Rnd 16 of **Diamonds Panel**.

Crown Shaping

Note: Switch to dpns when there are no longer enough sts to work comfortably on circular needle. See chart on page 4.

Rnd 1: P4, p2tog, (k2, p2) twice, k2, ssp, p4, *(k1, p1) 4 times, k2tog; rep from * to end – 10 (11, 12) sts dec'd.

Rnd 2: P5, (k2, p2) twice, k2, p5, *(k1, p1) 4 times, k1; rep from * to end.

Rnd 3: P2, p2tog, k2, p2, k4, p2, k2, ssp, p2, *(p1, k1) 3 times, p1, k2tog; rep from * to end – 10 (11, 12) sts dec'd.

Rnd 4: P3, k2, p2, k4, p2, k2, p3, *p1, k1; rep from * to end.

Diamonds and Moss Hat

By Premier® Yarns Design Team

project continued

Rnd 5: P1, k2tog, k1, (p2, k2) twice, p2, k1, ssk, p1, *(k1, p1) 3 times, k2tog; rep from * to end – 10 (11, 12) sts dec'd.

Rnd 6: P1, (k2, p2) 3 times, k2, p1, *(k1, p1) 3 times, k1; rep from * to end.

Rnd 7: Ssp, k2, p2, k4, p2, k2, p2tog, *(p1, k1) twice, p1, k2tog; rep from * to end – 10 (11, 12) sts dec'd.

Rnd 8: P1, k2, p2, k4, p2, k2, p1, *p1, k1; rep from * to end.

Rnd 9: Ssp, (k2, p2) twice, k2, p2tog, *(k1, p1) twice, k2tog; rep from * to end – 10 (11, 12) sts dec'd.

Rnd 10: P1, (k2, p2) twice, k2, p1, *(k1, p1) twice, k1; rep from * to end.

Rnd 11: Ssp, k2, p4, k2, p2tog, *p1, k1, p1, k2tog; rep from * to end – 10 (11, 12) sts dec'd.

Rnd 12: Ssk, k1, p4, k1, k2tog, *p1, k1, p2tog; rep from * to end – 10 (11, 12) sts dec'd.

Rnd 13: Ssk, k1, p2, k1, k2tog, *k1, p2tog; rep from * to end – 10 (11, 12) sts dec'd.

Rnd 14: Ssk, p2, k2tog, *k2tog; rep from * to end – 10 (11, 12) sts dec'd, 12 (13, 14) sts rem.

Cut yarn leaving a long tail. Thread tail onto tapestry needle and draw through remaining sts.

FINISHING

Weave in ends.

Abbreviations

cont	continue
dec('d)	decrease(d)
dpn(s)	double point needle(s)
est'd	established
k	knit
k2tog	knit 2 sts together (1 st dec'd)
m	marker
meas	measures
p	purl
p2tog	purl 2 sts together (1 st dec'd)
patt	pattern
pm	place marker
rem	remain(ing)
rep	repeat(ing)
rnd(s)	round(s)
ssk	slip next 2 sts individually knitwise, slip them back to left needle in this position, knit them together through the back loops (1 st dec'd)
ssp	slip next 2 sts individually knitwise, slip them back to left needle in this position, purl them together through the back loops (1 st dec'd)
st(s)	stitch(es)

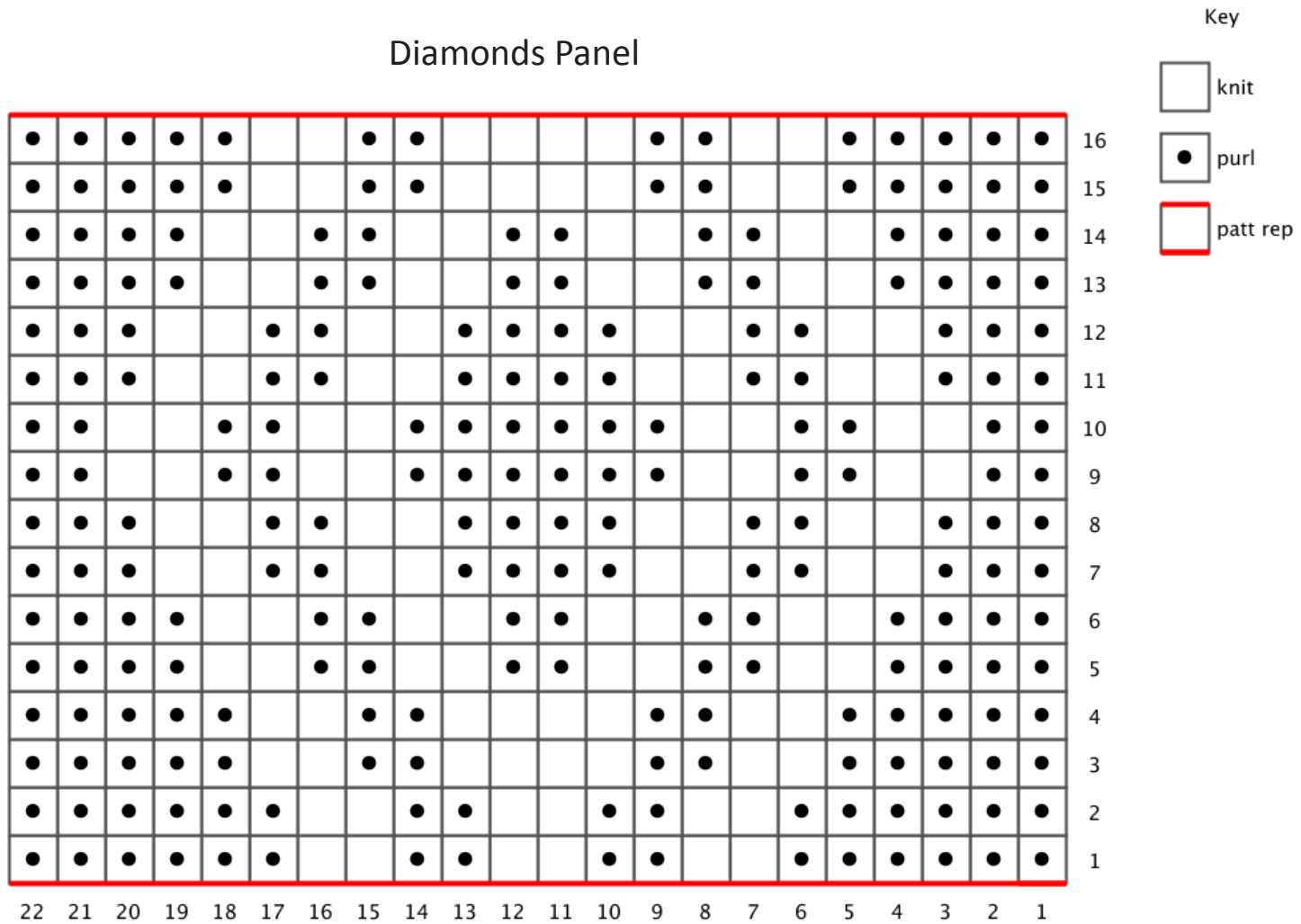


Diamonds and Moss Hat

By Premier® Yarns Design Team

project continued

Diamonds Panel



project continued

Crown Shaping

