



Pattern Collection: Women



Woodlands Yoke Pullover

Designed by Sandi Rosner

SIZES

Small (Medium, Large, 1X, 2X, 3X)
Shown in Medium size.

FINISHED MEASUREMENTS

Bust: 35 (38 $\frac{3}{4}$, 42 $\frac{3}{4}$, 46 $\frac{1}{2}$, 50 $\frac{1}{2}$, 54 $\frac{1}{4}$)"
Length: 25 (25, 25 $\frac{3}{4}$, 26 $\frac{1}{4}$, 26 $\frac{3}{4}$, 27)"

MATERIALS

Universal Yarn *Deluxe Chunky* (100% wool; 100g/120 yds)

- 50003 Musket (MC) – 5 (5, 6, 6, 7, 7) skeins
- 3749 Forest (CC1) – 1 skein, all sizes
- 91475 Sangria (CC2) – 1 skein, all sizes
- 3729 Bronze Brown (CC3) – 1 skein, all sizes

Needles: Needle A: US Size 9 (5.5 mm) 32" circular, set of dpns or size needed to obtain gauge

Needle B: US Size 10 (6 mm) 16" & 32" circular, set of dpns or size needed to obtain gauge

Needle C: US Size 8 (5 mm) 16" & 32" circular, set of dpns

Notions: Stitch markers, stitch holders, tapestry needle

Knit. Relax. Smile. Repeat!

2019 © Universal Yarn, Inc.

All rights reserved.

www.universalyarn.com

This pattern may not be reproduced for business, trade or sale.

GAUGE

16½ sts x 21 rows = 4" in St st with Ndl A

16½ sts x 20 rows = 4" in St st in Woodlands Yoke patt with Ndl B

Save time check your gauge.

For questions about this pattern, please contact patterns@universalyarn.com.

PATTERN NOTES

The Woodlands Edging and Yoke patterns are worked in stranded colorwork. Carry the unused color loosely across the wrong side of the work.

Keep the yarn tension loose. Stranded knitting can pull in and become inelastic without enough slack in the floats (strands on the back of the work). When in doubt, make the floats looser than you think they should be.

STITCH GUIDE

Ribbing

(multiple of 8 sts)

Rnd 1: * P2, k3, p2, k1; rep from * to end.

Rep Rnd 1 for patt.

W&T: Wrap and Turn. To wrap a stitch on RS rows, bring the yarn to the front of the work, slip the next st purlwise to the RH ndl, take the yarn to the back of the work, slip the st back to the left ndl, turn. To wrap a stitch on WS rows, take the yarn to the back of the work, slip the next st purlwise to the RH ndl, bring the yarn to the front of the work, slip the st back to the left ndl, bring the yarn to the front of the work, turn.

Working together wrapped stitches:

On the right side of the work, bring the wrap up onto the needle with the stitch it was wrapped around and knit the 2 stitches together.

SWEATER

Using MC and 32" Ndl C, cast on 144 (160, 176, 192, 208, 224) sts. PM and join to work in the rnd being careful not to twist.

Hem

Work in Ribbing patt until Hem meas 2" from cast-on edge.

Body

Switch to Ndl B. Work Rnds 1-8 of Woodlands Edging chart. Switch to Ndl A. Break CC1 and CC2, cont with MC only. Work even in St st until piece meas 15½" from cast-on edge.

Next Rnd: Knit to last 4 (4, 5, 6, 7, 8) sts, k8 (8, 10, 12, 14, 16) for Left Armhole, place Left Armhole sts on holder, k64 (72, 78, 84, 90, 96) sts for Front, k8 (8, 10, 12, 14, 16) for Right Armhole, Right Armhole sts on holder, knit to end.

Sleeves

Make 2.

Using MC and Ndl C dpns, cast on 32 (32, 40, 40, 48, 48) sts. PM and join to work in the rnd, being careful not to twist.

Cuff

Work in Ribbing patt until Cuff meas 2" from cast-on edge.

Main Sleeve

Switch to Ndl B dpns. Work Rnds 1-8 of Woodlands Edging chart. Break CC1 and CC2, cont with MC only. Switch to Ndl A dpns. Knit 1 Rnd.

Shape Sleeve

Inc Rnd: K1, m1, knit to last st, m1, k1 – 2 sts inc'd. Rep Inc Rnd every 5 Rnds, 8 (11, 10, 13, 11, 14) more times – 50 (56, 62, 68, 72, 78) sts inc'd. Work even in St st until Sleeve meas 17 (17, 17½, 18, 18, 18½)" from cast-on edge.

Next Rnd: Knit to last 4 (4, 5, 6, 7, 8) sts, k8 (8, 10, 12, 14, 16) for Armhole, place these Armhole sts on holder, knit to end – 42 (48, 52, 56, 58, 62) sts rem. Break yarn and place sts on Ndl C circ ndl. After second sleeve, do not break yarn.

Join Body and Sleeves

Joining Rnd: With yarn still attached to second Sleeve, k64 (72, 78, 84, 90, 96) Front sts, pm, k42 (48, 52, 56, 58, 62) sts from first Sleeve, k64 (72, 78, 84, 90, 96) Back sts, k42 (48, 52, 56, 58, 62) sts from second Sleeve, pm for bor – 212 (240, 260, 280, 296, 316) sts.

Raise Back with Short-Rows

Knit. Relax. Smile. Repeat!

2019 © Universal Yarn, Inc.

All rights reserved.

www.universalyarn.com

This pattern may not be reproduced for business, trade or sale.

Row 1 (RS): K23 (25, 27, 29, 31, 33), w&t.
Row 2 (WS): Purl to the marker between Right Sleeve and Front, sl m, p23 (25, 27, 29, 31, 33), w&t.
Row 3: Knit to 5 sts bef last wrapped st, w&t.
Row 4: Purl to 5 sts bef last wrapped st, w&t.
Rows 5 & 6: Rep Rows 3 & 4.
Row 7: Knit to bor marker. Resume knitting in the rnd.
Next Rnd: Knit, knitting wraps tog with their sts and, *at the same time*, dec 20 (24, 20, 16, 8, 4) sts evenly across rnd – 192 (216, 240, 264, 288, 312) sts rem.

Yoke

Knit 0 (0, 3, 6, 8, 10) rnds. Change to Ndl B 32" circ ndl. Work Rnds 1-42 of of Woodlands Yoke chart, changing to 16" circ ndl when there are too few sts to fit comfortably on the 32" ndl – 64 (72, 80, 88, 96, 104) sts rem. Break all colors except MC.

Neckband

Change to Ndl C 16" circ ndl.
Dec Rnd: Knit, decreasing 0 (0, 8, 8, 16) sts evenly across rnd – 64 (72, 30, 30, 88, 88) sts rem.
 Work in Ribbing patt for 1¼". Bind off all sts loosely in patt.

FINISHING

Use Kitchener st to graft held stitches at armholes. Use tails to close any gaps at the ends of the grafts. Gently wash and block to finished measurements. Weave in ends.

Abbreviations

bef before
bet between
CC contrast color
circ circular
cont continue
dpn(s) double pointed needle(s)
est'd established
inc('d) increase(d)
k knit
m marker

m1 insert left needle from front to back under horizontal strand of yarn lying between st just worked and next st, knit or purl this st through the back loop (1 st inc'd)
MC main color
meas measures
ndl needle
p purl
patt pattern
pm place marker
rem remain(ing)
rep repeat
RH right hand
rnd round
RS right side
St st Stockinette stitch (knit on RS rows, purl on WS rows; in the rnd, knit every rnd)
st(s) stitch(es)
WS wrong side

Knit. Relax. Smile. Repeat!

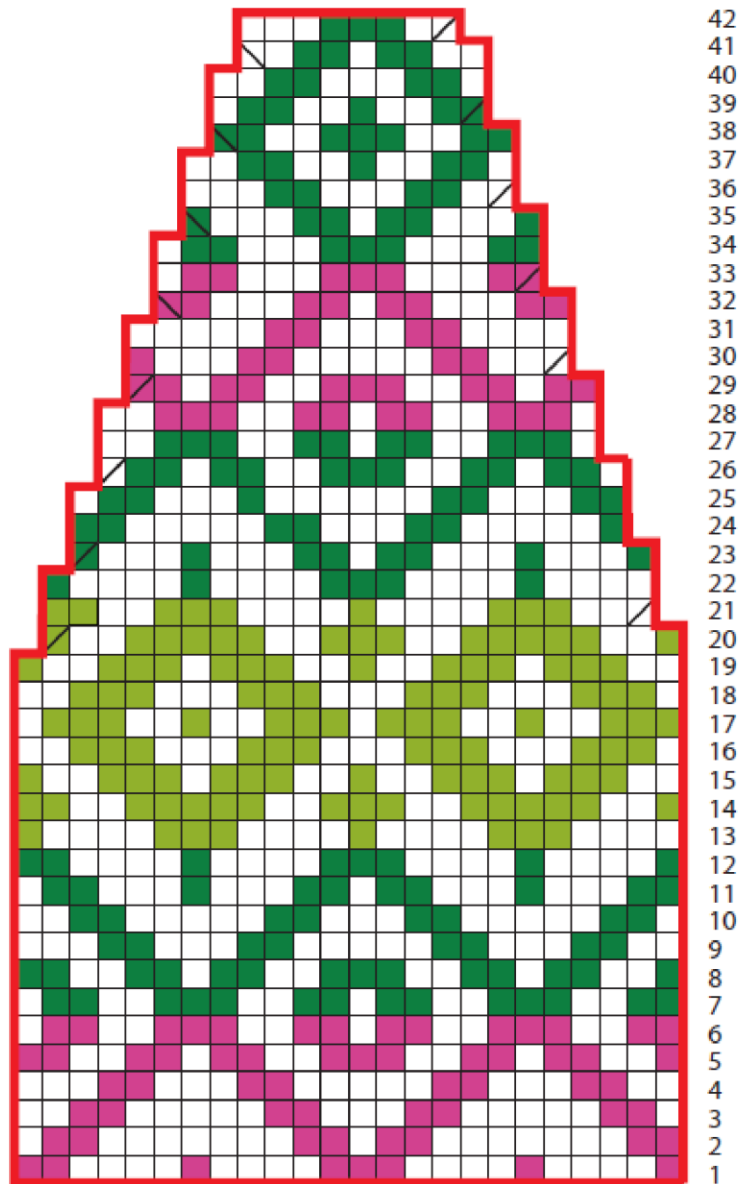
2019 © Universal Yarn, Inc.

All rights reserved.

www.universalyarn.com

This pattern may not be reproduced for business, trade or sale.

Woodlands Yoke



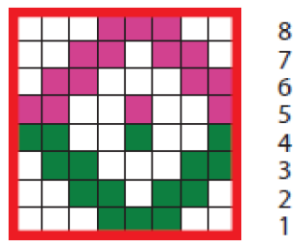
42
41
40
39
38
37
36
35
34
33
32
31
30
29
28
27
26
25
24
23
22
21
20
19
18
17
16
15
14
13
12
11
10
9
8
7
6
5
4
3
2
1

Pattern rep 24 sts

Key

- Knit with MC
- Knit with CC1
- Knit with CC2
- Knit with CC3
- k2tog with indicated color
- ssk with indicated color

Woodlands Edging



Pattern rep
8 sts x 8 rows

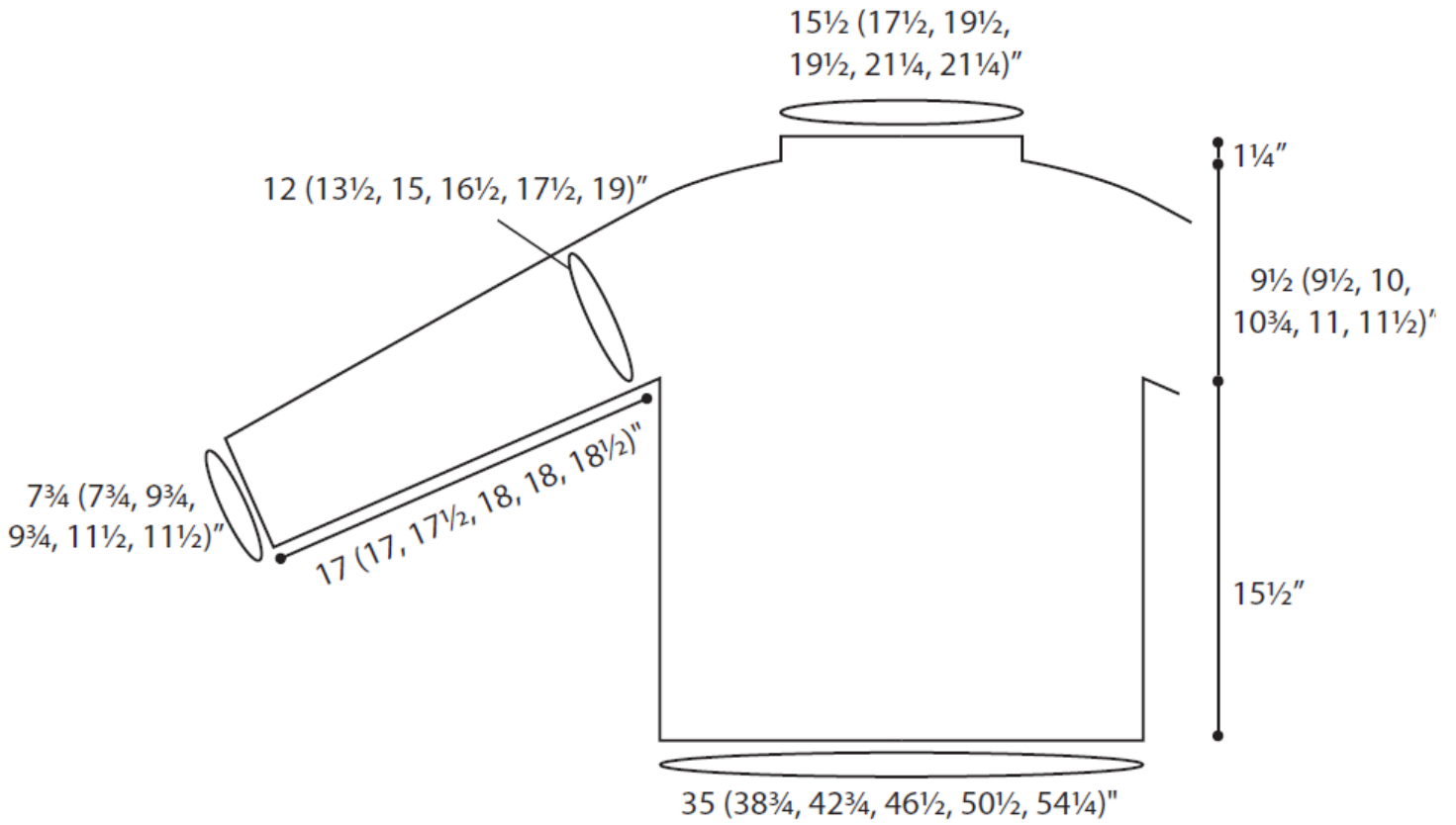
Knit. Relax. Smile. Repeat!

2019 © Universal Yarn, Inc.

All rights reserved.

www.universalyarn.com

This pattern may not be reproduced for business, trade or sale.



Knit. Relax. Smile. Repeat!

2019 © Universal Yarn, Inc.

All rights reserved.

www.universalyarn.com

This pattern may not be reproduced for business, trade or sale.