



## Pattern Collection: Children



### Which Way is Up

Designed by Amy Gunderson

### SIZES

Newborn (6 mo, 12 mo, 2 yr, 4 yr)  
Shown in Newborn size.

### FINISHED MEASUREMENTS

**Chest, Buttoned:** 17 $\frac{3}{4}$  (19 $\frac{1}{2}$ , 21 $\frac{1}{4}$ , 22 $\frac{3}{4}$ , 24 $\frac{1}{2}$ )"

**Length:** 9 (10 $\frac{1}{2}$ , 12, 13 $\frac{1}{2}$ , 15 $\frac{1}{2}$ )"

### MATERIALS

**Universal Yarn Bella Cash** (60% fine merino superwash, 30% nylon, 10% cashmere; 50g/230 yds)

- 104 Sea (A) – 1 (2, 2, 2, 3) skein(s)
- 109 Snow (B) – 1 (2, 2, 3, 3) skein(s)
- 110 Graphite (C) – 1 skein, all sizes

**Needle:** US Size 3 (3.25 mm) 24" circular  
or size needed to obtain gauge  
US Size 2 (2.75 mm) 24" circular

**Notions:** Tapestry needle, 6 (7, 8, 9, 10)  $\frac{5}{8}$ " buttons, stitch markers

### GAUGE

28 sts x 35 rows = 4" in St st using smaller ndl

**Save time, check your gauge.**

*Knit. Relax. Smile. Repeat!*

2017 © Universal Yarn, Inc.

All rights reserved.

[www.universalyarn.com](http://www.universalyarn.com)

This pattern may not be reproduced for business, trade or sale.

## PATTERN NOTES

Sleeves and Body are worked from the bottom up. They are joined together for raglan shaping and completed in one piece. Buttonholes are written to be on the traditional side for a boy's cardigan. If you prefer them to be on the side typically used for girls, simply reverse instructions for Buttonband and Buttonhole Band.

The Arrows pattern on the sleeve cuffs and hem is worked using the stranded method of changing colors. Hold both colors throughout the entire row.

## STITCH GUIDE

### K1, P1 Ribbing

*(odd number of sts)*

**Row 1 (RS):** \* K1, p1; rep from \* to last st, k1.

**Row 2 (WS):** \* P1, k1; rep from \* to last st, p1.

Rep Rows 1-2 for patt.

### K1, P1 Ribbing

*(even number of sts)*

**Row 1:** \* K1, p1; rep from \* to end.

Rep Row 1 for patt.

## Stripe

*(any number of sts)*

**Row 1 (RS):** With C, knit.

**Row 2 (WS):** With C, purl.

**Rows 3-4:** With B, work in St st.

**Rows 5-6:** With C, work in St st.

Rep Rows 1-6, 1 time for patt.

## SLEEVES

With A and smaller ndl, cast on 41 (41, 56, 56, 56) sts. Work in K1, P1 Ribbing for 6 rows. Switch to larger ndl.

**Dec row (RS):** K2, [k2tog, k3] 7 (10) times, k2tog, k2 – 8 sts dec'd, 33 sts rem. Purl a WS row. Work Rows 1-2 of Arrows cChart.

**Inc row (RS):** K1, m1, work in patt to last st, m1, k1 – 2 sts inc'd. Maintaining sts in Arrows patt, rep Inc row every 4 (4, 6, 6, 4) rows, 3 (7, 1, 7, 1) time(s), then rep Inc row every 6 (6, 8, 8, 6) rows, 2 (1, 4, 1, 10) time(s) – 45 (51, 57, 63, 69) sts. At the same time, after Row 20 of chart is finished

switch to St st and follow Rows 1-6 of Stripe.

After Stripe is complete, cont in C only and St st.

After all inc's are complete, work even with C until Sleeve meas 5½ (6½, 7½, 8½, 10)" from cast-on edge. Bind off 2 (3, 3, 4, 4) sts at beg of next 2 rows – 41 (45, 51, 55, 61) sts rem. Place sts on holder.

## Body

With A and smaller ndl, cast on 147 (161, 177, 191, 207) sts. Work in K1, P1 Ribbing for 1".

Switch to larger ndl.

### **Newborn Size Only:**

**Dec row (RS):** K1, k2tog, k2, [k2tog, k3] 27 times, k2tog, k2, k2tog, k1 – 30 sts dec'd, 117 sts rem.

### **6 Month Size Only:**

**Dec row (RS):** K2, [k2tog, k3] 15 times, k2tog, k4, [k2tog, k3] 15 times, k2tog, k1 – 32 sts dec'd, 129 sts rem.

### **12 Month Size Only:**

**Dec row (RS):** K1, k2tog, k2, [k2tog, k3] 33 times, k2tog, k2, k2tog, k1 – 36 sts dec'd, 141 sts rem.

### **2 Year Size Only:**

**Dec row (RS):** K2, [k2tog, k3] 18 times, k2tog, k4, [k2tog, k3] 18 times, k2tog, k1 – 38 sts dec'd, 153 sts rem.

### **4 Year Size Only:**

**Dec row (RS):** K1, k2tog, k2, [k2tog, k3] 39 times, k2tog, k2, k2tog, k1 – 42 sts dec'd, 165 sts rem.

### **All Sizes:**

Purl a WS row. Work Rows 1-20 of Arrows chart. After Row 20 of chart is finished switch to St st and follow Rows 1-6 of Stripe. After Stripe is complete, cont in C only and St st until piece meas 5½ (6½, 7½, 8½, 10)" from cast-on edge, ending with RS row.

**Next row (WS):** P25 (27, 30, 32, 35), bind off 4 (6, 6, 8, 8)sts for underarm, p59 (63, 69, 73, 79), bind off 4 (6, 6, 8, 8) sts for underarm, p25 (27, 30, 32, 35).

*Knit. Relax. Smile. Repeat!*

2017 © Universal Yarn, Inc.

All rights reserved.

www.universalyarn.com

This pattern may not be reproduced for business, trade or sale.

### Join Body and Sleeves

**Row 1 (RS):** K25 (27, 30, 32, 35) Right Front sts, pm, knit across 41 (45, 51, 55, 61) Sleeve sts, pm, k59 (63, 69, 73, 79) Back sts, pm, knit across 41 (45, 51, 55, 61) Sleeve sts, pm, k25 (27, 30, 32, 35). – 191 (207, 231, 247, 271) sts. Purl a WS row.

### Raglan Shaping

**Dec row (RS):** Knit to 3 sts bef m, k2tog, k1, sl m, k1, ssk; rep from \* 3 more times, knit to end – 8 sts dec'd, 183 (199, 223, 239, 263) sts rem. Rep Dec row every RS row, 12 (14, 16, 18, 20) more times – 104 (120, 136, 152, 168) sts dec'd, 87 (87, 95, 95, 103) sts rem; 33 (33, 35, 35, 37) Back sts, 15 (15, 17, 17, 19) sts each Sleeve, 12 (12, 13, 13, 14) sts each Front.

### Shape Front Neck, Continue Raglan Shaping

While continuing to work a Dec row every RS row 3 more times, Bind off 5 (5, 6, 6, 7) sts at beg of next 2 rows and 2 sts at beg of next 4 rows. Bind off rem sts.

### FINISHING

Block piece to finished measurements. Sew Sleeve and underarm seam.

### Neck Edging

With smaller ndl, RS facing, and A, pick up and knit 75 (75, 83, 83, 91) sts evenly along Neck Edge. Work in K1, P1 Ribbing for 4 rows. Bind off sts in patt over the next WS row.

### Buttonhole Band

With smaller ndl, RS facing, and A, pick up and knit 71 (83, 97, 109, 123) sts along Left Front. Work in K1, P1 Ribbing for 1 row.

**Next row (RS):** Work in est'd rib over 3 sts, {[yo] 2 times, work in patt over 13 sts}, 5 (6, 7, 8, 9) times, yo, work in patt over rem 3 (2, 3, 2, 3) sts – 6 (7, 8, 9, 10) buttonholes.

**Next row (WS):** Work in patt over 2 (1, 2, 1, 2) st(s), {[k2tog or p2tog] 2 times (working tog each separate yo with surrounding st)}, work in patt over next 11 sts} 5 (6, 7, 8, 9) times, [k2tog or p2tog] 2 times, work in patt to end. Work in K1, P1 Ribbing for 1 more row. Bind off all sts in patt over next WS row.

### Buttonband

With smaller ndl, RS facing, and A, pick up and knit 71 (83, 97, 109, 123) sts along Right Front. Work in K1, P1 Ribbing for 4 rows. Bind off all sts in patt over next WS row.

Sew buttons to Buttonband opposite buttonholes. Weave in ends.

### Abbreviations

<b>beg</b>	begin(ning)
<b>circ</b>	circular
<b>cont</b>	continue
<b>dec('d)</b>	decrease(d)
<b>est'd</b>	established
<b>inc('d)</b>	increase(d)
<b>k</b>	knit
<b>k2tog</b>	knit 2 stitches together (1 st dec'd)
<b>LH</b>	left hand
<b>m</b>	marker
<b>meas</b>	measures
<b>ndl</b>	needle
<b>patt</b>	pattern
<b>p</b>	purl
<b>p2tog</b>	purl 2 sts together (1 st dec'd)
<b>pm</b>	place marker
<b>rem</b>	remain(ing)
<b>rep</b>	repeat
<b>RS</b>	right side
<b>ssk</b>	slip next 2 sts individually knitwise, slip them back to left needle in this position, knit them together through the back loops (1 st dec'd)
<b>st(s)</b>	stitch(es)
<b>tog</b>	together
<b>WS</b>	wrong side
<b>yo</b>	yarn over

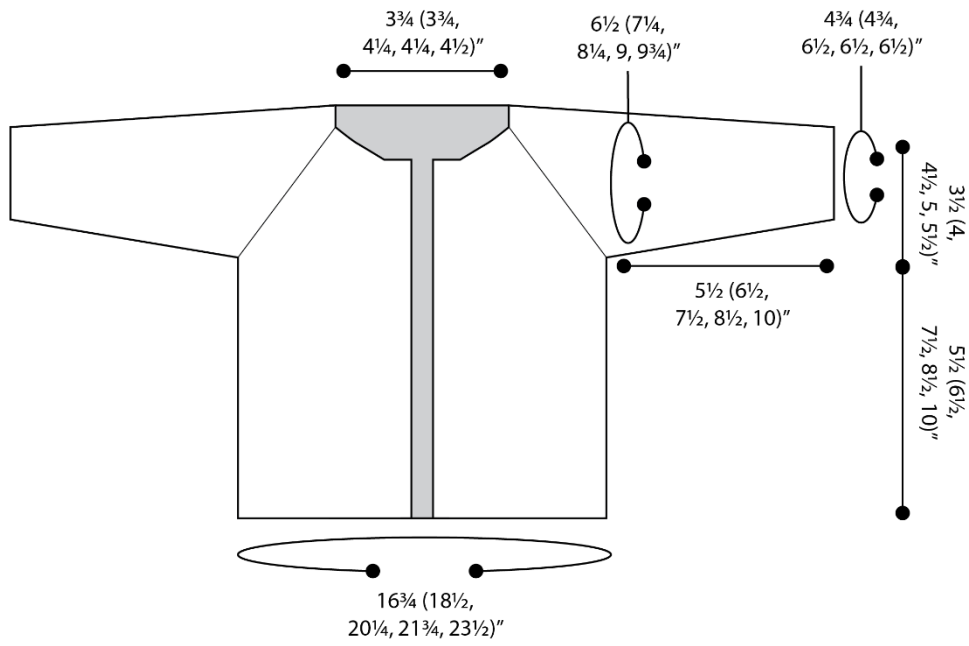
*Knit. Relax. Smile. Repeat!*

2017 © Universal Yarn, Inc.

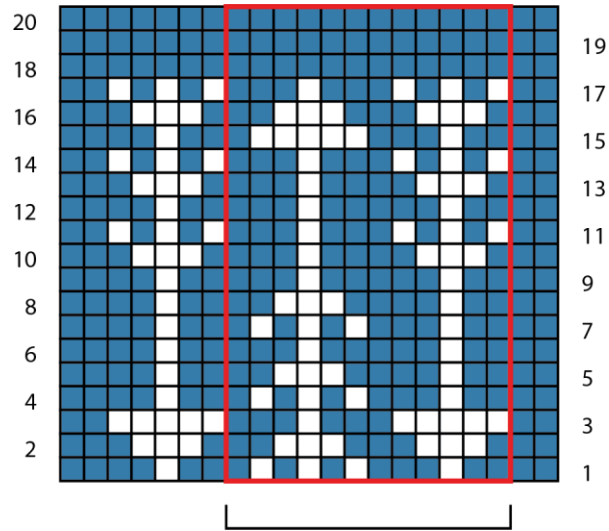
All rights reserved.

[www.universalyarn.com](http://www.universalyarn.com)

This pattern may not be reproduced for business, trade or sale.



Arrows



multiple of  
12 sts + 9

Key

- A - knit on RS, purl on WS
- B - knit on RS, purl on WS
- pattern repeat

*Knit. Relax. Smile. Repeat!*

2017 © Universal Yarn, Inc.

All rights reserved.

[www.universalyarn.com](http://www.universalyarn.com)

This pattern may not be reproduced for business, trade or sale.