



Pattern Collection: Accessories



Vinia Hat

Designed by Rachel Brockman

SIZES

Toddler (Child, Adult Small/Medium, Adult Medium/Large)

Shown in Adult Small/Medium size.

FINISHED MEASUREMENTS

Brim Circumference: 14 (16, 18, 20)"

Length (with Brim unfolded): 8¾ (9, 10¼, 10½)"

MATERIALS

Fibra Natura Donnina (100% superfine merino wool, 50g/180 yds)

- 224 Navy (MC) – 1 skein (all sizes)
- 205 Coral Brandy (CC) – 1 skein (all sizes)

Needles: US Size 4 (3.5 mm) 16" circular and set of dpns or your preferred needle for knitting small circumferences *or size needed to obtain gauge*

US Size 3 (3.25 mm) 16" circular

Notions: Tapestry needle, stitch markers, 2" pom pom maker

GAUGE

28 sts x 30 rnds = 4" in Vine patt with larger ndl

Save time check your gauge.

Knit. Relax. Smile. Repeat!

2019 © Universal Yarn, Inc.

All rights reserved.

www.universalyarn.com

This pattern may not be reproduced for business, trade or sale.

For questions about this pattern, please contact patterns@universalyarn.com.

PATTERN NOTES

Everyone needs a gorgeous winter hat that can be dressed up or down to fit the needs of the day. The Vinia Hat, worked in our super-soft Donnina, is sure to fit the bill. A stunning colorwork vine pattern adds dimension and depth to this toboggan-style hat, and a perfect pom pom on top in the contrast color is just the right amount of fun you need for this design.

This hat is worked in the round from the bottom up. It is topped with a contrast color pom pom.

STITCH GUIDE

K1, P1 Rib

(Even number of sts)

Rnd 1: * K1, p1; rep from * to end.

Rep Rnd 1 for patt.

HAT

Brim

With smaller ndl and MC, cast on 98 (112, 126, 140) sts. PM and join to knit in the rnd, being careful not to twist.

Work in K1, P1 Rib until piece meas 3¾ (4, 4¼, 4½)" from cast-on edge. Change to larger circ ndl.

Hat Body

Note 1: Join CC as indicated on chart.

Note 2: You may wish to place markers between each pattern repeat to help you stay on track.

Rnd 1: Work Rnd 1 of Vine patt to end. Patt will be repeated 7 (8, 9, 10) times across each rnd.

Rnd 2: Work Rnd 2 of Vine patt to end.

Cont as est'd through Rnd 8 of Vine patt, then rep Rnds 1-8 of patt 2 (2, 3, 3) more times, then rep Rnds 1-4 of patt, 1 more time.

Shape Crown

Note: Change to dpns when there are too few stitches to fit comfortable on circular ndl.

Rnd 1: Work Rnd 1 of Crown Shaping patt to end – 14 (16, 18, 20) sts dec'd, 84 (96, 108, 120) sts rem. Patt will be repeated 7 (8, 9, 10) times across each rnd.

Cont as est'd through Rnd 17 of Crown Shaping patt – 77 (88, 99, 110) sts dec'd, 7 (8, 9, 10) sts rem. Break yarn leaving approx. 8" tail. Thread tail through rem live sts. Pull taut to close.

FINISHING

Gently wash and block to finished measurements. Weave in ends. With CC, make a 2" pom pom. Secure to top of hat.

Abbreviations

approx	approximately
circ	circular
cont	continue
dec('d)	decrease(d)
dpn(s)	double pointed needle(s)
est'd	established
k	knit
m	marker
ndl	needle
p	purl
patt	pattern
pm	place marker
rem	remain(ing)
rep	repeat
rnd	round
S2KP2	slip 2 stitches as if to knit 2 together, knit 1, pass 2 slipped stitches over knit stitch; centered double decreases
ssk	slip next 2 sts individually knitwise, slip them back to left needle in this position, knit them together through the back loops (1 st dec'd)
st(s)	stitch(es)

Knit. Relax. Smile. Repeat!

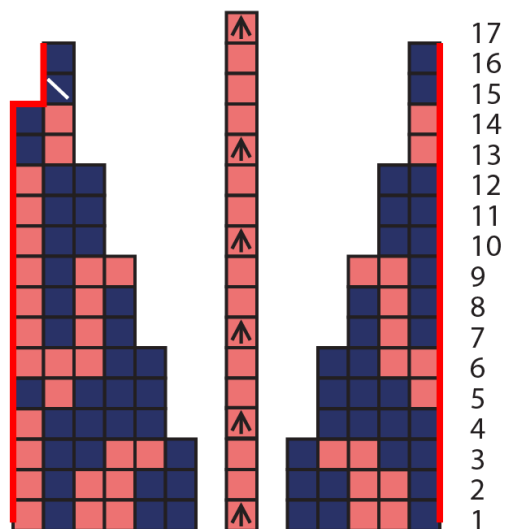
2019 © Universal Yarn, Inc.

All rights reserved.

www.universalyarn.com

This pattern may not be reproduced for business, trade or sale.

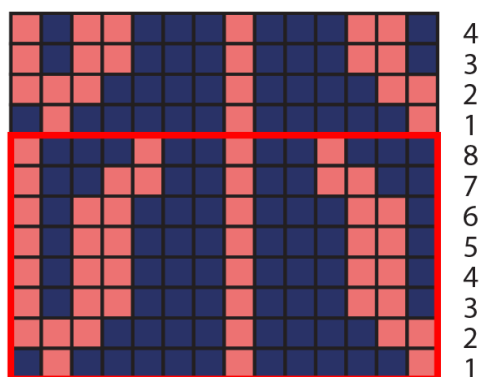
Crown Shaping



Key

- pattern repeat
- with MC, knit
- with CC, knit
- ↑ with CC, S2KP2
- / with MC, ssk

Vine



Knit. Relax. Smile. Repeat!

2019 © Universal Yarn, Inc.

All rights reserved.

www.universalyarn.com

This pattern may not be reproduced for business, trade or sale.