



Pattern Collection: Accessories



Topiary Scarf

Designed by Universal Yarn Design Team

FINISHED MEASUREMENTS

Length: 80"

Width: 9½"

MATERIALS

Rozetti Yarns Merino Mist (60% viscose, 20% acrylic, 20% superwash fine merino; 50g/167 yds)

- 107 Grass – 4 balls

Needles: US Size 8 (5 mm) straight or your preferred needle for working flat *or size needed to obtain gauge*

Notions: Tapestry needle, stitch markers

GAUGE

19 sts x 24 rows = 4" in Dual Diamonds patt

Save time check your gauge.

Knit. Relax. Smile. Repeat!

2019 © Universal Yarn, Inc.

All rights reserved.

www.universalyarn.com

This pattern may not be reproduced for business, trade or sale.

PATTERN NOTES

Lovely lace diamonds and the soft glimmer of Merino Mist come together to create an elegant scarf. The Topiary scarf features a tidy slipped stitch edge and a lace pattern framed by twisted ribbing. It is knit flat in one piece, beginning with the lower edge.

STITCH GUIDE

K1, P1 Twisted Rib

(odd number of sts)

Row 1 (RS): * K1 tbl, p1; rep from * to last st, k1 tbl.

Row 2 (WS): P1 tbl, * k1, p1 tbl; rep from * to end.

Rep Rows 1-2 for patt.

Dual Diamonds

(multiple of 12 sts, plus 11)

Row 1 (RS): P5, * yo, ssp, p10; rep from * to last 6 sts, yo, ssp, p4.

Row 2 (WS): k5, p1, * k11, p1; rep from * to last 5 sts, k5.

Row 3: P3, p2tog, yo, * k1, yo, ssp, p7, p2tog, yo; rep from * to last 6 sts, k1, yo, ssp, p3.

Row 4: Rep Row 2.

Row 5: P2, p2tog, yo, p1, * k1, p1, yo, ssp, p5, p2tog, yo, p1; rep from * to last 6 sts, k1, p1, yo, ssp, p2.

Row 6: K3, p1, k1, p1, * k1, p1, k7, p1, k1, p1; rep from * to last 5 sts, k1, p1, k3.

Row 7: K1, p2tog, yo, k1, p1, * k1, p1, k1, yo, ssp, p3, p2tog, yo, k1, p1; rep from * to last 6 sts, k1, p1, k1, yo, ssp, p1.

Row 8: Rep Row 6.

Row 9: P2tog, yo, p1, k1, p1, * [k1, p1] 2 times, yo, ssp, p1, p2tog, yo, p1, k1, p1; rep from * to last 6 sts, [k1, p1] 2 times, yo, ssp.

Row 10: [K1, p1] 3 times, * [k1, p1] 2 times, k3, [p1, k1] 2 times, p1; rep from * to last 5 sts, [k1, p1] 2 times, k1.

Row 11: [P1, k1] 2 times, p1, * [k1, p1] 2 times, k1, yo, p3tog, yo, [k1, p1] 2 times; rep from * to last 6 sts, [k1, p1] 3 times.

Row 12: Rep Row 10.

Row 13: P5, * p6, yo, ssp, p4; rep from * to last 6 sts, p6.

Row 14: K6, * k5, p1, k6; rep from * to last 5 sts, k5.

Row 15: Yo, ssp, p3, * p4, p2tog, yo, k1, yo, ssp, p3; rep from * to last 6 sts, p4, p2tog, yo.

Row 16: Rep Row 14.

Row 17: P1, yo, ssp, p2, * p3, p2tog, yo, p1, k1, p1, yo, ssp, p2; rep from * to last 6 sts, p3, p2tog, yo, p1.

Row 18: K1, p1, k4, * k3, [p1, k1] 2 times, p1, k4; rep from * to last 5 sts, k3, p1, k1.

Row 19: P1, k1, yo, ssp, p1, * p2, p2tog, yo, [k1, p1] 2 times, k1, yo, ssp, p1; rep from * to last 6 sts, p2, p2tog, yo, k1, p1.

Row 20: Rep Row 18.

Row 21: P1, k1, p1, yo, ssp, * p1, p2tog, yo, [p1, k1] 3 times, p1, yo, ssp; rep from * to last 6 sts, p1, p2tog, yo, p1, k1, p1.

Row 22: [K1, p1] 2 times, k2, * [k1, p1] 5 times, k2; rep from * to last 5 sts, [k1, p1] 2 times, k1.

Row 23: [P1, k1] 2 times, yo, p3tog, yo, * [k1, p1] 4 times, k1, yo, p3tog, yo; rep from * to last 4 sts, [k1, p1] 2 times.

Row 24: Knit to end.

Rep Rows 1-24 for patt.

SCARF

Cast on 45 sts.

Lower Edge

Row 1 (RS): Sl 1 pwise wyif, work Row 1 of K1, P1 Twisted Rib to last st, k1.

Row 2 (WS): Sl 1 pwise wyif, work Row 2 of K1, P1 Twisted Rib to last st, p1.

Rows 3-6: Rep Rows 1-2, 2 times.

Establish Pattern

Note: This section is also charted for your convenience.

Row 1 (RS): Sl 1 pwise wyif, cont as est'd over 4 sts, pm, work Row 1 of Dual Diamonds patt to last 5 sts, pm, cont as est'd to end.

Row 2 (WS): Sl 1 pwise wyif, cont as est'd to m, sl m, work Row 2 of Dual Diamonds patt to m, sl m, cont as est'd to end.

Rows 1-2 set patt. Cont as est'd through Row 24 of Dual Diamonds patt, then rep Rows 1-24 of Dual Diamonds patt, 15 more times. Work Rows 1-12 of patt, 1 more time.

Knit. Relax. Smile. Repeat!

2019 © Universal Yarn, Inc.

All rights reserved.

www.universalyarn.com

This pattern may not be reproduced for business, trade or sale.

Upper Edge

Row 1 (RS): Sl 1 pwise wyif, work Row 1 of K1, P1 Twisted Rib to last st, k1.

Row 2 (WS): Sl 1 pwise wyif, work Row 2 of K1, P1 Twisted Rib to last st, p1.

Rows 3-6: Rep Rows 1-2, 2 times.

FINISHING

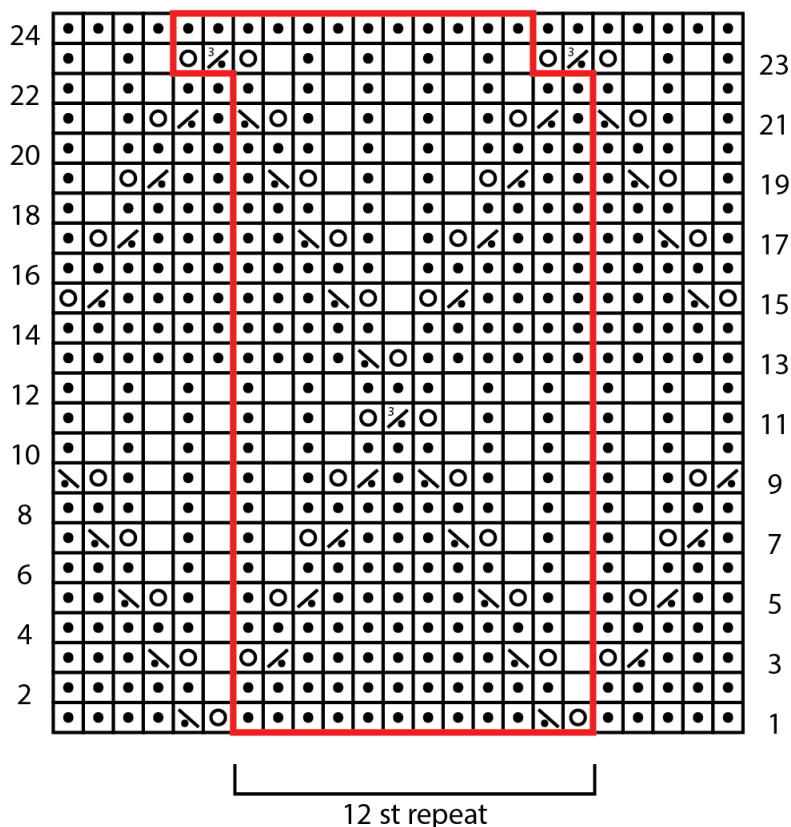
Weave in ends but do not trim. Wet or steam block, stretching to enhance lace. Once piece is fully dry, trim ends close to work.

Abbreviations

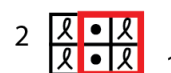
cont	continue	tbl	through back loop
est'd	established	WS	wrong side
k	knit	wyif	with yarn held in front
m	marker	yo	yarn over
p	purl		
p2tog	purl 2 sts together (1 st dec'd)		

p3tog	purl 3 sts together (2 sts dec'd)	
patt	pattern	
pm	place marker	
pwise	purlwise	
rep	repeat	
RS	right side	
sl	slip	
ssp	slip next 2 sts individually knitwise, slip them back to left needle in this position, purl them together through the back loops (1 st dec'd)	
	tbl	through back loop
	WS	wrong side
	wyif	with yarn held in front
	yo	yarn over

Dual Diamonds



K1, P1 Twisted Rib



Key

- pattern repeat
- tbl k1 tbl on RS, p1 tbl on WS
- purl on WS, knit on RS
- knit on RS, purl on WS
- yo
- \ ssp
- / p2tog
- 3/ p3tog

Knit. Relax. Smile. Repeat!

2019 © Universal Yarn, Inc.

All rights reserved.

www.universalyarn.com

This pattern may not be reproduced for business, trade or sale.