



Triangle Fusion Blanket

FINISHED MEASUREMENTS**Width:** 41"**Length:** 52½"**MATERIALS**

Premier® Yarns Sweet Roll™ (100% Acrylic;
5oz/140g, 245yds/224m)

- A: 1047-05 Raspberry Swirl – 7 balls
- B: 1047-10 Black Pepper Swirl – 3 balls

Hook: US Size I-9 (5.5 mm) *or size needed to obtain gauge*

Notions: Tapestry needle

GAUGE

15 sc x 12 rows = 4"

Save time, check your gauge.

Skills/techniques used in this pattern:

- Chain, single, double and half double crochet stitches.
- Reading a color chart.
- Changing colors.
- Working in joined rounds.

PATTERN NOTES

To change yarn color, work last stitch of old color to last yarn over. Yarn over with new color and draw through all loops on hook to complete the stitch. When working on right side of blanket, carry unused yarn color in back and when working on wrong side of Blanket, carry the unused yarn color in front to keep the unused strand to the wrong side at all times. When working from chart, read odd-numbered rows from right to left and even-numbered rows from left to right.

BLANKET

With A, ch 153.

Row 1 (RS): Sc in 2nd ch from hk and in each st across, turn – 152 sc. Counts as Row 1 of Chart.

Row 2: Following color changes for Row 2 in Chart, ch 1, sc in each st across, turn. Pattern will be repeated 8 times across each row.

Rows 3-220: Work Rows 3-10 of Chart, then work Rows 1-10 of Chart, 21 times.

Row 221: Ch 1, sc in each st across, do not turn. Fasten off A, join B.

Border

Rnd 1 (RS): Ch 1, work sc evenly spaced along the side edge; working along opposite side of foundation ch, work 3 sc in ch at base, sc evenly across, 3 sc in last ch at base, work sc evenly spaced across next side edge, work 3 sc in first st of Row 221, sc evenly across, 3 sc in last st, join with sl st to beg sc.

Rnd 2: Ch 3 (counts as dc), dc in each st around, working 3 dc in 2nd sc in each 3-sc corner, join with sl st to beg ch-3.

Rnd 3: Ch 1, hdc in each st around, working 3 hdc in 2nd dc in each 3-dc corner, join with sl st to first hdc. Fasten off.

FINISHING

Weave in ends.

Triangle Fusion Blanket

By Premier® Yarns Design Team

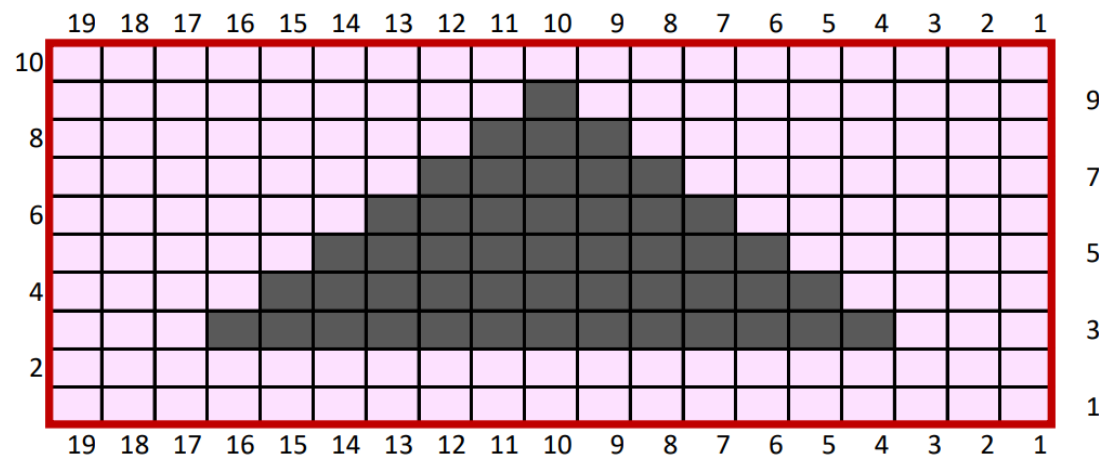
project continued

Abbreviations

- beg** begin(ning)
- ch** chain
- dc** double crochet
- hdc** half double crochet
- hk** hook
- rep** repeat
- rnd(s)** round(s)
- RS** right side
- sc** single crochet
- sp(s)** space(es)
- st(s)** stitch(es)
- sl st** slip stitch



Chart



- A
- Repeat
- B