



FINISHED MEASUREMENTS

Length: 44"

Width: 40"

MATERIALS

Premier® Yarns Anti-Pilling® Everyday®
Worsted (100% Anti-Pilling Acrylic;
 3.5 oz/100 g, 180 yds/165m)

- 100-51 Spa – 7 skeins

Needle: US Size 7 (4.5 mm) 36" circular knitting
 needles *or size needed to obtain gauge*

Notions: Tapestry needle, 2 stitch markers

GAUGE

18 sts x 26 rows = 4" in lace pattern

Save time, check your gauge.

STITCH GUIDE (multiple of 12 sts plus 11)

Row 1 (RS): K5, k2tog, k4, yo, *k1, yo, k4, s2kp,
 k4, yo; rep from * to last 12 sts, k1, yo, k4, skp,
 k5.

Row 2, 4, 6, 8, 10 (WS): K5, purl to last 5 sts,
 k5.

Row 3: K5, k2tog, k3, yo, k1, *k2, yo, k3, s2kp,
 k3, yo, k1; rep from * to last 12 sts, k2, yo, k3,
 skp, k5.

Row 5: K5, k2tog, k2, yo, k2, *k3, yo, k2, s2kp,
 k2, yo, k2; rep from * to last 12 sts, k3, yo, k2,
 skp, k5.

Row 7: K5, k2tog, k1, yo, k1, yo, skp, *k1,
 k2tog, yo, k1, yo, k1, s2kp, k1, yo, k1, yo, skp;
 rep from * to last 12 sts, k1, k2tog, yo, k1, yo,
 k1, skp, k5.

Row 9: K5, k2tog, yo, k3, yo, *s2kp, yo, k3, yo,
 s2kp, yo, k3, yo; rep from * to last 13 sts, s2kp,
 yo, k3, yo, skp, k5.

Rep Rows 1-10 for pattern.

BLANKET

Cast on 155 sts.

Knit 10 rows.

Rep Rows 1-10 of Stitch Pattern until blanket
 measures approximately 43", ending with a WS
 row.

Knit 10 rows.

Bind off loosely.

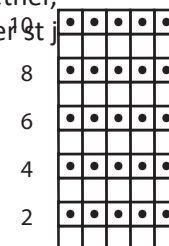
FINISHING

Weave in ends.

Block lightly.

Abbreviations

k	knit
k2tog	knit 2 stitches together - 1 st decreased
RS	right side
rep	repeat
skp	slip 1, knit 1, pass slipped stitch over - 1 st decreased
s2kp	slip 2 sts as if to knit them together, knit 1, pass slipped stitches over 1 st knit – 2 sts decreased
sl	slip
st(s)	stitch(es)
WS	wrong side
yo	yarn over



Key

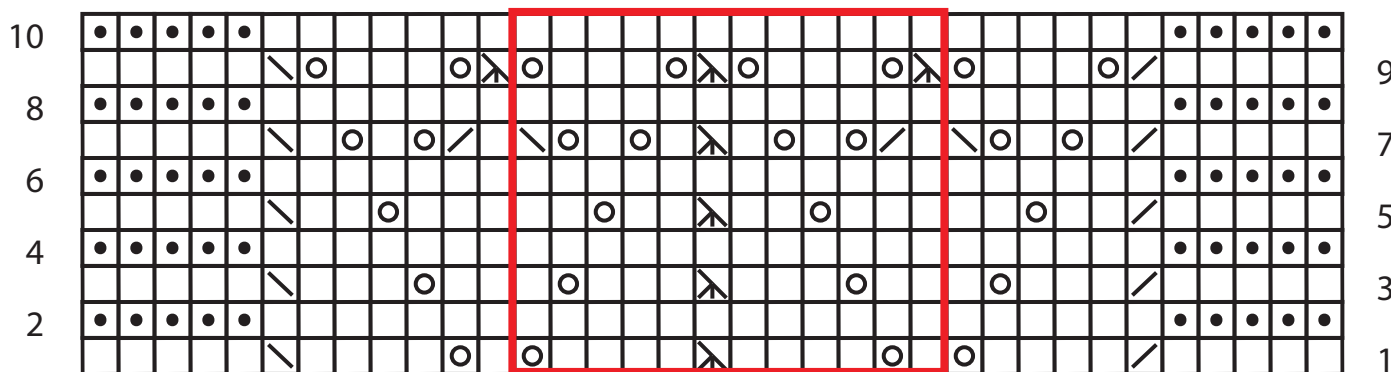
- knit or
- purl or
- k2tog
- skp
- yo
- sk2p
- pattern

Sweet Medallions Blanket

Level: Intermediate

Sweet Medallions Blanket

Continued



Key

- knit on RS, purl on WS
- purl on RS, knit on WS
- k2tog
- skp
- yo
- sk2p
- pattern repeat

12-st repeat