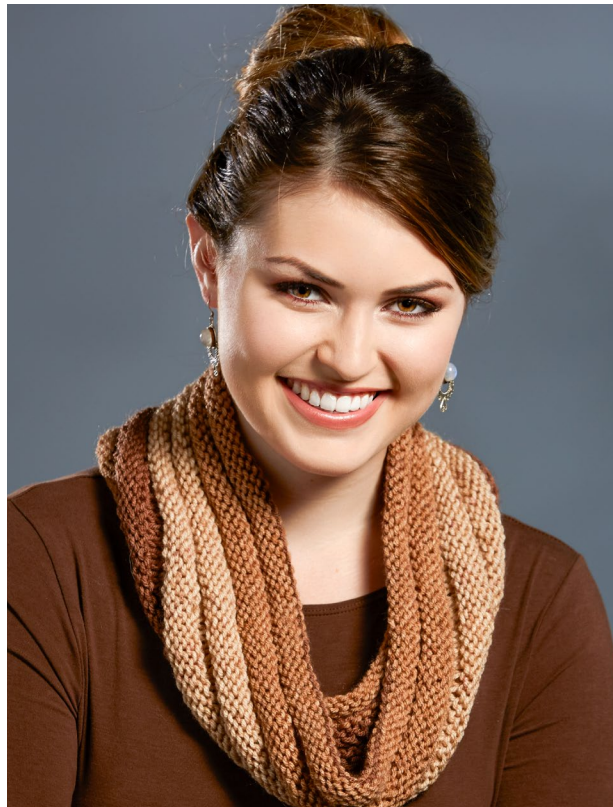


## Tiramisu Cowl

By Premier Yarns Design Team

Level: Intermediate



### FINISHED MEASUREMENTS

**Circumference:** 28"

**Length:** 10"

### MATERIALS

**Premier® Yarns Sweet Roll** (100% Acrylic;  
140gm/245 yds)

- #1047-06 Caramel Swirl – 1 ball

**Needles:** US Size 10 (6 mm) circular needle 24"  
long *or size needed to obtain gauge.*

**Notions:** Tapestry needle, stitch marker

### GAUGE

14 sts x 16 rows = 4" in Stockinette St

**Save time, check your gauge.**

### COWL

Cast on 98 sts. Place marker and join to work in the round, being careful not to twist.

**Rnds 1-6:** Purl.

**Rnds 7-10:** Knit.

Repeat Rnds 1-10 until piece measures approx 10", ending with Rnd 6.

Bind off loosely.

### Abbreviations

**rnd(s)** round(s)

**st(s)** stitch(es)

**WS** Wrong Side