



Intarsia Crochet Patches

FINISHED MEASUREMENTS

Width: 4½"

Length: 4½"

MATERIALS

Premier® Yarns Stitch Please™ Superwash Extra Fine Merino (100% Merino Wool; 1.75 oz/50g, 126yds/115m)

- C1: 2117-01 Winter White – 1 ball
- C2: 2117-31 Black – 1 ball
- C3: 2117-02 Marigold – 1 ball
- C4: 2117-14 Peony – 1 ball
- C5: 2117-10 Ballet Pink – 1 ball
- C6: 2117-07 Strawberry – 1 ball
- C7: 2117-26 Emerald – 1 ball
- C8: 2117-04 Clementine – 1 ball
- C9: 2117-23 Blueberry Pie – 1 ball
- C10: 2117-36 Pearl Gray – 1 ball
- C11: 2117-06 Grapefruit – 1 ball
- C12: 2117-33 Ice Blue – 1 ball

Hook: US Size F-5 (3.75 mm) *or size needed to obtain gauge*

Notions: Tapestry needle

GAUGE

19 sc x 19 rows = 4"

Save time, check your gauge.

Skills/techniques used in this pattern:

- Chain and single crochet stitches.
- Changing colors using the intarsia crochet technique.

PATTERN NOTES

Each patch is worked using the intarsia crochet technique and following the color chart for color placement. To crochet using the intarsia technique, wind small bobbins of colors to

be used for each separate area of color in the chart, changing colors according to the chart. To change color, work to last yarn over, pick up new color and pull through to complete stitch, drop the unused color attached to the bobbin to the wrong side of your work. Bobbins of yarn colors waiting to be used should always hang on the same side of your work (the wrong side.) It is acceptable to mix in small sections of tapestry crochet technique by working a few stitches over un-used color strands where it makes more sense to do than to add a new color bobbin, (usually when stitches just above the same color). Be careful to keep all floats and/or un-used color strands on the wrong side of your work. Follow the color chart from bottom up, right to left on right side rows and from left to right on wrong side rows.

PATCHES

Following the first color chart, ch 22.

Row 1 (RS): Sc in 2nd ch from hook and in each ch across, turn – 21 sc.

Beg with Row 2 of chart, work in single crochet and change yarn color following the chart, until all 21 rows of the chart have been completed. Fasten off.

FINISHING

Weave in all ends, rep for each color chart.

Abbreviations

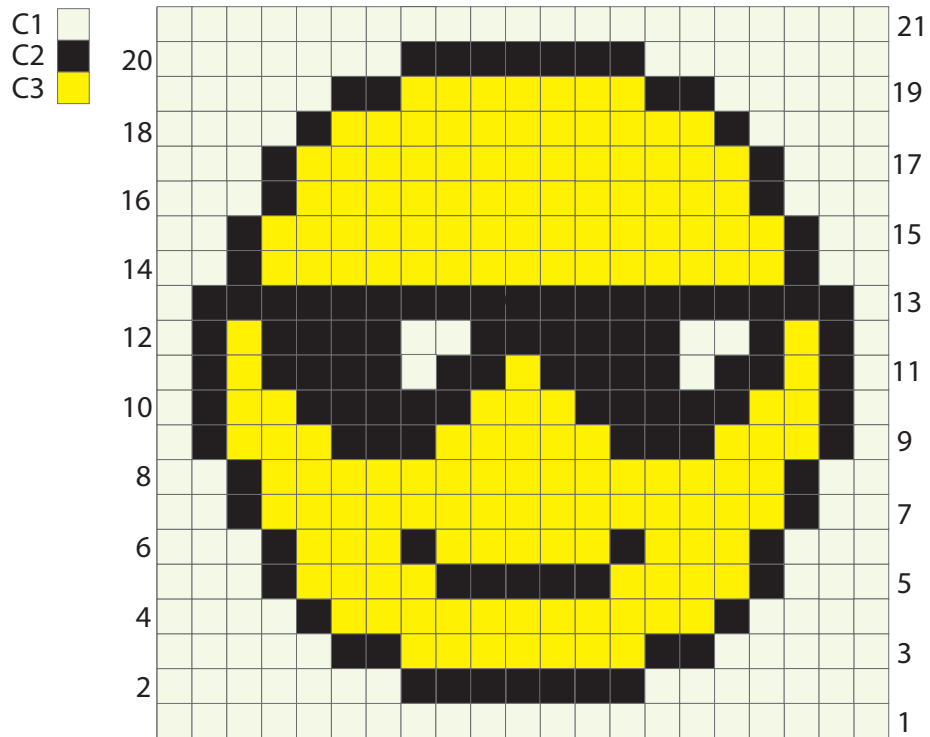
beg	begin(ning)
ch	chain
rep	repeat(ing)
RS	right side
sc	single crochet
st(s)	stitch(es)

Intarsia Crochet Patches

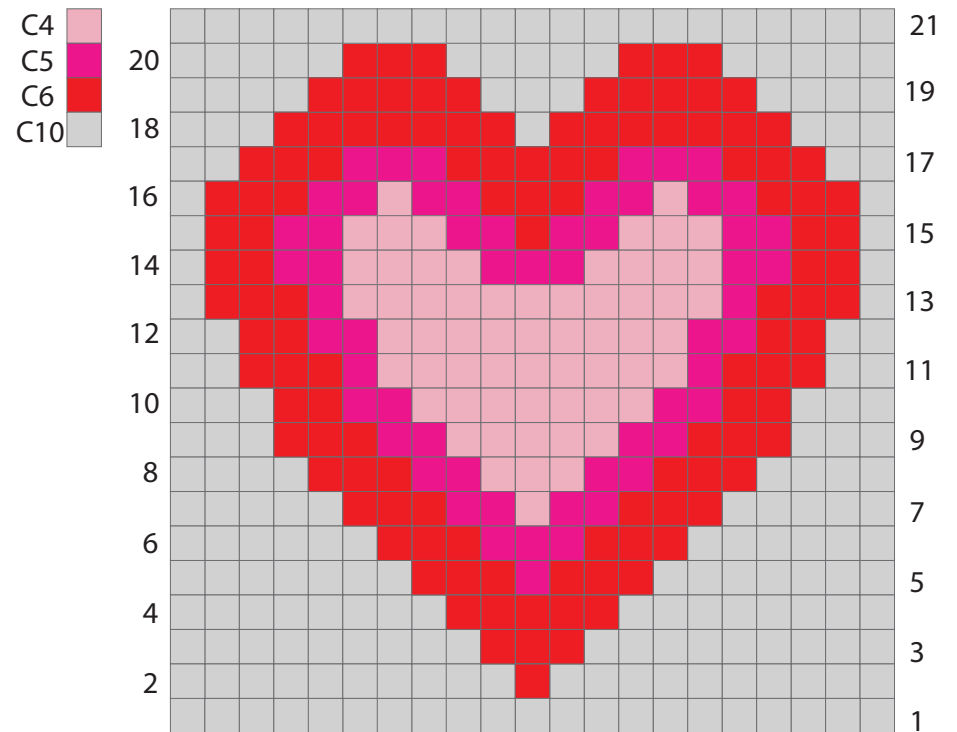
By Liz Salazar for Premier® Yarns

project continued

Sunglass Emoji color chart



Heart color chart

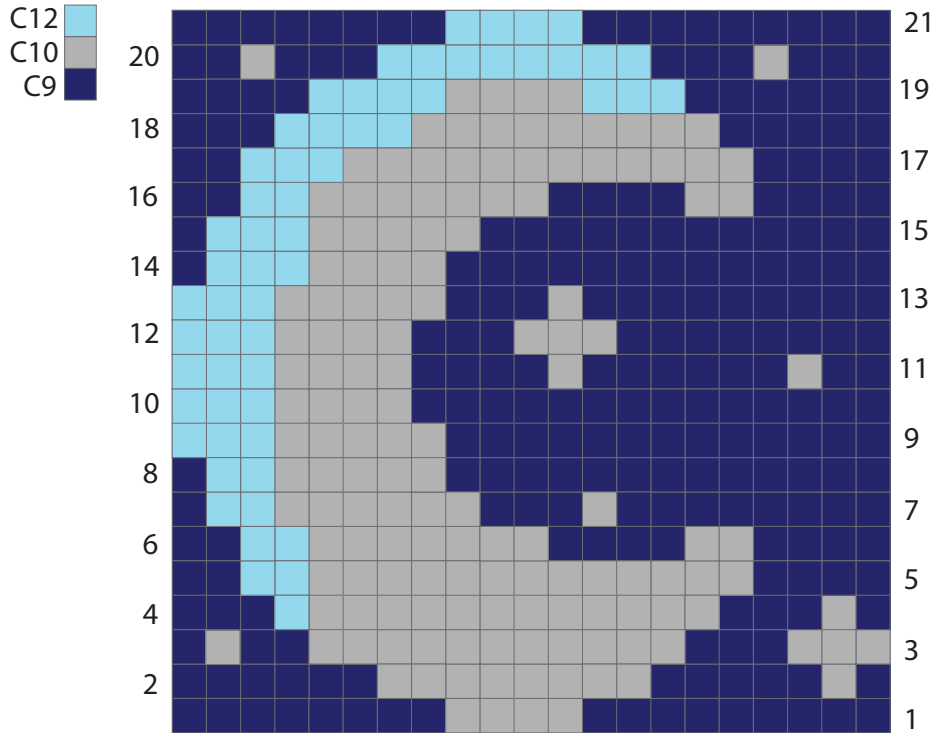


Intarsia Crochet Patches

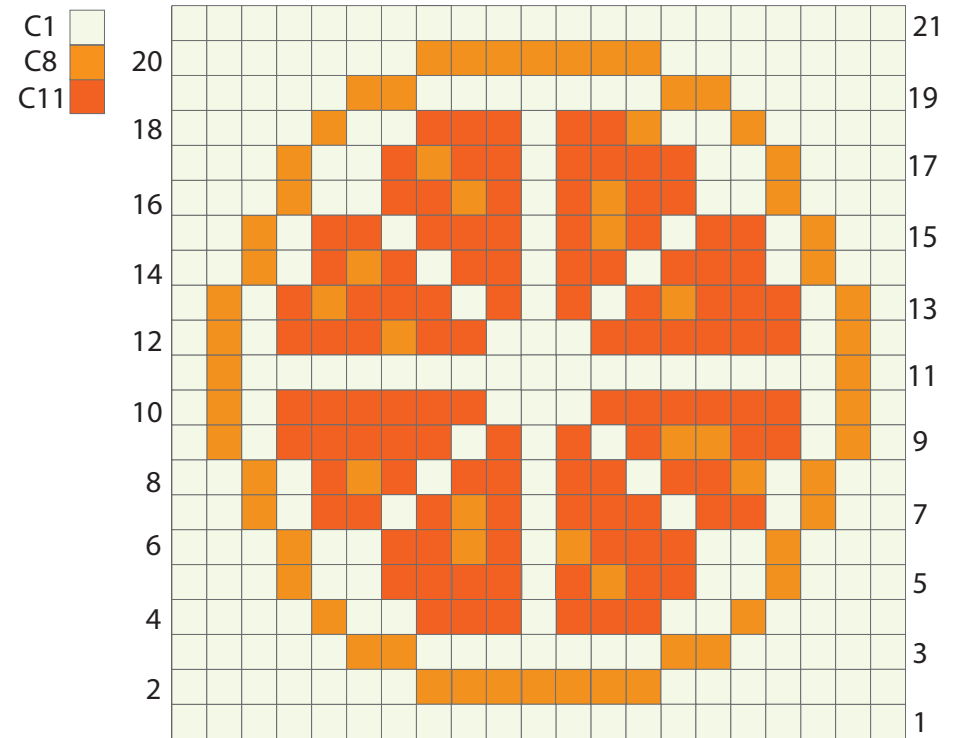
By Liz Salazar for Premier® Yarns

project continued

Moonlight color chart



Grapefruit color chart

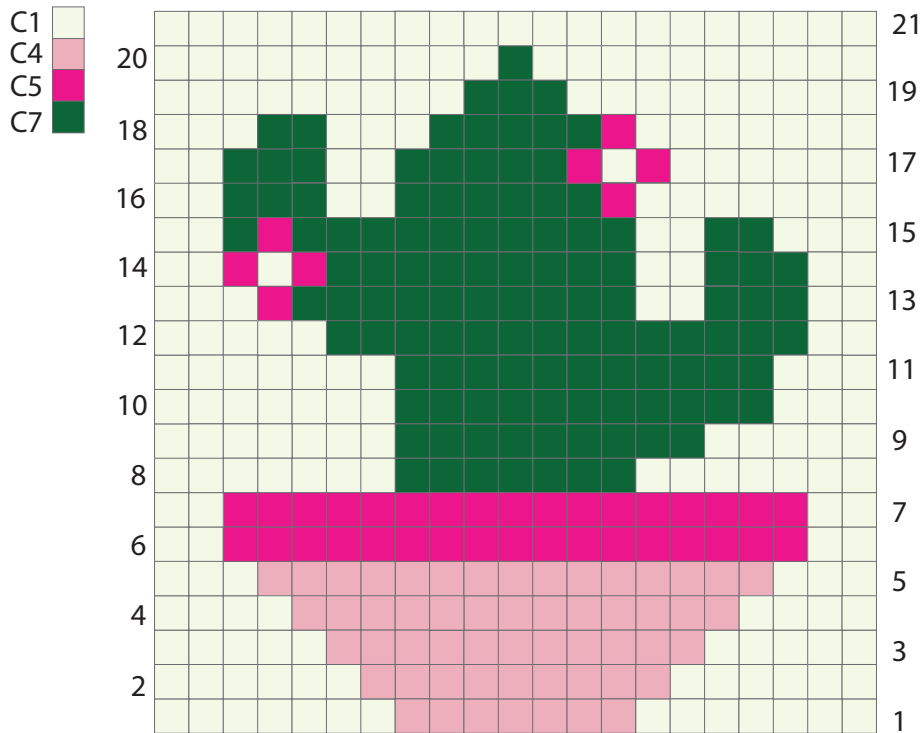


Intarsia Crochet Patches

By Liz Salazar for Premier® Yarns

project continued

Succulent color chart



Peace color chart

