

Stitch Please™



Waving Lace Wrap

Type : Knit

Level : Intermediate

By Stitch Please™ Design

Waving Lace Wrap

Materials

Premier® Yarns *Stitch Please™ Chunky* (100% Wool; 3.5oz/100g, 120yds/110m)
• 1135-44 Throwin Shade – 3 skeins

Needles

US Size 11 (8 mm) straight needles, *or size needed to obtain gauge*

Notions

Tapestry Needle

US Size L-11 (8 mm) crochet hook (optional for attaching fringe)

Sizes

One Size

Finished Measurements

Length: 60"

Width: 15"

Gauge

12 sts x 16 rows = 4" in Waving Lace

Save time, check your gauge.

Pattern Notes

This Wrap is worked flat from end to end.

Pattern Stitch Guide

Waving Lace (*multiple of 9 sts, charted on next page*)

Row 1 (RS): Knit.

Row 2 (WS): Purl.

Row 3: *Yo, ssk, k5, k2tog, yo; rep from * to end.

Row 4: Purl, working [k1, p1] into double yo.

Row 5: *K1, yo, ssk, k3, k2tog, yo, k1; rep from * to end.

WS Rows 6-10: Purl.

Row 7: *K2, yo, ssk, k1, yo, k2tog, k2; rep from * to end.

Row 9: *K3, yo, k3tog, yo, k3; rep from * to end.

Rep Rows 1-10 for patt.

Waving Lace Wrap

Wrap Instructions

Cast on 46 sts.

Row 1 (RS): [P1, k1] 2 times, p1, pm, work in **Waving Lace** (beg with Row 1) to last 5 sts, pm, [p1, k1] 2 times, p1.

Row 2 (WS): [K1, p1] 2 times, k1, sm, work in **Waving Lace** to m, sm, [k1, p1] 2 times, k1.

Cont est'd patt until piece meas 60" from cast-on edge, end having just worked a Row 10. Bind off all sts.

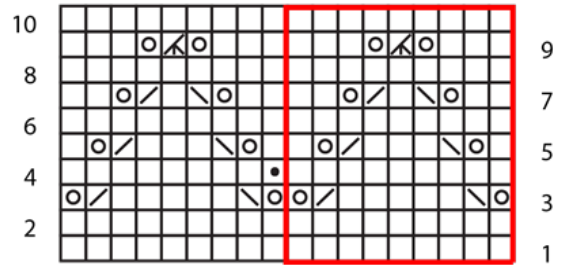
Finishing

Fringe








Cut 120 - 22" lengths of yarn. Attach in groups of 4 to each end of scarf for every 3 cast-on/bind-off sts. There will be 15 groups of fringe at each end.

Weave in ends. Wash and block to Finished Measurements.

Waving Lace



Key

	pattern repeat		k2tog
	knit on RS, purl on WS		ssk
	purl on RS, knit on WS		k3tog
	yo		



Waving Lace Wrap

Abbreviations

beg	begin(ning)
cont	continue
est'd	established
k	knit
k2tog	knit 2 stitches together (1 st dec'd)
k3tog	knit 3 stitches together (2 sts dec'd)
m	marker
meas	measures
p	purl
patt	pattern
pm	place marker
rep	repeat
RS	right side
sm	slip marker
ssk	slip next 2 sts individually knitwise, slip them back to left needle in this position, knit them together through the back loops (1 st dec'd)
st(s)	stitch(es)
WS	wrong side
yo	yarn over

