

Stitch Please™



Fall Festival Beanie

Type : Knit

Level : Advanced

By Lindsey Faciane

Fall Festival Beanie

Materials

Premier® Yarns *Stitch Please™ Chunky* (100% Wool; 3.5oz/100g, 120yds/110m)

- C1: 1135-36 Salted Caramel – 1 skein
- C2: 1135-35 Espresso Yourself – 1 skein
- C3: 1135-25 Rust in the Wind – 1 skein

Needles

US Size 9 (5.5 mm) 16" circular and set of dpns *or size needed to obtain gauge*

Notions

Tapestry needle

Stitch marker

Faux fur pom-pom (optional)

Size

One Size

Finished Measurements

Circumference: 20¼"

Length: 8½"

Gauge

19 sts x 21 rnds = 4" in stranded knitting

Save time, check your gauge.

Pattern Notes

This hat is knit in the round from the bottom up. Color changes are achieved through stranded knitting. When working the charted portion of the hat, hold colors throughout the round, changing colors where indicated. Read the chart from right to left.

Work begins on the circular needle. During crown shaping, when there are too few stitches to fit on the circular needle, switch to double-pointed needles instead.

Skills/techniques used in this pattern:

- Twisted knit stitches.
- Knit and purl stitches.
- K2tog decreases.
- Stranded colorwork.

Fall Festival Beanie

Beanie Instructions

Brim

With C1, cast on 96 sts. Pm and join to work in the rnd, being careful not to twist.

Rnds 1-6: * K1 tbl, p1; rep from * to end.

Hat Body

Work Rnds 1-30 of chart. The 12-st repeat will be worked 8 times across each rnd. Break C2 and C3, continue with C1 only.

Shape Crown

Rnd 1: *K2tog, k10, pm; rep from * to end – 8 sts dec'd, 88 sts rem.

Rnd 2: *K2tog, knit to m, sm; rep from * to end – 8 sts dec'd, 80 sts rem.

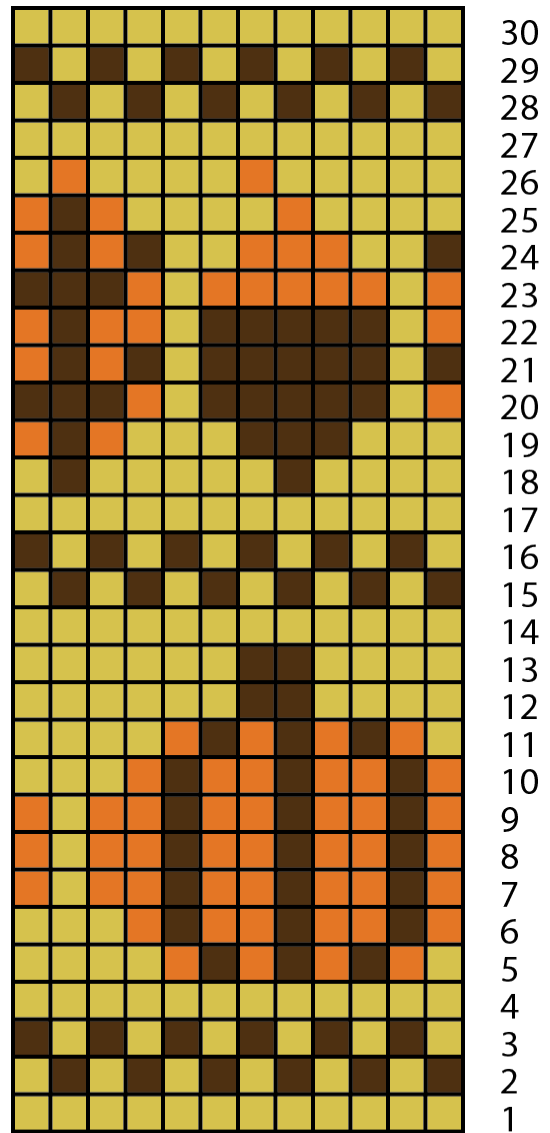
Rnds 3-10: Rep Rnd 2 – 16 sts rem.

Rnd 11: *K2tog; rep from * to end – 8 sts rem. Cut yarn leaving an 8" tail. Pass tail through rem live sts, pull taut, fasten off.

Finishing


Weave in ends and block. Sew pom-pom to top of crown if desired.


Chart




12-stitch repeat

Key

 C1, knit

 C2, knit

 C3, knit

Fall Festival Beanie

Abbreviations

dec'd	decreased
dpn(s)	double point needle(s)
k	knit
k1 tbl	knit one stitch through the back loop
k2tog	knit two stitches together
m	marker
p	purl
pm	place marker
rem	remain(s)
rep	repeat(ing)
rnd(s)	round(s)
sm	slip marker
st(s)	stitch(es)

