



Maya Mesh Hat

Level: Intermediate

SIZE

One Size (Adult Medium)

FINISHED MEASUREMENTS

Circumference: 21¾"

Height: 10"

MATERIALS

Premier® Yarns Sofie (88% Acrylic, 8% Polyamide, 4% Viscose; 1.75oz/50g, 93yds/85m)

- 1152-20 Steel – 2 balls

Needle: US Size 10 (6 mm) 16" circular needle and dpns and US Size 9 (5.5 mm) 16" circular needle *or size needed to obtain gauge*

Notions: Tapestry needle, stitch marker

GAUGE

11 sts x 15 rows = 4" in St st

Save time, check your gauge.

STITCH GUIDE

Mesh Lace (*multiple of 6 sts, see chart on next page*)

Rnds 1 and 5: *Yo, s2kp, yo, k3; rep from * to end.

Rnds 2, 4, 6 and 8: Knit.

Rnds 3 and 7: *K3, yo, s2kp, yo; rep from * to end.

Rep Rnds 1-8 for patt.

2x2 Rib (*multiple of 4 sts*)

Rnd 1: *K2, P2; rep from * to end.

Rep Rnd 1 for patt.

PATTERN NOTES

This Hat is worked from the bottom up in the round.

HAT

Brim

With smaller needle, cast on 60 sts, pm and join to work in the rnd, being careful not to twist sts. Work even in **2x2 Rib** until piece meas 2" from cast-on edge.

Main Body

Switch to larger needle, work even in **Mesh Lace** until piece meas 8" from cast-on edge, end having just worked a Rnd 8.

Crown Shaping

Note: Switch to dpns when work no longer fits comfortably on circular needles.

Rnd 1: *Yo, s2kp, k3; rep from * to end – 10 sts dec'd, 50 sts rem.

Rnds 2, 4 and 6: Knit.

Rnd 3: *K2, s2kp, yo; rep from * to end – 10 sts dec'd, 40 sts rem.

Rnd 5: *Yo, s2kp, k1; rep from * to end – 10 sts dec'd, 30 sts rem.

Rnd 7: *K1, k2tog; rep from * to end – 10 sts dec'd, 20 sts rem.

Rnd 8: *K2tog; rep from * to end – 10 sts dec'd, 10 sts rem.

Cut yarn leaving a long tail. Thread tail onto tapestry needle and draw through remaining sts.

Maya Mesh Hat

project continued

By Premier® Yarns Design Team

FINISHING

Weave in ends.

Abbreviations

dec('d) decreased

k knit

k2tog knit 2 sts together (1 st dec'd)

p purl

patt pattern

pm place marker

rem remain(ing)

rep repeat(ing)

rnd(s) round(s)

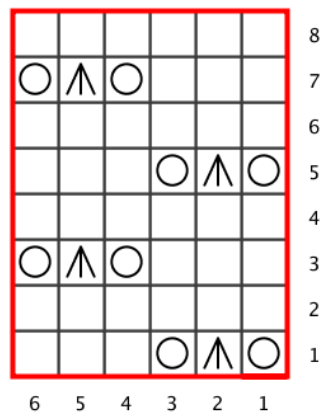
s2kp slip 2 sts tog as if to k, k1, pass both slipped sts over k st

st(s) stitch(es)

St st Stockinette stitch: knit every rnd.

tog together

yo yarn over



Key

