



Reverie Shawl

Level: Intermediate

SIZE(S)

One Size

FINISHED MEASUREMENTS

Width: 44"

Length at center: 22"

MATERIALS

Premier® Yarns So...Woolly™ (40% Wool, 60% Acrylic; 7oz/200g, 94yds/86m)

- 1112-09 Red – 3 balls

Needle: US Size 17 (12 mm) 24-32" circular needle *or size needed to obtain gauge*

Notions: Tapestry needle

GAUGE

7 sts x 10 rows = 4" in Lace Pattern

Save time, check your gauge.

PATTERN NOTES

This Shawl is worked from the top down from the center out in one piece.

STITCH GUIDE

Lace Pattern

Row 1 (RS): K2, yo, k1, yo, pm, k1, pm, yo, k1, yo, k2 – 4 sts inc'd.

Row 2: K2, p3, k1, p3, k2.

Row 3: K2, yo, knit to marker, yo, sm, k1, sm, yo, k1, yo, k2 – 4 sts inc'd.

Row 4: Knit.

Row 5: K2, yo, k2tog, *yo, k2tog; rep from * to 1 st before marker, yo, k1, yo, sm, k1, sm, yo, k2tog, *yo, k2tog; rep from * to last 3 sts, yo, k1, yo, k2 – 4 sts inc'd.

Row 6: Knit.

Row 7: K2, yo, knit to marker, yo, sm, k1, sm, yo, knit to the last 2 sts, yo, k2 – 4 sts inc'd.

Row 8: K2, purl to marker, sm, k1, sm, purl to last 2 sts, k2.

Rep Rows 3-8 for patt.

SHAWL

Cast on 7 sts.

Work Rows 1-8 of **Lace Pattern** – 23 sts, 16 sts inc'd.

Rep Rows 3-8, 6 times – 95 sts, 72 sts inc'd.

Work Rows 3-6 once more – 103 sts, 8 sts inc'd.

Knit 2 rows.

Bind off.

FINISHING

Weave in ends. Block gently.

Abbreviations

dec'd decrease(d)

inc'd increase(d)

k knit

k2tog knit 2 sts together (1 st dec'd)

patt pattern

pm place marker

p purl

rep repeat(ing)

RS right side

sm slip marker

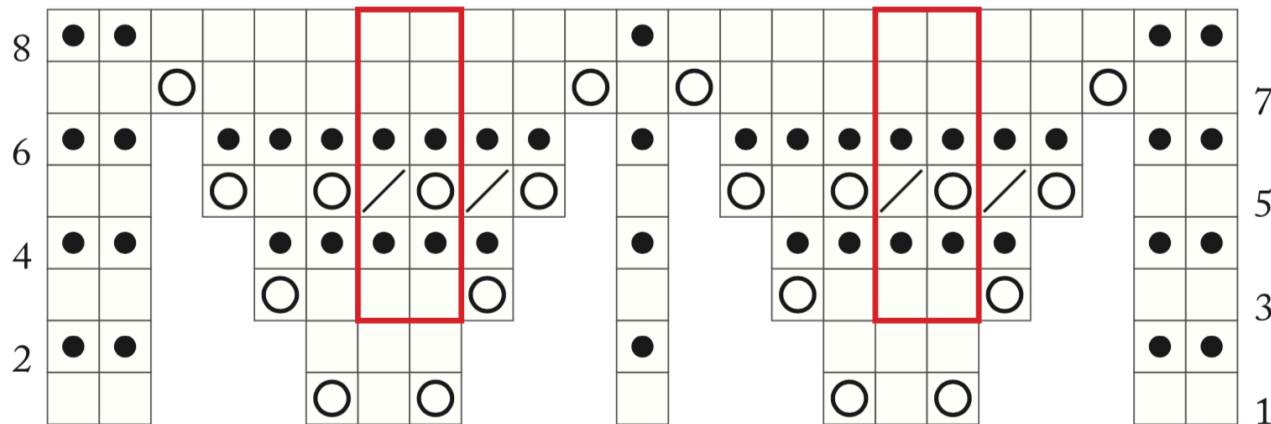
st(s) stitch(es)

yo yarn over






Reverie Shawl

project continued

By Premier® Yarns Design Team



Key

-  RS: knit; WS: purl with MC
-  RS: purl; WS: knit with CC1
-  RS: k2tog with MC
-  yo
-  patt rep