



Frosted Orchid Toque

Level: Intermediate

SIZE
Adult

FINISHED MEASUREMENTS

Circumference: 21"

Height: 11"

MATERIALS

Premier® Yarns *Serenity Chunky™ Ombre*
(100% Acrylic; 8.8 oz/250 g, 273 yds/250 m)

- #1075-10 Orchid – 1 ball

Needles: US Size 10 (6 mm) 16" circular knitting needle, US Size 11 (8mm) 16" circular needle and double pointed needles *or size needed to obtain gauge*

Notions: Tapestry needle, 2 stitch markers, cable needle

GAUGE

11 sts x 15 rows = 4" in st st on larger needle

26 stitch cable = 7" wide on larger needle

Save time, check your gauge.

STITCH GUIDE

2x2 Rib

Rnd 1: *K2, p2; rep from * around. Rep Rnd 1 for patt.

Cable (Worked over 26 sts)

Rnd 1: P2, k8, 3/3 RC, k8, p2.

Rnd 2: P2, k2, p6, k6, p6, k2, k2.

Rnd 3: P2, k6, 3/2 RPC, 3/2 LPC, k6, p2.

Rnd 4: P2, k2, (p4, k3) twice, p4, k2, p2.

Rnd 5: P2, 2/2 LPC, 3/2 RPC, p4, 3/2 LPC, 2/2 RPC, p2.

Rnd 6: P4, k5, p8, k5, p4.

Rnd 7: P4, 3/2 RC, p8, 3/2 LC, p4.

Rnd 8: P4, k5, p8, k5, p4.

Rnd 9: P2, 3/2 RC, 2/2 LC, p4, 2/2 RC, 3/2 LC, p2.

Rnd 10: P2, k3, p4, k2, p4, k2, p4, k3, p2.

Rnd 11: P2, k9, p4, k9, p2.

Rnds 12-16: Rep Rnds 10 and 11.

Rnd 17: P2, 3/2 LPC, 2/2 RPC, p4, 2/2 LPC, 3/2 RC, p2.

Rnd 18: Rep Rnd 8.

Rnd 19: P4, 3/2 LC, p8, 3/2 RC, p4.

Rnd 20: Rep Rnd 8.

Rnd 21: P2, 2/2 RC, 3/2 LC, p4, 3/2 RC, 2/2 LC, p2.

Rnd 22: P2, k2, p4, k3, p4, k3, p4, k2, p2.

NOTES

Work either the charted or the written instructions for the cable. If you are working from the chart, work all rnds from right to left.

HAT

Brim

With smaller circular ndl, cast on 56 sts. Join in the rnd, being careful not to twist sts. Pm to mark beginning of rnd. Work in **2x2 Rib** for 3". Switch to larger circular ndl.

Setup Rnd: P2, kf&b, (pf&b, p1) twice, (kf&b, k1) twice, (p1, pf&b) twice, kf&b, p2, pm, k38. 64 sts on ndl.

Cable

Next Rnd: Work **Cable** over first 26 sts, sl m, k38.

Cont as established, working rnds 2-22 of **Cable** over the first 26 sts of the rnd.

Frosted Orchid Toque

project continued

By Premier Yarns Design Team

Shape Crown

(Switch to dpns when there aren't enough sts to fit comfortably around.)

Rnd 1: P2, k2, (k2tog) twice, k3, (p2tog) twice, k3, (k2tog) twice, k2, p2, sl m, k3, (k2tog, k5) five times. 53 sts

Rnd 2: P2, k2, (p2, k3) twice, p2, k2, p2, sl m, k to end.

Rnd 3: P2, k1, (k2tog) three times, p2tog, (k2tog) three times, k1, p2, sl m, k3, (k2tog, k4) five times. 42 sts.

Rnd 4: P2, k4, p1, k4, p2, sl m, k3, (k2tog, k3) five times. 37 sts.

Rnd 5: P2, (k2tog) twice, p1, (k2tog) twice, p2, sl m, k3, (k2tog, k3) five times. 28 sts.

Rnd 6: P2, k2, p1, k2, p2, remove m, k3, (k2tog, k2) five times. 23 sts.

Rnd 7: (K2tog, k1) 7 times, k2. 16 sts.

Rnd 8: (K2tog) 8 times. 8 sts. Cut yarn, leaving a 6" tail. Thread tapestry ndl and draw through remaining sts. Pull tight and fasten off securely to WS of hat.

FINISHING

Weave in all ends.

Abbreviations

2/2 LC Slip 2 sts to cable needle and hold to front, k2, k2 from cable needle

2/2 RC Slip 2 sts to cable needle and hold to back, k2, k2 from cable needle.

2/2 LPC Slip 2 sts to cable needle and hold to front, p2, k2 from cable needle

2/2 RPC Slip 2 sts to cable needle and hold to back, k2, p2 from cable needle

3/2 LC Slip 3 sts to cable needle and hold to front, k2, k3 from cable needle

3/2 RC Slip 2 sts to cable needle and hold to back, k3, k2 from cable needle

3/2 LPC Slip 3 sts to cable needle and hold to front, p2, k3 from cable needle

3/2 RPC Slip 2 sts to cable needle and hold to back, k3, p2 from cable needle

3/3 RC Slip 3 sts to cable needle and hold to back, k3, k3 from cable needle

cont continue

dpn double pointed needle

k knit

k2tog knit two stitches together (1 st decreased)

kf&b knit into the front and back of stitch (1 st increased)

m marker

ndl needle

p purl

p2tog purl two stitches together (1 st decreased)

pf&b purl into the front and back of stitch (1 st increased)

patt pattern

pm place marker

rep repeat

rnd round

sl slip

st(s) stitches

st st stockinette stitch

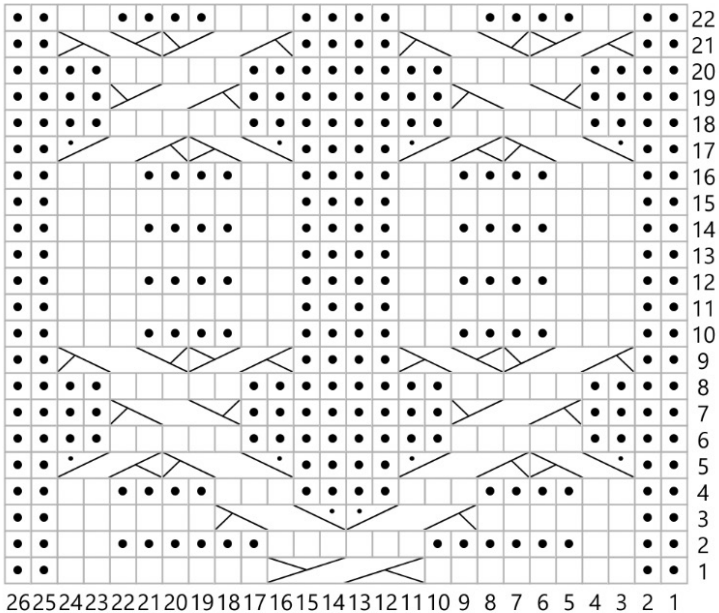
WS wrong side

Frosted Orchid Toque

project continued

By Premier Yarns Design Team

Cable



Key

- knit
- purl
- 2/2 RC
- 2/2 LC
- 2/2 RPC
- 2/2 LPC
- 3/2 LC
- 3/2 RC
- 3/2 LPC
- 3/2 RPC
- 3/3 RC

