

**FINISHED MEASUREMENTS**

40" x 48"

MATERIALS

Premier® Yarns Serenity® Chunky (100% acrylic; 300gm/328 yds)

- #1061-12 Lavender – 3 balls

Needle: US Size 13 (9 mm) 29" circular needle *or size needed to obtain gauge*

Notions: Tapestry needle, cable needle

GAUGE

9 sts x 12 rows = 4" in St st

Save time, check your gauge.

STITCH GUIDE

2/2RC (2/2 Right Cross): Slip 2 sts onto cable needle and hold in back, k2, k2 from cable needle.

2/2LC (2/2 Left Cross): Slip 2 sts onto cable needle and hold in front, k2, k2 from cable needle.

THROW

Cast on 129 sts.

Row 1 (WS): Sl 1 wyif, *k3, (p1, k1) 4 times, p12, (k1, p1) 4 times; rep from * to last 4 sts, k4.

Row 2 (RS): Sl 1 wyif, *k5, p1, k1, p1, k2, p1, k12, p1, k2, p1, k1, p1, k2; rep from * to last 4 sts, k4.

Row 3: Sl 1 wyif, *k3, p2, k1, p1, k1, p2, k1, p12, k1, p2, k1, p1, k1, p2; rep from * to last 4 sts, k4.

Row 4: Sl 1 wyif, *k4, (p1, k1) 3 times, p1, k4, 2/2RC, k4, (p1, k1) 4 times; rep from * to last 4 sts, k4.

Row 5: Sl 1 wyif, *k3, (p1, k1) 4 times, p12, (k1, p1) 4 times; rep from * to last 4 sts, k4.

Row 6: Sl 1 wyif, *k5, p1, k1, p1, k2, p1, k2, 2/2LC twice, k2, p1, k2, p1, k1, p1, k2; rep from * to last 4 sts, k4.

Row 7: Sl 1 wyif, *k3, p2, k1, p1, k1, p2, k1, p12, k1, p2, k1, p1, k1, p2; rep from * to last 4 sts, k4.

Row 8: Sl 1 wyif, * k4, (p1, k1) 3 times, p1, 2/2RC 3 times, (p1, k1) 4 times; rep from * to last 4 sts, k4.

Row 9: Sl 1 wyif, *k3, (p1, k1) 4 times, p12, (k1, p1) 4 times; rep from * to last 4 sts, k4.

Row 10: Sl 1 wyif, *k5, p1, k1, p1, k2, p1, k2, 2/2LC twice, k2, p1, k2, p1, k1, p1, k2; rep from * to last 4 sts, k4.

Row 11: Sl 1 wyif, *k3, p2, k1, p1, k1, p2, k1, p12, k1, p2, k1, p1, k1, p2; rep from * to last 4 sts, k4.

Row 12: Sl 1 wyif, * k4, (p1, k1) 3 times, p1, k4, 2/2RC, k4, (p1, k1) 4 times; rep from * to last 4 sts, k4.

Row 13: Sl 1 wyif, *k3, (p1, k1) 4 times, p12, (k1, p1) 4 times; rep from * to last 4 sts, k4.

Row 14: Sl 1 wyif, *k5, p1, k1, p1, k2, p1, k12, p1, k2, p1, k1, p1, k2; rep from * to last 4 sts, k4.

Row 15: Sl 1 wyif, *k3, p2, k1, p1, k1, p2, k1, p12, k1, p2, k1, p1, k1, p2; rep from * to last 4 sts, k4.

Row 16: Sl 1 wyif, *k4, (p1, k1) 3 times, p1, k12, (p1, k1) 4 times; rep from * to last 4 sts, k4.

Row 17: Sl 1 wyif, *k3, (p1, k1) 4 times, p12, (k1, p1) 4 times; rep from * to last 4 sts, k4.

Rows 18-25: Repeat Rows 14-17, twice.

Rows 26-28: Repeat Rows 14-16.

Repeat Rows 1-28 until Throw measures approximately 48", ending with Row 14. Bind off in pattern.

Cabled Knot Throw

Level: Intermediate

Cabled Knot Throw

By Premier Yarns Design Team

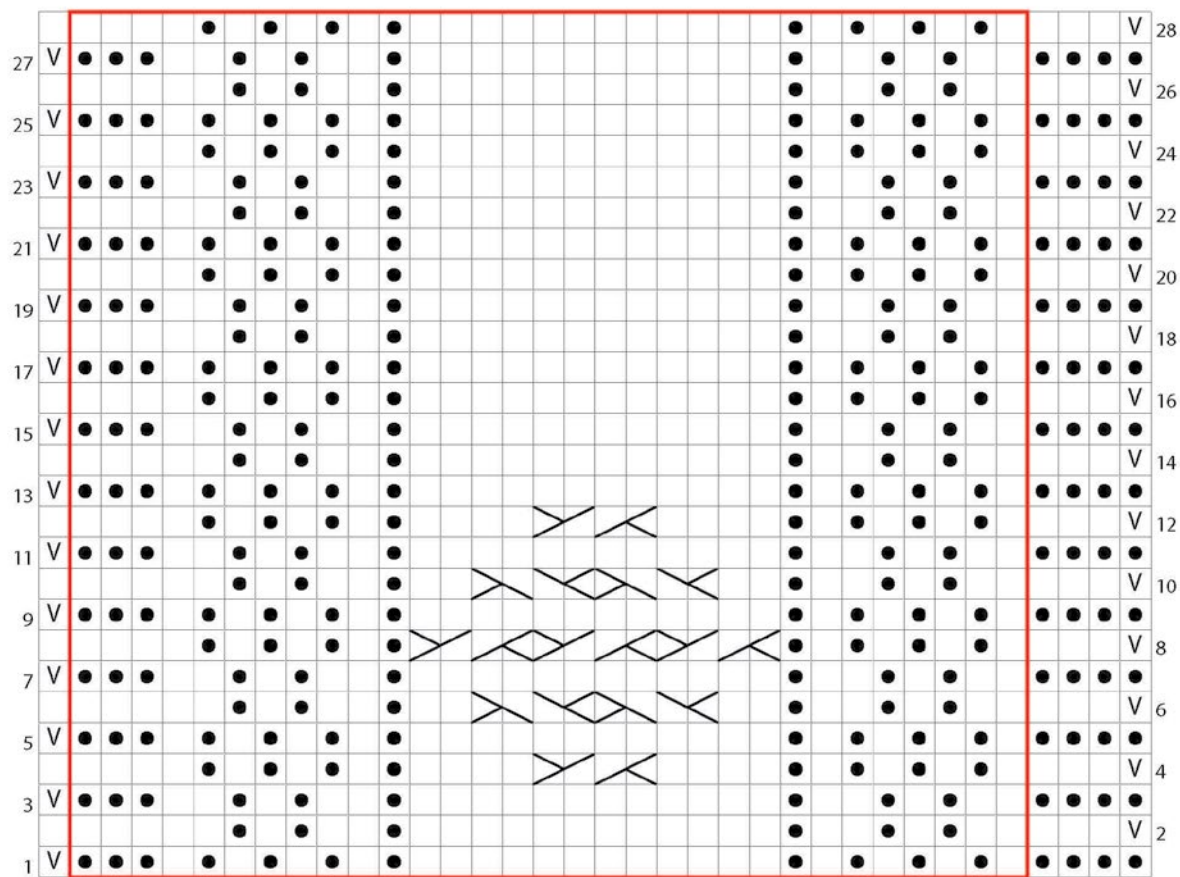
project continued



FINISHING

Weave in ends.

Abbreviations

- k** knit
- p** purl
- rep** repeat(ing)
- RS** right side
- sl** slip
- st(s)** stitch(es)
- WS** wrong side
- wyif** with yarn in front



- RS: Knit; WS: Purl
-  2/2LC
- RS: Purl; WS: Knit
-  2/2RC
- V Both Sides: Slip 1 st wyif
- Repeat