



Arden Throw

FINISHED MEASUREMENTS

Length: 52"

Width: 53½"

MATERIALS

Premier® Yarns Puzzle® Shimmer (98% Acrylic, 2% Metalized Polyester; 5.29oz/150g, 246yds/225m)

- 2118-08 Checkers Shimmer – 9 balls

Hook: US Size J-10 (6 mm) crochet hook *or size needed to obtain gauge*

Notions: Tapestry needle

GAUGE

6 Clusters = 4" in Cluster Pattern

Save time, check your gauge.

Skills/techniques used in this pattern:

- Chain, single, and double crochet stitches.
- Cluster stitches.

STITCH GUIDE

Cluster – CL: Yo, insert hk in st/sp, pull up lp, yo, pull through 2 lps, [yo, insert hook in same st and pull up lp, yo pull through 2 lps] twice, yo, pull through all 4 lps on hk, ch 1.

Cluster Pattern (*even number of sts*)

Row 1 (RS): Sc in 2nd ch from hk and in next ch, *ch 1, sk next ch, sc in next ch; rep from * to last 3 ch, ch 1, sk next ch, sc in last 2 ch, turn.

Row 2 (WS): Ch 4 (counts as dc and ch-1 sp), *sk next sc **CL** in next ch-1 sp, ch 1; rep from * to last ch-1 sp, **CL** in last ch-1 sp, ch 1, sk next sc, dc in last sc, turn.

Row 3: Ch 1, sc in 1st dc, sc in 1st ch-1 sp; *ch 1, sk next **CL**, sc in next ch-1 sp; rep from * across,

ending with sc in 3rd ch of beg ch-4, turn.
Rep Rows 2-3 for pattern.

THROW

Ch 160.

Work in **Cluster Pattern** for 52".

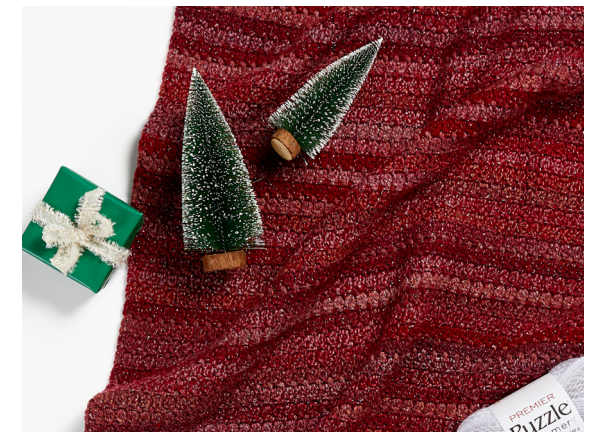
Fasten off.

FINISHING

Weave in ends.

Abbreviations

ch	chain
dc	double crochet
hk	hook
lp(s)	loop(s)
rep	repeat(ing)
RS	right side
sc	single crochet
sk	skip
sp	space
st(s)	stitch(es)
yo	yarn over
WS	wrong side

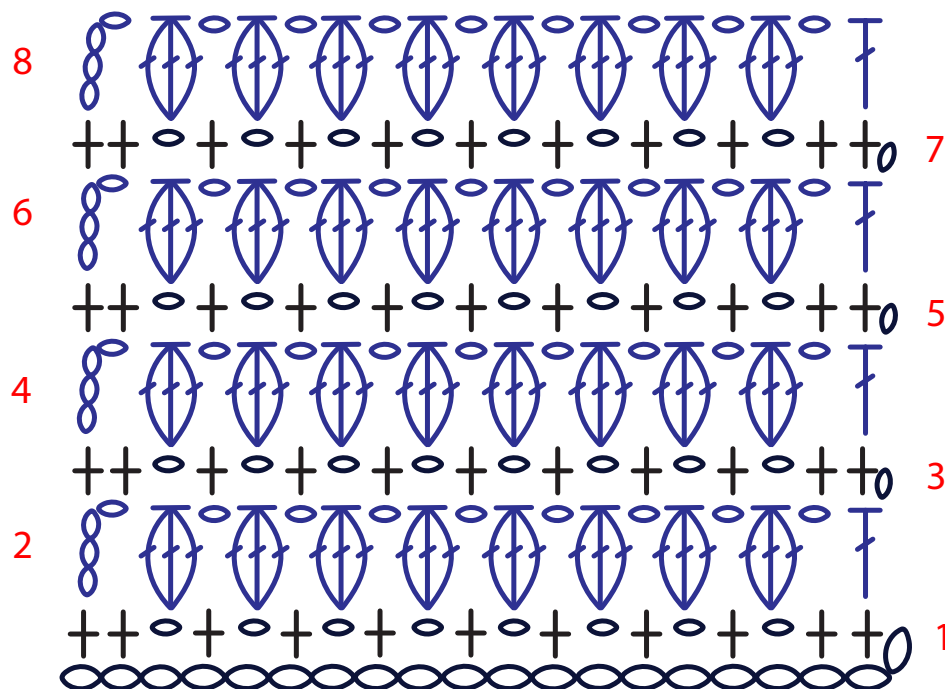


Arden Throw

By Premier® Yarns Design Team

project continued

Chart



Key

- ch
- ⊕ sc
- ⊥ dc
- ⊥
⊥
⊥ cl