



Snowy Night Pillow

FINISHED MEASUREMENTS

Length: 19"

Circumference: 38"

MATERIALS

Premier® Yarns Parfait® XL Shimmer (94% Polyester, 6% Metallized Polyester; 7oz/200g, 87yds/80m)

- MC: 2112-08 Navy Shimmer – 1 ball
- CC: 2112-12 Silver Shimmer – 1 ball

Needles: US Size 15 (10 mm) 24-32" circular or size needed to obtain gauge

Notions: Tapestry needle, pins, needle and sewing thread (to install zipper), 20" zipper, 19x19" pillow form

GAUGE

6 sts x 8 rnds = 4" in stranded knitting

Save time, check your gauge.

STITCH GUIDE

Kitchener Stitch

Work with half the sts on a front needle, and half the sts on a back needle.

1. Insert tapestry needle through first st on front needle as if to purl, leave st on needle, pull yarn through.
2. Insert tapestry needle through first st on back needle as if to knit, leave st on needle, pull yarn through.
3. Insert tapestry needle through first st on front needle as if to knit and sl st off needle.
4. Insert tapestry needle through next st on front needle as if to purl, leave st on needle, pull yarn through.
5. Insert tapestry needle through first st on back needle as if to purl and sl st off needle.
6. Insert tapestry needle through next st on

back needle as if to knit, leave st on needle, pull yarn through.

Rep steps 3-6 until 1 st remains on each needle.

7. Insert tapestry needle through first st on front needle as if to knit and sl st off needle.

8. Insert tapestry needle through first st on back needle as if to purl and sl st off needle.

Using the tip of the tapestry needle, work across the row of grafted stitches, evening out tension and moving any extra yarn toward the tail.

PATTERN NOTES

This pillow cover is knit in the round from the bottom up using stranded colorwork. During finishing, the live stitches are divided in half and grafted together using Kitchener stitch to close the top of the pillow. A zipper is installed along the bottom edge so you can easily insert and remove a pillow form.

PILLOW COVER

Note: Join CC as indicated on Snowflake Chart.

Cast on 58 sts, pm and join to knit in the rnd, being careful not to twist.

Rnd 1: Work Rnd 1 of Snowflake Chart over 29 sts, pm, work Rnd 1 of Snowflake Chart over 29 sts to end.

Cont as est'd through Rnd 39 of Snowflake Chart. Holding the first 29 sts and second 29 sts parallel to one another, graft the two stitches together using **Kitchener Stitch**.

FINISHING

Weave in ends.

Snowy Night Pillow

By Premier® Yarns Design Team

project continued

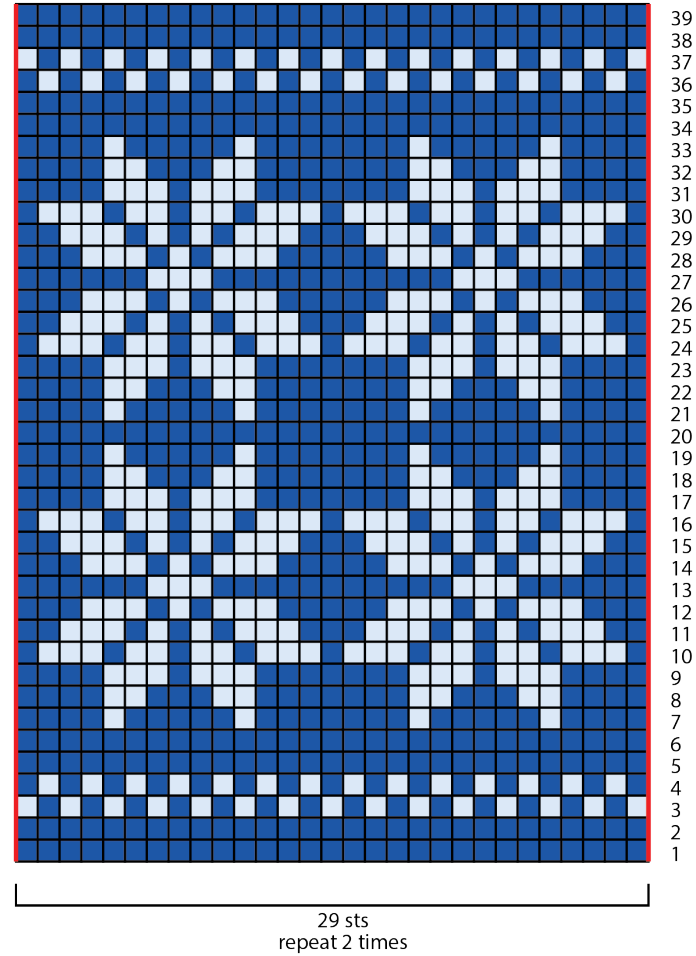
Zipper

Measure length of front opening. Shorten zipper to this length. Unzip zipper. Place each side of zipper on the inside of each edge at the bottom of the pillow. Use pins to secure in place. Sew zipper to pillow cover neatly and securely.




Abbreviations

approx.	approximately
CC	contrast color
k	knit
MC	main color
meas	measures
pm	place marker
rep	repeat
rnd(s)	round(s)
st(s)	stitch(es)

Snowflake Chart



Key

-  pattern repeat
-  with MC, knit
-  with CC, knit