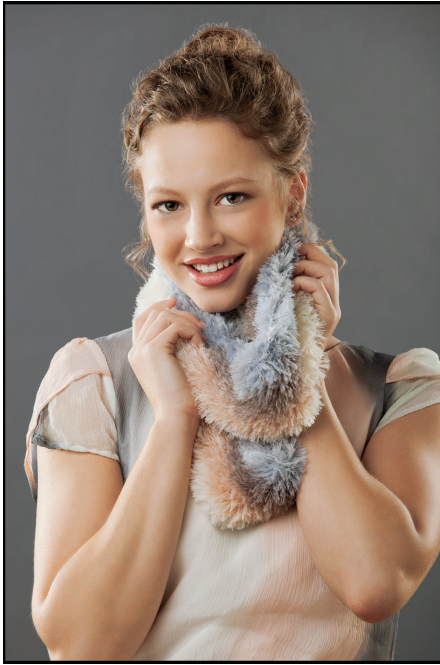


Lash Lux Ombre Cowl



Gauge:

16 stitches per 4"

Finished Measurements:

5" tall, 54" wide, laid flat.

Instructions:

Using Color A, cast on 150 stitches and join in the round, being careful not to twist the work.

Knit 5 rounds.

Switch to color B.

Knit 5 rounds.

Switch to color C.

Knit 5 rounds.

Switch to color D.

Knit 5 rounds.

Bind Off and weave in ends.

Skill Level: Easy



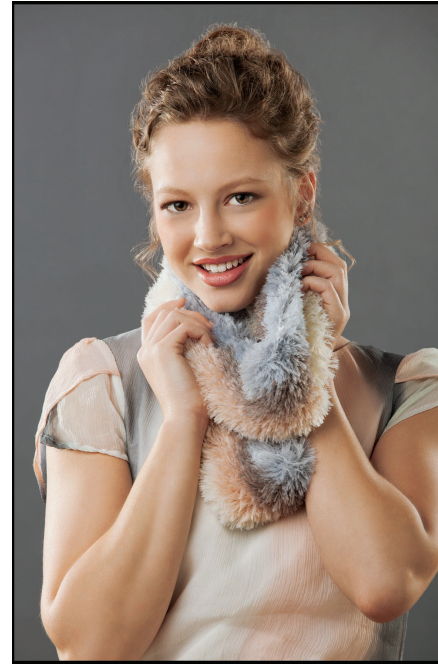
Materials:

- 1 skein Lash Lux® colorway 'Ermine' (Color A)
- 1 skein Lash Lux® colorway 'Rex Rabbit' (Color B)
- 1 skein Lash Lux® colorway 'Coyote' (Color C)
- 1 skein Lash Lux® colorway 'Blue Fox' (Color D)
- US 8, 24" circular needle
- Tapestry needle (for weaving in ends)

premier[®]
YARNS

© Premier 2012
Used with permission.

Lash Lux Ombre Cowl



Gauge:

16 stitches per 4"

Finished Measurements:

5" tall, 54" wide, laid flat.

Instructions:

Using Color A, cast on 150 stitches and join in the round, being careful not to twist the work.

Knit 5 rounds.

Switch to color B.

Knit 5 rounds.

Switch to color C.

Knit 5 rounds.

Switch to color D.

Knit 5 rounds.

Bind Off and weave in ends.

Skill Level: Easy



Materials:

- 1 skein Lash Lux® colorway 'Ermine' (Color A)
- 1 skein Lash Lux® colorway 'Rex Rabbit' (Color B)
- 1 skein Lash Lux® colorway 'Coyote' (Color C)
- 1 skein Lash Lux® colorway 'Blue Fox' (Color D)
- US 8, 24" circular needle
- Tapestry needle (for weaving in ends)

premier[®]
YARNS

© Premier 2012
Used with permission.