



Lacy Bandana Cowl

SIZE

One Size

FINISHED MEASUREMENTS

Circumference: 25" (at narrowest point around neck)

Depth: 18" (at center front point)

MATERIALS

Premier® Yarns *Momenti™* (58% Cotton, 42% Acrylic; 3.5 oz/100 g, 109 yds/100 m)

- 2016-01 Sweet Pea – 1 ball

Needles: US Size 9 (5.5 mm) 24" circular needle or size needed to obtain gauge

Notions: Tapestry needle, 3 stitch markers (2 in one color and 1 in another)

GAUGE

16 sts x 20 rows = 4" in pattern stitch

Save time, check your gauge.

Skills/Techniques Used:

- Knitting in the round
- Knit and purl stitches
- Using stitch markers
- K2tog, ssk and s2kp decreases
- Yo increases

PATTERN NOTES

This Cowl is worked from the top down in the round with increases to create the center point. Both written and charted instructions are included for the stitch pattern.

COWL

Setup

Cast on 100 sts, pm (single color marker to indicate beg/end of rnd) and join for working in the rnd, being careful not to twist sts.

Rnd 1: Purl.

Rnd 2: Knit.

Rnd 3: P49, pm, p1 (center stitch), pm, purl to end.

Neck

Note: This section is charted on the last page.

Rnd 1: *Yo, ssk, k1, k2tog, yo, k1; rep from * to 7 sts bef next m, yo, ssk, k1, k2tog, yo, ssk, yo, sm, k1 (center stitch), sm, yo, k2tog, *yo, ssk, k1, k2tog, yo, k1; rep from * to end.

Rnd 2: Knit.

Rnd 3: *K1, yo, s2kp, yo, k2; rep from * to 7 sts bef next m, k1, yo, s2kp, yo, k1, ssk, yo, sm, k1, sm, yo, k2tog, *k1, yo, s2kp, yo, k2; rep from * to end.

Rnd 4: Knit.

Rep Rnds 1-4, 3 more times.

Increase Section

Note: Stitch count increases by 2 stitches every odd numbered round, a total of 12 stitches per repeat. This section is charted on the last page.

Rnd 1: *Yo, ssk, k1, k2tog, yo, k1; rep from * to 1 st bef next m, k1, yo, sm, k1 (center stitch), sm, yo, k2, *yo, ssk, k1, k2tog, yo, k1; rep from * to end.

Even Rnds 2-12: Knit.

Rnd 3: *K1, yo, s2kp, yo, k2; rep from * to 2 sts bef next m, k2, yo, sm, k1, sm, yo, k3, *k1, yo, s2kp, yo, k2; rep from * to end.

Lacy Bandana Cowl

By Premier® Yarns Design Team

project continued

Rnd 5: *Yo, ssk, k1, k2tog, yo, k1; rep from * to 3 sts bef next m, yo, ssk, k1, yo, sm, k1, sm, yo, k1, k2tog, yo, k1, *yo, ssk, k1, k2tog, yo, k1; rep from * to end.

Rnd 7: *K1, yo, s2kp, yo, k2; rep from * to 4 sts bef next m, k1, yo, ssk, k1, yo, sm, k1, sm, yo, k1, k2tog, yo, k2, *k1, yo, s2kp, yo, k2; rep from * to end.

Rnd 9: *Yo, ssk, k1, k2tog, yo, k1; rep from * to 5 sts bef next m, yo, ssk, k3, yo, sm, k1, sm, yo, k3, k2tog, yo, k1, *yo, ssk, k1, k2tog, yo, k1; rep from * to end.

Rnd 11: *K1, yo, s2kp, yo, k2; rep from * to next m, yo, sm, k1, sm, yo, k1, *k1, yo, s2kp, yo, k2; rep from * to end.

Rep Rnds 1-12 until Cowl measures 18¼" deep from cast-on edge to center point, or to desired depth.

Edging

Rnd 1: Purl.

Rnd 2: Knit to next m, yo, sm, k1, sm, yo, knit to end – 2 sts inc'd.

Work Rnds 1-2 once and then work Rnd 1.

Loosely bind off all sts knitwise.

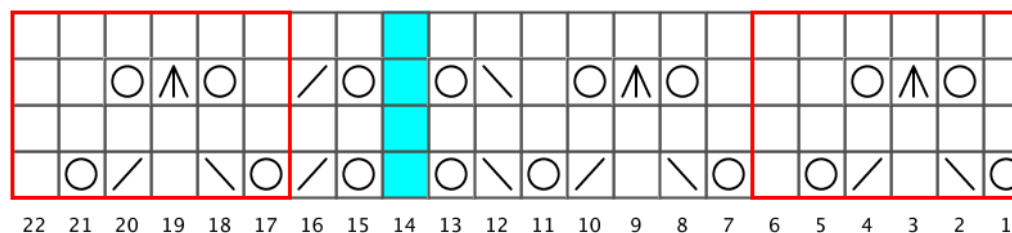
Finishing

Weave in ends.

Abbreviations

bef	before
beg	begin(ning)
dec('d)	decrease(d)
inc('d)	increase(d)
k	knit
k2tog	knit 2 sts together (1 st dec'd)
m	marker
p	purl
pm	place marker
rep	repeat(ing)
rnd(s)	round(s)
s2kp	slip 2 sts tog as if to k, k1, pass both slipped sts over k st (2 sts dec'd)
sm	slip marker
ssk	slip slip knit (1 st dec'd)
st(s)	stitch(es)
yo	yarn over

Neck Chart



Key

□	knit
○	yo
∖	ssk
/	k2tog
□	patt rep
■	center stitch
▲	s2kp

Lacy Bandana Cowl

By Premier® Yarns Design Team

project continued

Increase Section Chart

