

PATTERN COLLECTION: *WOMEN***Lotus Shrug**

Designed by Universal Yarn
Design Team

SIZES

Small (Medium, Large, 1X, 2X)
Shown in Small size.

FINISHED MEASUREMENTS

Back Width: 16 (18, 20, 22, 24)"

Sleeve Circumference: 16 (17, 18,
19, 20)"

MATERIALS

Fibra Natura *Whisper Lace* (70%
superwash wool, 30% silk;
50g/440 yds)

- 104 Fog – 3 (3, 4, 4, 5)
balls

Needles: US Size 5 (3.75 mm) 32"
circular *or size needed to obtain
gauge*

Notions: Stitch marker, tapestry
needle

GAUGE

29 sts x 36 rows = 4" in St st

Save time, check your gauge.

Knit. Relax. Smile. Repeat!

2014 © Universal Yarn, Inc.

All rights reserved.

www.universalyarn.com

This pattern may not be reproduced for business, trade or sale.

STITCH GUIDE

Lotus Lace

(multiple of 10 sts)

Rnd 1: Knit.

Rnd 2: Purl.

Rnd 3: Knit.

Rnd 4: Purl.

Rnd 5: Knit.

Rnd 6: * Yo, k3, sl2-k1-p2sso, k3, yo, k1; rep from * to end.

Rnd 7: * K1, yo, k2, sl2-k1-p2sso, k2, yo, k2; rep from * to end.

Rnd 8: * K2, yo, k1, sl2-k1-p2sso, k1, yo, k3; rep from * to end.

Rnd 9: * K3, yo, sl2-k1-p2sso, yo, k4; rep from * to end.

Rnd 10: * K1, p2, k3, p2, k2; rep from * to end.

Rnd 11: * Yo, ssk, p1, yo, sl2-k1-p2sso, yo, p1, k2tog, yo, k1; rep from * to end.

Rnd 12: * K2, p1, k3, p1, k3; rep from * to end.

Rnd 13: * K1, yo, ssk, yo, sl2-k1-p2sso, yo, k2tog, yo, k2; rep from * to end.

Rnd 14: * K1, p1, k5, p1, k2; rep from * to end.

Rnd 15: * K1, p1, k1, yo, sl2-k1-p2sso, yo, k1, p1, k2; rep from * to end.

Rnd 16: * K1, p1, k5, p1, k2; rep from * to end.
Rep Rnds 1-16 for patt.

PATTERN NOTES

The body of this shrug is worked in one piece, sideways. The sleeve seams are then sewn, stitches are picked up around the perimeter of the body opening, and the lace edging is worked out in the round.

BODY

Cast on 116 (124, 130, 138, 146) sts. Work in St st until piece meas 32 (34, 36, 38, 40)". Bind off all sts.

Fold piece in half with right sides together. Sew Sleeve seams together for 8" along either end, leaving 16 (18, 20, 22, 24)" unsewn for Body Opening.

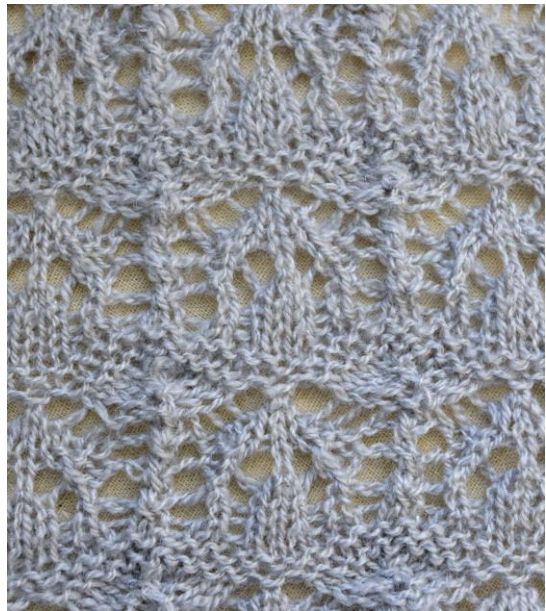
EDGING

With RS facing, beginning at center back, pick up and knit 270 (300, 330, 360, 390) sts evenly around Body Opening. PM and join to work in the rnd.

Work Rows 1-16 of Lotus Lace patt, 4 times, then rep Rows 1-3, 1 more time. Bind off all sts pwise, loosely.

FINISHING

Weave in ends and block.



Knit. Relax. Smile. Repeat!

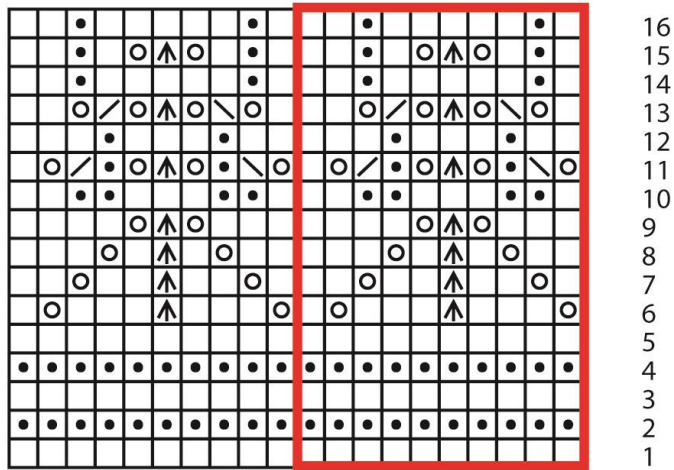
2014 © Universal Yarn, Inc.

All rights reserved.

www.universalyarn.com

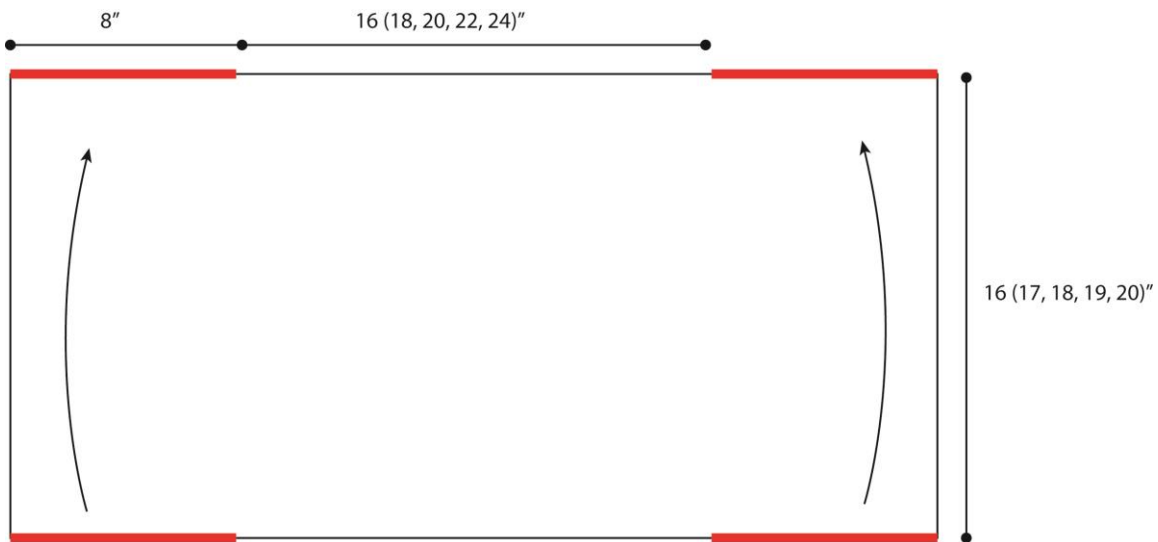
This pattern may not be reproduced for business, trade or sale.


Lotus Lace (multiple of 10 sts)



Key

-  knit
-  purl
-  yo
-  sl2-k1-p2sso
-  ssk
-  k2tog
-  pattern repeat



 = Sleeve Seam

Knit, Relax, Smile, Repeat!

2014 © Universal Yarn, Inc.

All rights reserved.

www.universalyarn.com

This pattern may not be reproduced for business, trade or sale.