



Fudge Ripple Throw

FINISHED MEASUREMENTS

Width: 33"
Length: 60"

MATERIALS

Premier® Yarns Just Yarn® Worsted Value
(100% Acrylic; 14oz/400g, 875yds/800m)

- C1: 2125-04 Black – 1 skein
- C2: 2125-15 Pecan – 1 skein
- C3: 2125-19 Linen – 1 skein
- C4: 2125-18 Aran – 1 skein

Hook: US Size I-9 (5.5 mm) *or size needed to obtain gauge*

Notions: Tapestry needle

GAUGE

one 16-st rep = 2½" in Lacy Chevrons patt
6 rows = 4" in Lacy Chevrons patt

Save time, check your gauge.

Skills/techniques used in this pattern:

- Chains and double crochet stitches.
- Decreasing.
- Changing colors.

STITCH GUIDE

Lacy Chevrons (*multiple of 16 sts + 1, begins with multiple of 16 chs + 4*)

Row 1: Dc2tog in 5th and 6th chs from hook (this plus skipped chs counts as a dc3tog), ch 1, sk 1 ch, dc in next 3 chs, ch 1, sk 1 ch, * 5 dc in next ch, ch 1, sk 1 ch, dc in next 3 chs, ch 1, sk 1 ch, dc5tog over next 5 chs, ch 1, sk 1 ch, dc in next 3 chs, ch 1, sk 1 ch; rep from * to last 9 chs, 5 dc in next ch, ch 1, sk 1 ch, dc in next 3 chs, ch 1, sk 1 ch, dc3tog over last 3 chs, turn.

Row 2: Ch 3, sk next ch, dc in next ch (with the ch 3, counts as dc2tog), dc in next 2 dc, ch 1, sk 1 ch, dc in next 2 dc, * (dc, ch 1, dc, ch 1, dc) in next dc, dc in next 2 dc, ch 1, sk 1 ch, dc in next

2 dc, dc3tog over next 5 sts and sps, skipping the two ch-1 sps, dc in next 2 dc, ch 1, sk 1 ch, dc in next 2 dc; rep from * to last 5-dc group, (dc, ch 1, dc, ch 1, dc) in next dc, dc in next 2 dc, ch 1, sk 1 ch, dc in next 2 dc, dc2tog over last 3 sts/sp, skipping the ch-1 sp, turn.

Row 3: Ch 3, dc2tog over next sp and st (with the ch 3, counts as dc3tog), ch 1, sk ch-1 sp, dc in next 3 dc, ch 1, sk 1 ch, * 5 dc in next dc, ch 1, sk 1 ch, dc in next 3 dc, ch 1, sk 1 ch, dc5tog, ch 1, sk 1 ch, dc in next 3 dc, ch 1, sk 1 ch; rep from * to last (dc, ch 1, dc, ch 1, dc) group, 5 dc in next dc, ch 1, sk 1 ch, dc in next 3 dc, ch 1, sk 1 ch, dc3tog, turn.

Rep Rows 2-3 for patt.

PATTERN NOTES

This throw is worked in one piece. Cut colors at each color change and weave in ends. To change colors, work through to the final stitch in the old color, working the final yarnover of this stitch with the new color.

THROW

With C1, ch 212. Work Rows 1-2 of **Lacy Chevrons** patt.

With C2, work in **Lacy Chevrons** patt for 6 rows. with C1, work in **Lacy Chevrons** patt for 2 rows. With C3, work in **Lacy Chevrons** patt for 6 rows. with C1, work in **Lacy Chevrons** patt for 2 rows. With C4, work in **Lacy Chevrons** patt for 6 rows. with C1, work in **Lacy Chevrons** patt for 2 rows. Rep the last 24 rows, 2 more times.

With C1, work in **Lacy Chevrons** patt for 2 rows. With C2, work in **Lacy Chevrons** patt for 6 rows. with C1, work in **Lacy Chevrons** patt for 2 rows. With C3, work in **Lacy Chevrons** patt for 6 rows. with C1, work in **Lacy Chevrons** patt for 2 rows. Fasten off.

Fudge Ripple Throw

By Premier® Yarns Design Team

project continued

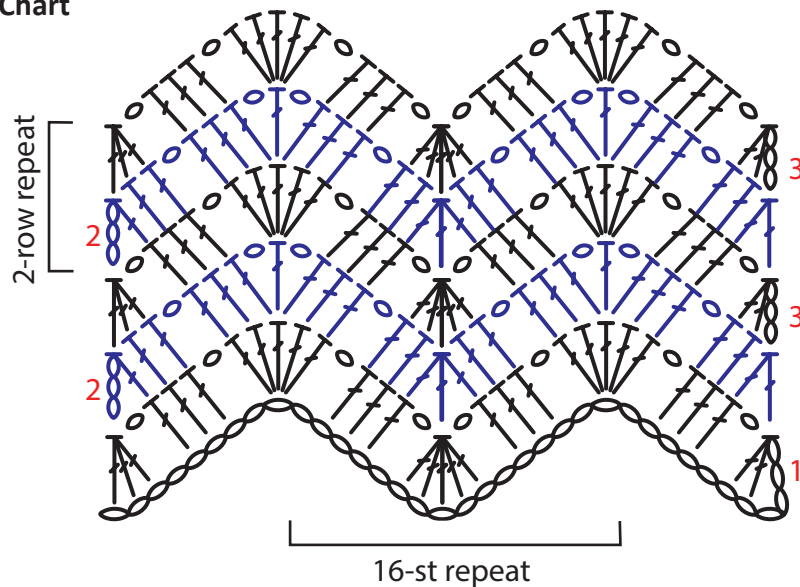
FINISHING

Weave in ends and block.

Abbreviations

C	color
ch	chain
dc	double crochet
dc2/3/5tog	double crochet 2/3/5 stitches together
patt	pattern
sk	skip
sp	space
st(s)	stitch(es)

Chart



Key

