



Razor Shell Shawlette

Level: Advanced

SIZE

One Size

FINISHED MEASUREMENTS

Wingspan: 67"

Depth: 17"

MATERIALS

Premier Yarns® Hipster™ Cotton

(100% Cotton; 3.5 oz/100 g, 229 yds/210 m)

- 2010-07 Tropical Dream – 2 balls

Needle: US Size 8 (5 mm) 32" circular needle
or size needed to obtain gauge

Notions: Tapestry needle, stitch markers

GAUGE

20 sts x 24 rows = 4" in pattern stitch

Save time, check your gauge.

PATTERN NOTES

This Shawlette is worked from the top down, beginning with a garter tab cast on. This pattern is charted only, see charts on next page.

SHAWLETTE

Garter Tab

Cast on 2 sts and then work 6 rows even in Garter st (knit every row).

Row 1 (RS): K2, turn work 90 degrees and pick up 3 sts (one st in each Garter ridge), pick up 2 sts in the cast-on edge – 7 sts.

Row 2 (WS): K2, pm, p1, pm, p1, pm, p1, pm, k2.

Setup

Work **Setup Chart** once – 22 sts inc'd, 29 sts total.

Main Body

Work **Main Body Chart** 7 times – 336 sts inc'd, 365 sts total.

Very loosely bind off all sts.

FINISHING

Firmly block to finished measurements.
Weave in ends.

Abbreviations

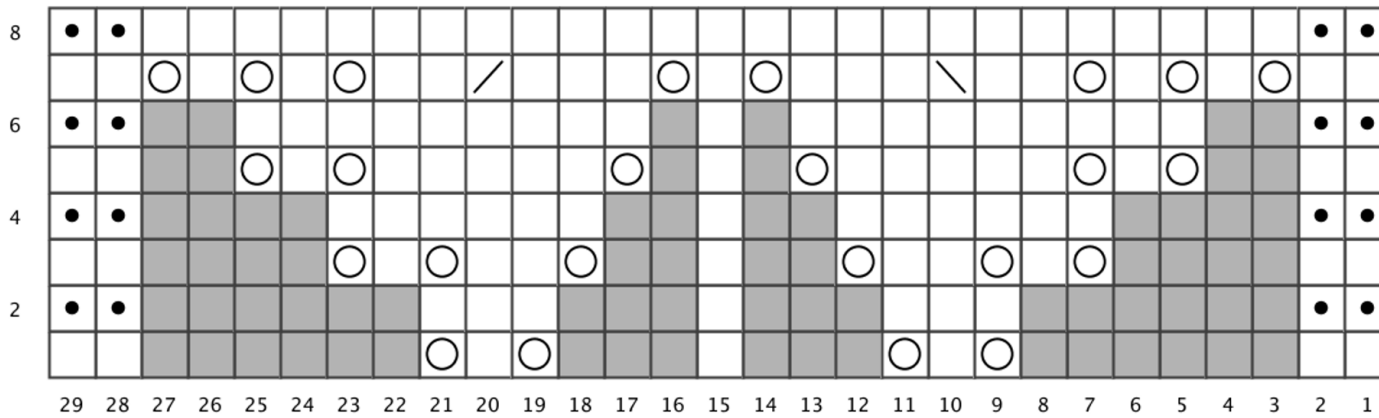
dec('d)	decrease(d)
k	knit
k2tog	knit 2 sts together (1 st dec'd)
meas	measures
p	purl
patt	pattern
pm	place maker
rep	repeat(ing)
RS	right side
sk2p	slip 1 st as if to k, k2tog, pass slipped st over k2tog (2 sts dec'd)
ssk	slip slip knit (1 st dec'd)
st(s)	stitch(es)
St st	Stockinette stitch: knit on RS rows, purl on WS rows
WS	wrong side
yo	yarn over

Razor Shell Shawlette

project continued

By Premier® Yarns Design Team

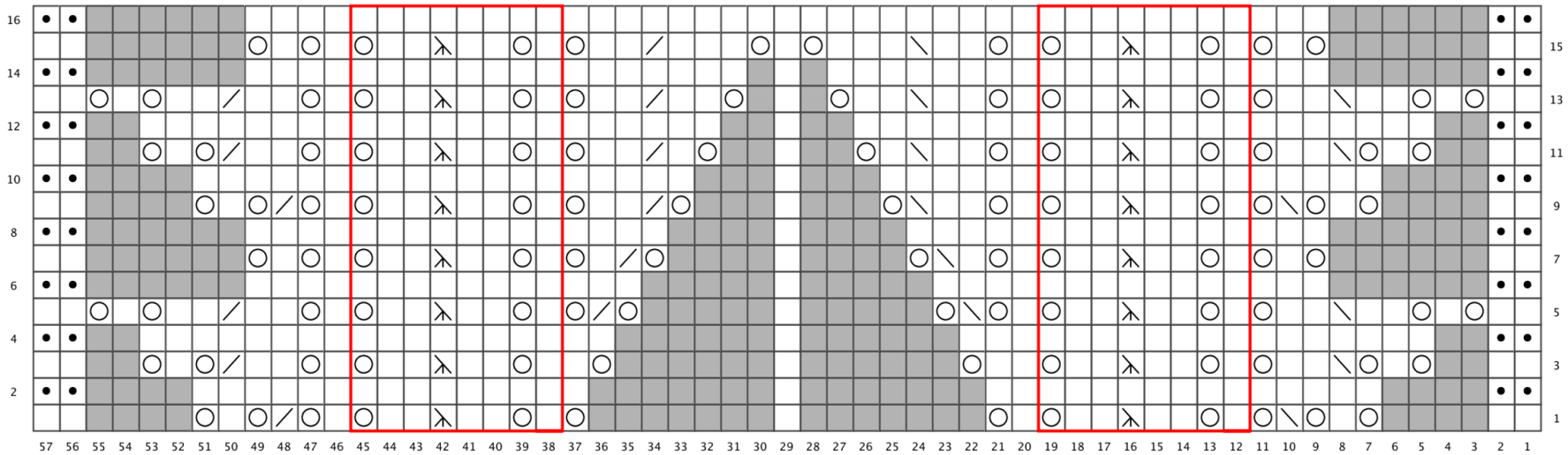
Setup Chart



Key

- RS: knit
WS: purl
- yo
- ssk
- k2tog
- RS: purl
WS: knit
- no stitch

Main Body Chart



Key

- RS: knit
WS: purl
- RS: purl
WS: knit
- no stitch
- yo
- ssk
- sk2p
- patt rep
- k2tog