

**SIZES**

XS/S (M/L, XL)
Shown in XS/S

FINISHED MEASUREMENTS

Across Back: 15 ½ (17, 22)"
Total Diameter When Flat: 43 (45 ¾, 52 ½)"

MATERIALS

Premier® Yarns Garden (100% micro acrylic; 3.5oz/100g 284yds/259m)

- #1076-06 Azalea – 4 (5, 7) balls

Needle/Hook: US Size 6 (4 mm) 16", 24", 32" and 40" circular needle and set of (4) double pointed knitting needles, US Size G-6 (4mm) crochet hook *or size needed to obtain gauge*

Notions: Tapestry needle, stitch markers, scissors, tape measure

GAUGE

22 sts x 28 rows = 4" in St st
Save time, check your gauge.

STITCH GUIDE

Magic Ring: Wrap yarn around your left middle finger twice, leaving a 6" tail. Insert hook under both strands and pull up a loop. Ch 1, and beg working directly into center of ring. (This ring can be tightened later by pulling on the yarn tail.) *Insert hk into the circle and pull up a lp. Yo and draw through one lp on hk (1 lp made); rep from * until there are 9 lps on the hk.

Inc Rnd: *Yo, k1; rep from * around.

Sugar Cube (Multiple of 6 sts)

Rnd 1: *Yo, k1, yo, ssk, k1, k2tog; rep from * around.

Rnds 2 and 6: Knit.

Rnd 3: *K3, yo, s2-k1-p2sso, yo; rep from * around.

Rnd 4: K to 1 st before end of rnd, place new beg of rnd marker.

Rnd 5: (remove old beginning of rnd marker) *Yo, ssk, k1, k2tog, yo, k1; rep from *.

Rnd 7: *K1, yo, sl 2-k1-p2sso, yo, k2; rep from * around to last 6 sts, k1, yo, sl 2-k1-p2sso, yo, k1, place new beg of rnd marker.

PATTERN NOTES

The pattern is written for the smallest size, with larger sizes in parenthesis. If only one number is given, it applies to all sizes.

The Sugar Cube stitch is available in both charted and written format. Choose which format you prefer. When following the chart, work all rounds from right to left.

The vest is worked in the round from the center out in the round. You may need to utilize more than one circular needle to work the rounds that have a lot of stitches.

VEST

Work **Magic Ring**. Place 3 sts each onto 3 dpns. Join in the rnd, being careful not to twist sts. Pm to mark beg of rnd. Knit 1 rnd. Work **Inc Rnd**. 18 sts. Knit 3 rnds. Work **Inc Rnd**. 36 sts. Knit 6 rnds. Work **Inc Rnd**. 72 sts.

Trumpet Vine Vest

Level: Intermediate

Trumpet Vine Vest

project continued

By Premier Yarns Design Team

First Lace Section

Knit 2 rnds. Work Rnds 1-7 of **Sugar Cube**. Knit 2 rnds. Change to 16" circular ndl. **Inc Rnd**. 144 sts.

Second Lace Section

Knit 2 rnds. Work Rnds 1-7 of **Sugar Cube. Knit 2 rnds.**

Next Rnd: *Yo, k2tog; rep from * around. Rep from ** to ** once more. Change to 24" circular ndl.

Work **Inc Rnd**. 288 sts. Change to 32" circular ndl.

SIZE XS/S ONLY

Third Lace Section

Knit 2 rnds. Work Rnds 1-3 of **Sugar Cube**.

Next Rnd (Shape Armholes): **Bind off 46 (-, -) sts, turn work, cable cast on 46 (-, -) sts, turn work,** knit 52 (-, -) sts; rep from ** to ** once more, k to end.

Work Rnds 5-7 of **Sugar Cube**. Knit 2 rnds.

Next Rnd: *Yo, k2tog; rep from * around.

Knit 2 rnds. Work Rnds 1-7 of **Sugar Cube. Knit 2 rnds. **Next Rnd:** *Yo, k2tog; rep from * around.** Rep from ** to ** once more. Knit 2 rnds. Work Rnds 1-7 of **Sugar Cube**. Knit 2 rnds.

Work **Inc Rnd**. 576 sts. Use both 32" and 40" circular ndl to hold all sts.

SIZE M/L ONLY

Third Lace Section

Knit 2 rnds. Work Rnds 1-7 of **Sugar Cube**. Knit 1 rnd.

Next Rnd (Shape Armholes): **Bind off - (49, -) sts, turn work, cable cast on - (49, -) sts, turn work,** knit - (56, -) sts; rep from ** to ** once more, k to end.

Next Rnd: *Yo, k2tog; rep from * around.

Knit 2 rnds. Work Rnds 1-7 of **Sugar Cube. Knit 2 rnds. **Next Rnd:** *Yo, k2tog; rep from * around.** Rep from ** to ** once more. Knit 2 rnds. Work Rnds 1-7 of **Sugar Cube**. Knit 2 rnds.

Work **Inc Rnd**. 576 sts. Use both 32" and 40" circular ndl to hold all sts.

SIZE XL ONLY

Third Lace Section

Knit 2 rnds. Work Rnds 1-7 of **Sugar Cube. Knit 2 rnds.

Next Rnd: *Yo, k2tog; rep from * around.**

Rep from ** to ** once more. Knit 2 rnds. Work Rnds 1-3 of **Sugar Cube**.

Next Rnd (Shape Armholes): **Bind off - (-, 52) sts, turn work, cable cast on - (-, 52) sts, turn work,** knit - (-, 60) sts; rep from ** to ** once more, k to end.

Work Rnds 5-7 of **Sugar Cube**. Knit 2 rnds.

Next Rnd: *Yo, k2tog; rep from * around. Knit 2 rnds.

Work Rnds 1-7 of **Sugar Cube**. Knit 2 rnds.

Inc Rnd. 576 sts. Use both 32" and 40" circular ndl to hold all sts.

ALL SIZES

Fourth Lace Section

Knit 2 rnds. Work Rnds 1-7 of **Sugar Cube. Knit 2 rnds.

Next Rnd: *Yo, k2tog; rep from * around.**

Rep from ** to ** 3 (4, 6) times more. K 2 rnds.

Picot Bind off

With crochet hk, sl the last st you knitted onto hk, *Ch 4, sl the next 3 sts on the left hand needle onto hk (all at once as if to work a k3tog), yo and pull through all 4 lps on hk; rep from * around entire piece. Cut yarn and fasten off.

FINISHING

Work a row of sc along the armhole openings. Weave in ends.

Abbreviations

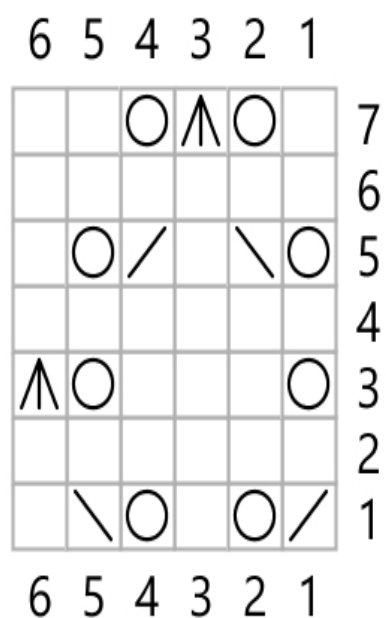
beg	begin(ning)
ch	chain
dpn	double pointed needle
hk	hook
inc	increase
k	knit
k2tog	knit two stitches together (1 st decreased)
k3tog	knit three stitches together (2 sts decreased)
lp	loop
ndl	needle
p	purl
pm	place marker
psso	pass slipped stitch over
rnd	round
sc	single crochet
sl	slip
ssk	slip slip knit (1 st decreased)
st(s)	stitch(es)
yo	yarn over

Trumpet Vine Vest

project continued

By Premier Yarns Design Team

Sugar Cube



Key

