



Gala Gift Bag

SIZE

One Size

FINISHED MEASUREMENTS

Circumference: 8½"

Height: 8"

MATERIALS

Premier® Yarns Gala (95% Polyester, 5% Metallic Polyester; 1.76oz/50g, 149yds/137m)

- 1 ball, shown in 2085-03 Green and 2085-04 Red

Needles: US Size 5 (3.75 mm) set of dpns or size needed to obtain gauge

Notions: Tapestry needle, stitch marker, ¼ - ½" ribbon (optional)

GAUGE

26 sts x 30 rnds = 4" in St st

Save time, check your gauge.

Skills/techniques used in this pattern:

- Knit stitches.
- Yarn over increases.
- Knitting small circumferences in the round.
- Ssk and sk2p decreases.
- Three-needle bind off.
- I-Cord (optional).

STITCH GUIDE

Cloverleaf Eyelet Pattern (multiple of 8 sts)

Rnd 1: Knit.

Even Rnds 2-12: Knit.

Rnd 3: *K4, yo, sk2p, yo, k1; rep from * to end.

Rnd 5: *K5, yo, ssk, k1; rep from * to end.

Rnd 7: Knit.

Rnd 9: *Yo, sk2p, yo, k5; rep from * to end.

Rnd 11: *K1, yo, ssk, k5; rep from * to end.
Rep Rnds 1-12 for patt.

Three-Needle Bind Off: Have each set of sts to join on its own needle. Hold needles together with right sides of work facing each other. Insert right hand needle into first st on front needle, then into first st on back needle and knit the two sts together. *Insert right hand needle into next st on front needle, then into next st on back needle and knit the two sts together. Pass first st over second to bind off 1 st; rep from * until all sts are bound off.

I-Cord: Cast on 3 sts, k3, *slide sts to opposite end of dpn. Bring the yarn across the WS to the beginning of the row. Knit 3 sts, place needle in left hand; rep from * until i-cord is desired length.

PATTERN NOTES

This Bag is worked from the top down in the round and the bottom is closed with a three needle bind off. An I-cord is made for or closure, or alternatively a length of ribbon can be used.

BAG

Cast on 56 sts, pm and join to work in the rnd, being careful not to twist sts. Work even in St st in the rnd for 1½".

Eyelet Rnd: *Ssk, yo; rep from * to end.

Beg with Rnd 1, work even in **Cloverleaf Eyelet Patt** until piece meas 8" from cast-on edge, end having just worked any rnd except 3, 5, 9, or 11.

Gala Gift Bag

project continued

By Premier® Yarns Design Team

With Bag still on needles, turn inside out, join and bind off all sts with **Three-Needle Bind Off**.

FINISHING

If desired, make 1 – 16” (or to desired length) **I-Cord** or cut 1 – 16” length of ribbon. Thread **I-Cord** or ribbon through Eyelet Rnd.

Weave in ends.

Abbreviations

dec(d) decrease(d)

k knit

patt pattern

pm place marker

rem remain(ing)

rep repeat(ing)

rnd(s) round(s)

sk2p slip 1 st as if to k, k2tog, pass slipped st over k2tog (2 sts dec'd)

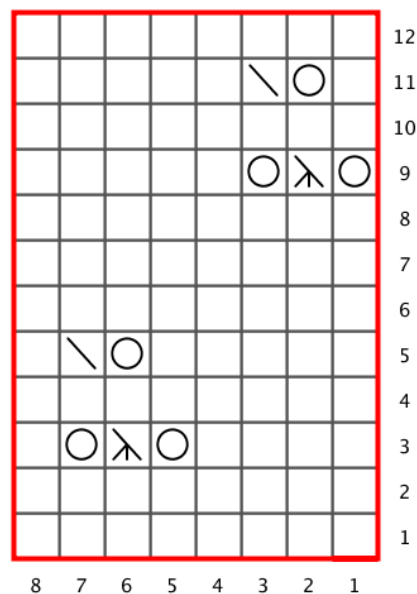
ssk slip slip knit (1 st dec'd)

st(s) stitch(es)

St st Stockinette stitch: knit every rnd.

yo yarn over

Chart



Key



knit



yo



ssk



sk2p



patt rep