



Pattern Collection: Accessories

Flurry Cowl

Designed by Rachel Brockman

SIZES

One Size

FINISHED MEASUREMENTS

Width: 12"

Circumference: 56½"

MATERIALS

Rozetti Cinema (70% wool, 25% nylon, 5% cashmere; 100g/109 yds)

- 401 White Sand – 4 skeins

Needles: US Size 10 (6 mm) 40" circular
or size needed to obtain gauge.

US Size 9 (5.5 mm) 40" circular

Notions: Tapestry needle, stitch markers, cable needle (cn)

GAUGE

14 sts x 19 rnds = 4" in Cable and Lace
patt with larger ndl

Save time check your gauge.

For questions about this pattern, please
contact patterns@universalyarn.com.



Knit. Relax. Smile. Repeat!

2019 © Universal Yarn, Inc.

All rights reserved.

www.universalyarn.com

This pattern may not be reproduced for business, trade or sale.

PATTERN NOTES

The Flurry Cowl is a beautifully detailed knit in deliciously chunky Cinema yarn. The winding cable and lace motif repeated throughout makes this a piece that can be easily dressed up or down depending on your needs for the day! Double it up or wear it draped for different effects.

This cowl is knit in the round from the bottom up and has a ribbed border.

SITCH GUIDE

3x3 Left Cross (LC): Sl next 3 sts to cn and hold in front, k3 from left ndl, k3 from cn.

Rib

(Multiple of 11 sts)

Rnd 1: * [P1, k3] 2 times, p2, k1; rep from * to end.

Rep Rnd 1 for patt.

Cable and Lace

(Multiple of 11 stitches)

Rnd 1: * Yo, ssk, k1, k2tog, yo, k6; rep from * to end.

Even Rnds 2-8: Knit.

Rnd 3: * K1, yo, S2KP2, yo, k1, 3x3 LC; rep from * to end.

Rnd 5: Rep Row 1.

Rnd 7: * K1, yo, S2KP2, yo, k7; rep from * to end.
Rep Rnds 1-8 for patt.

COWL

With smaller ndl, cast on 198 sts. PM and join to knit in the rnd, being careful not to twist sts.

Lower Edge

Note: You may wish to place markers between each repeat to help stay on track.

Rnd 1: Work Rnd 1 of Rib patt to end. Patt will be repeated 18 times across each rnd.

Rnds 2-6: Rep Rnd 1. Change to larger ndl.

Main Cowl

Note: You may wish to place markers between each repeat to help stay on track.

Rnd 1: Work Rnd 1 of Cable and Lace patt to end. Patt will be repeated 18 times across each rnd.

Rnd 2: Work Rnd 2 of Cable and Lace patt to end.

Cont as est'd through Rnd 8 of Cable and Lace patt, then rep Rnds 1-8 of patt, 4 more times, then rep Rnds 1-4, 1 more time. Change to smaller ndl.

Upper Edge

Note: You may wish to place markers between each repeat to help stay on track.

Rnd 1: Work Rnd 1 of Rib patt to end. Patt will be repeated 18 times across each rnd.

Rnds 2-6: Rep Rnd 1. Bind off all sts in patt.

FINISHING

Gently wash and block to finished measurements. Weave in ends.

Abbreviations

cn	cable needle
cont	continue
est'd	established
k	knit
k2tog	knit 2 stitches together (1 st dec'd)
LC	left cross
ndl	needle
p	purl
patt	pattern
pm	place marker
rep	repeat
rnd(s)	round(s)
sl	slip
S2KP2	slip 2 stitches as if to knit 2 together, knit 1, pass 2 slipped stitches over knit stitch; centered double decreases
ssk	slip next 2 sts individually knitwise, slip them back to left needle in this position, knit them together through the back loops (1 st dec'd)
st(s)	stitches
tog	together
yo	yarn over

Knit. Relax. Smile. Repeat!

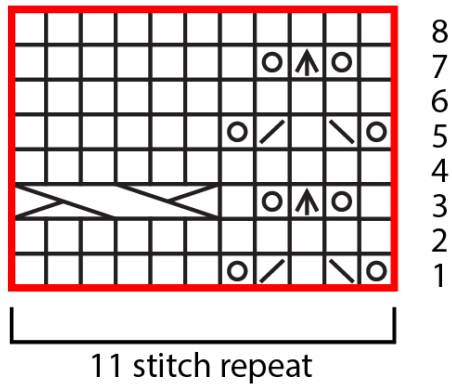
2019 © Universal Yarn, Inc.

All rights reserved.

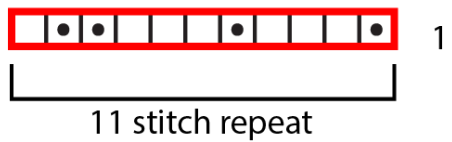
www.universalyarn.com

This pattern may not be reproduced for business, trade or sale.









Cable and Lace



Rib



Key

-  pattern repeat
-  knit
-  purl
-  yo
-  ssk
-  k2tog
-  S2KP2
-  3x3 LC

Knit. Relax. Smile. Repeat!

2019 © Universal Yarn, Inc.

All rights reserved.

www.universalyarn.com

This pattern may not be reproduced for business, trade or sale.