



Pattern Collection: Children



Flower Fence Sweater

Designed by Rachel Brockman

SIZES

6 mo (12 mo, 18-24 mo, 2-4 yr, 4-6 yr)

Shown in 18-24 mo size.

FINISHED MEASUREMENTS

Chest Circumference: 17¼ (19½, 21½, 23¾, 25¾)''

Length: 10½ (11½, 12½, 13½, 15)''

MATERIALS

Fibra Natura Donnina (100% extrafine superwash merino wool, 50g/180 yds)

- 216 Blackberry (A) – 1 (1, 1, 2, 2) balls
- 212 Orchid Organza (B) – 1 ball
- 210 Sweet Pea (C) – 1 ball
- 209 Pink Whisper (D) – 1 ball
- 210 Vanilla (E) – 1 ball

Needles: US Size 5 (3.75 mm) 16-24'' circular and set of dpns or your preferred needle for knitting small circumferences *or size needed to obtain gauge*

US Size 4 (3.5 mm) 16-24'' circular and set of dpns or your preferred needle for knitting small circumferences.

US Size 3 (3.25 mm) 16'' circular and set of dpns or your preferred needle for knitting small circumferences.

Notions: Tapestry needle, stitch markers, stitch holders or waste yarn.

Knit. Relax. Smile. Repeat!

2019 © Universal Yarn, Inc.

All rights reserved.

www.universalyarn.com

This pattern may not be reproduced for business, trade or sale.

GAUGE

26 sts x 30 rnds = 4" in Flower patt with largest ndl

26 sts x 30 rnds = 4" in Stockinette St with medium ndl

Save time check your gauge.

For questions about this pattern, please contact patterns@universalyarn.com.

PATTERN NOTES

Our vibrant and soft Donnina yarn knits like a dream in the adorable Flower Fence Sweater, which is a perfect design for a growing little one. A graphic colorwork pattern of stripes and flowers adorn this pullover and the tonal colorways are sure to create lots of smiles every time it's worn.

This sweater is worked in the round from the bottom up. The front and back are separated at the underarm and worked flat. Shoulders are joined with a three-needle bind-off. The sleeves are worked separately in the round from the bottom up and sewn to the body. Neck stitches are picked up and worked in the round.

STITCH GUIDE

K1, P1 Rib

(Even number of sts)

Rnd 1: * K1, p1; rep from * to end.

Rep Rnd 1 for patt.

BODY

Hem

With smallest circ ndl and color A, cast on 112 (126, 140, 154, 168) sts. PM and join to knit in the round, being careful not to twist. Work in K1, P1 Rib for 1¾ (1¾, 2, 2, 2)" from cast-on edge. Change to largest circ ndl.

Establish Pattern

Note 1: You may wish to place markers between pattern repeats to help you stay on track.

Note 2: Change colors as indicated on chart.

Rnd 1: Work Rnd 1 of Flower patt to end. Patt will be repeated 8 (9, 10, 11, 12) times across each rnd.

Cont as est'd through Rnd 28 of Flower patt. Change to medium circ ndl.

Main Body

Note 1: Change colors as indicated on chart.

Note 2: Please read through entire section before proceeding. Front and Back are separated during Stripe pattern.

Rnd 1: Work Rnd 1 of Stripe patt to end.

Cont as est'd through Rnd 14 of patt, then continuously rep Rnds 1-14 of patt.

At the same time, when piece meas 6½ (7, 7½, 8, 9)" from cast-on edge, separate Front and Back as fall:

Separation Row (RS): Knit across 56 (63, 70, 77, 84) Front sts, turn. Place 56 (63, 70, 77, 84) Back sts on holder or waste yarn.

Front

Cont in Stripe patt until piece meas 2¾ (3¼, 3½, 4, 4½)" from Front/Back separation, ending with a WS row.

Shape Neck

Note: Maintain Stripe patt throughout neck shaping.

Row 1 (RS): Cont as est'd over 25 (28, 30, 32, 34) Left Front sts, bind off 6 (7, 10, 13, 16) Front Neck sts, cont as est'd over 25 (28, 30, 32, 34) Right Front sts. Place Left Front sts on holder or waste yarn.

Right Front

Work a WS row even as est'd to end.

Row 1 (RS): Bind off 6 (6, 7, 7, 7) sts, cont as est'd to end – 19 (22, 23, 25, 27) sts rem.

WS Rows 2-6: Cont as est'd to end.

Row 3: Bind off 4 (4, 4, 5, 5) sts, cont as est'd to end – 15 (18, 19, 20, 22) sts rem.

Row 5: Bind off 3 sts, cont as est'd end – 12 (15, 16, 17, 19) sts rem.

Row 7: Bind off 2 (2, 1, 1, 1) sts, cont as est'd to end – 10 (13, 15, 16, 18) sts rem.

Cont even as est'd, if necessary, until piece meas 4 (4½, 5, 5½, 6)" from Front/Back separation, ending with a WS row. Place sts on holder or waste yarn.

Knit. Relax. Smile. Repeat!

2019 © Universal Yarn, Inc.

All rights reserved.

www.universalyarn.com

This pattern may not be reproduced for business, trade or sale.

Left Front

Return Left Front sts to ndl.

Row 1 (WS): Bind off 6 (6, 7, 7, 7) sts, cont as est'd to end – 19 (22, 23, 25, 27) sts rem.

RS Rows 2-6: Cont as est'd to end.

Row 3: Bind off 4 (4, 4, 5, 5) sts, cont as es't to end – 15 (18, 19, 20, 22) sts rem.

Row 5: Bind off 3 sts, cont as est'd end – 12 (15, 16, 17, 19) sts rem.

Row 7: Bind off 2 (2, 1, 1, 1) sts, cont as est'd to end – 10 (13, 15, 16, 18) sts rem.

Cont even as est'd, if necessary, until piece meas 4 (4½, 5, 5½, 6)" from Front/Back separation, ending with a WS row. Place sts on holder or waste yarn.

Back

Return Back sts to ndl. Work even in Stripe patt as est'd until piece meas 4 (4½, 5, 5½, 6)" from Front/Back separation, ending with a WS row.

Next Row (RS): Cont as est'd over 10 (13, 15, 16, 18) Left Back sts, bind off 36 (37, 40, 45, 48) Back Neck sts, cont as est'd over 10 (13, 15, 16, 18) Right Back sts.

With RS facing tog, join Left Front and Left Back shoulders and Right Front and Right Back shoulders using the three-needle bind-off.

SLEEVES

Cuff

With smallest dpns and color A, cast on 28 (28, 42, 42, 42) sts. PM and join to knit in the rnd, being careful not to twist. Work in K1, P1 Rib until piece meas 1" from cast-on edge.

Change to largest dpns.

Establish Pattern

Note 1: Change colors as indicated on chart.

Note 2: You may wish to place markers between pattern repeats to help you stay on track.

Rnd 1: Work Rnd 1 of Sleeve Flower patt to end. Patt will be repeated 2 (2, 3, 3, 3) times across each rnd.

Cont as est'd through Rnd 14 of Flower patt.

Change to medium dpns.

Shape Sleeve

Note 1: Change colors as indicated on chart.

Note 2: Read through the entire section before proceeding. Sleeve shaping begins during Stripe pattern.

Rnd 1: Work Rnd 1 of Stripe patt to end.

Cont as est'd through Rnd 14 of Stripe patt, then continuously rep Rnds 1-14 of patt.

At the same time, after working Rnd 1 of Stripe pattern, shape sleeve as foll:

Inc Rnd: K1, m1R, cont as es'd to last st, m1L, k1 – 2 sts inc'd, 30 (30, 44, 44, 44) sts.

Rep Inc Rnd every 1 (1, 2, 2, 2) rnd(s), 5 (3, 8, 8, 9) more times, then rep Inc Rnd every 2 (2, 4, 4, 4) rnds, 6 (11, 3, 6, 8) times – 22 (28, 22, 28, 34) sts inc'd, 52 (58, 66, 72, 78) sts.

Work even as est'd until piece meas 6½ (7½, 8, 9½, 11)" from cast-on edge. Bind off all sts.

FINISHING

Gently wash and block to finished measurements. Weave in ends. Sew sleeves to body.

Neck Edging

With smallest dpns and color A, with RS facing, and beg at Right Shoulder, pick up and knit 36 (37, 40, 45, 48) sts evenly along Back Neck edge and 36 (37, 42, 47, 50) sts evenly along Front Neck edge – 72 (74, 82, 92, 98) sts. Work in K1, P1 Rib until piece meas 1" from picked-up edge. Bind off all sts in patt. Weave in rem ends.

Knit. Relax. Smile. Repeat!

2019 © Universal Yarn, Inc.

All rights reserved.

www.universalyarn.com

This pattern may not be reproduced for business, trade or sale.

Abbreviations

circ	circular
cont	continue
dpn(s)	double pointed needle(s)
est'd	established
folll	follow
inc('d)	increase(d)
k	knit
m1L	insert left needle from front to back under horizontal strand of yarn lying between st just worked and next st, knit or purl this st through the back loop (1 st inc'd)
m1R	insert left needle from back to front under horizontal strand of yarn lying between st just worked and next st, knit or purl this st through the front loop (1 st inc'd)

meas	measures
ndl	needle
p	purl
patt	pattern
pm	place marker
rem	remain(ing)
rep	repeat
rnd	round
RS	right side
st(s)	stitch(es)
tog	together
WS	wrong side



Knit. Relax. Smile. Repeat!

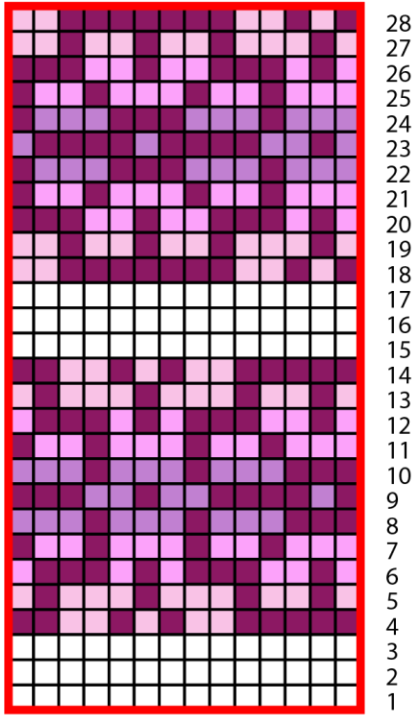
2019 © Universal Yarn, Inc.

All rights reserved.

www.universalyarn.com

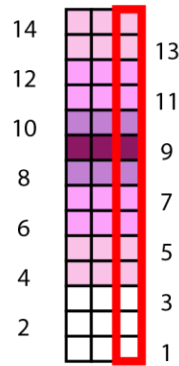
This pattern may not be reproduced for business, trade or sale.

Flower

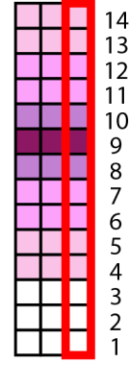


14 stitch repeat

Stripes (Worked Flat)



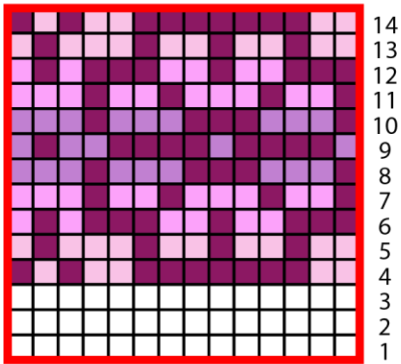
Stripes (Worked In The Round)



Key

- Pattern Repeat
- Color A
- Color B
- Color C
- Color D
- Color E

Sleeve Flower



14 Stitch Repeat

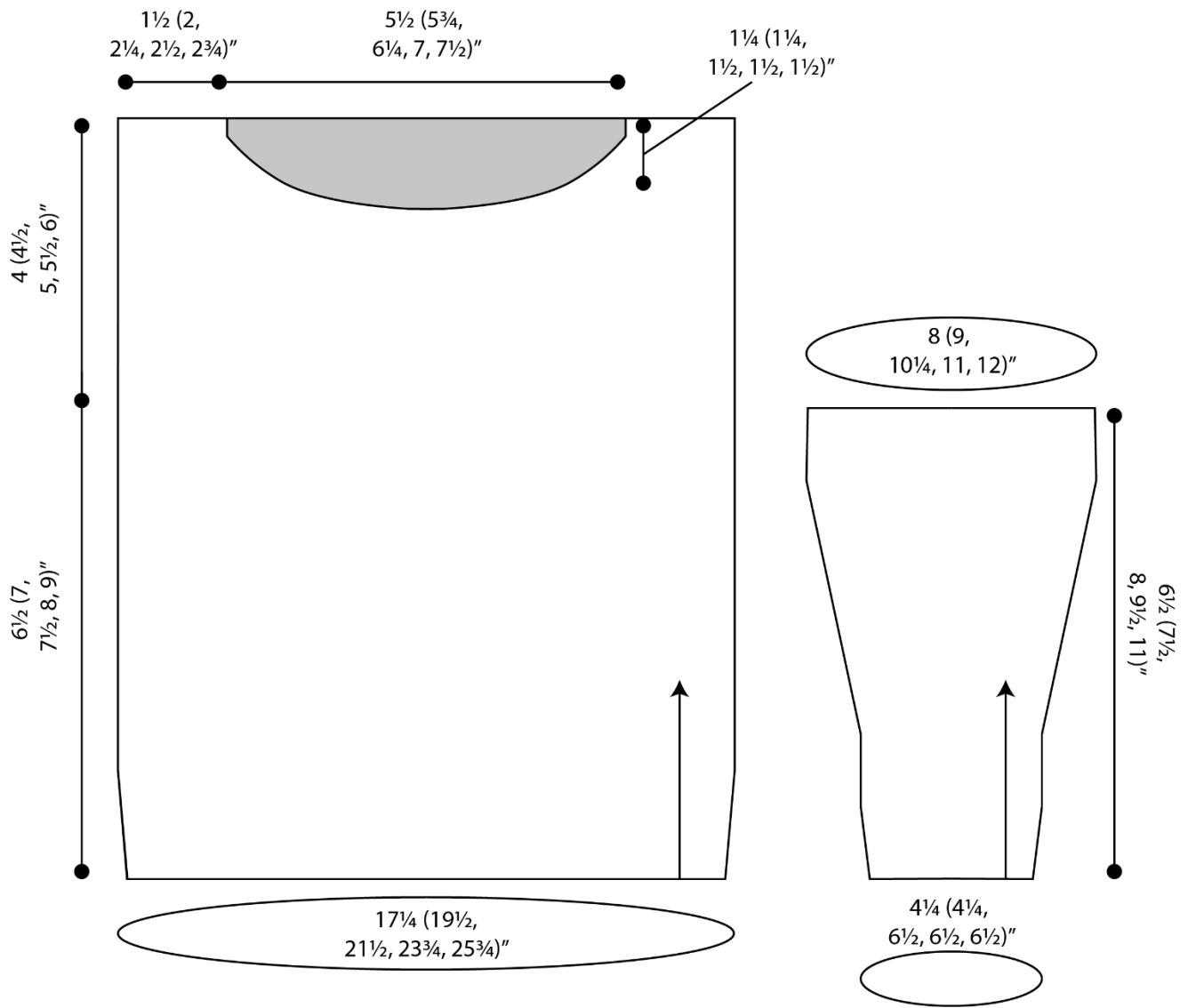
Knit. Relax. Smile. Repeat!

2019 © Universal Yarn, Inc.

All rights reserved.

www.universalyarn.com

This pattern may not be reproduced for business, trade or sale.



Knit. Relax. Smile. Repeat!

2019 © Universal Yarn, Inc.

All rights reserved.

www.universalyarn.com

This pattern may not be reproduced for business, trade or sale.