



Pattern Collection: Accessories



Featherdown Shawl

Designed by Rachel Brockman

SIZES

One Size

FINISHED MEASUREMENTS

Wingspan: 50"

Depth at Center: 25"

MATERIALS

Rozetti Yarns *Alaska* (44% acrylic, 26% polyamide, 15% alpaca, 15% superwash fine merino wool; 50g/246 yds)

- 904 Frozen Pond (MC) – 2 balls
- 901 Icicle (CC) – 1 ball

Needles: US Size 6 (4 mm) 40" circular *or size needed to obtain gauge*

Notions: Tapestry needle, stitch marker

GAUGE

20 sts x 32 rows = 4" in Left or Right Lace patterns

Save time, check your gauge.

Knit. Relax. Smile. Repeat!

2018 © Universal Yarn, Inc.

All rights reserved.

www.universalyarn.com

This pattern may not be reproduced for business, trade or sale.

PATTERN NOTES

Featherlight and soft, Alaska perfectly complements the lacework in this shawl. Featherdown is a triangular shawl worked from the top-down, beginning with a garter-tab cast-on. The shawl is finished with a handsome applied lace border in a contrasting color.

STITCH GUIDE

Left Lace

(even number of sts)

RS Rows 1-5: K1, * yo, k2tog; rep from * to end.

WS Rows 2-6: Purl to end.

RS Rows 7-9: Knit to end.

WS Rows 8-10: Knit to end.

Rep Rows 1-10 for patt.

Right Lace

(even number of sts)

RS Rows 1-5: K1, * yo, ssk; rep from * to end.

WS Rows 2-6: Purl to end.

RS Rows 7-9: Knit to end.

WS Rows 8-10: Knit to end.

Rep Rows 1-10 for patt.

Lace Border

(begins with 20 sts)

Row 1 (RS): Sl 1 pwise wyif, k1, [yo, ssk] 4 times, k3, k2tog, k3, yo, k2 – 21 sts.

WS Rows 2-4 (WS): Yo, p2tog, purl to last st, k2tog (1 edge st consumed).

Row 3: Sl 1 pwise wyif, k2, [yo, ssk] 3 times, k3, k2tog, yo, k5, yo, k2 – 22 sts.

Row 5: Sl 1 pwise wyif, k1, [yo, ssk] 3 times, k3, k2tog, yo, ssk, k2tog, [yo] 3 times, ssk, k1, yo, k2 – 23 sts.

Row 6: Yo, p2tog, p3, [p1, k1, p1] into 3 yo sts, purl to last st, k2tog (1 edge st consumed).

Row 7: Sl 1 pwise wyif, k2, [yo, ssk] 3 times, k4, yo, ssk, k3, k2tog, yo, k2tog, k1 – 22 sts rem.

WS Rows 8-12: Yo, p2tog, purl to last st, k2tog (1 edge st consumed).

Row 9: Sl 1 pwise wyif, k1, [yo, ssk] 4 times, k4, yo, ssk, k1, k2tog, yo, k2tog, k1 – 21 sts rem.

Row 11: Sl 1 pwise wyif, k2, [yo, ssk] 4 times, k4, yo, sl 2-k1-p2sso, yo, k2tog, k1 – 20 sts rem.

Rep Rows 1-12 for patt.



SHAWL

Starting Tab With MC, cast on 3 sts. Knit 7 rows in garter st.

Set-up row 1 (RS): K3, rotate work 90 degrees, pick up and knit 3 sts from side of Tab, pick up and knit 3 sts from cast-on edge – 9 sts.

Set-up row 2 (WS): K3, pm, k1, pm, p1, pm, k1, pm, k3.

Set-up row 3: K3, sl m, yo, k1, yo, sl m, k1, sl m, yo, k1, yo, sl m, k3 – 4 sts inc'd, 13 sts.

Set-up row 4: K3, sl m, purl to m, sl m, p1, sl m, purl to m, sl m, k3.

Establish Lace

Row 1 (RS): K3, sl m, yo, work Row 1 of Left Lace patt to m, yo, sl m, k1, sl m, yo, work Row 1 of Right Lace patt to m, yo, sl m, k3 – 4 sts inc'd, 17 sts.

Row 2 (WS): K3, sl m, work Row 2 of Right Lace patt to m, sl m, p1, sl m, work Row 2 of Left Lace patt to m, sl m, k3.

Knit. Relax. Smile. Repeat!

2018 © Universal Yarn, Inc.

All rights reserved.

www.universalyarn.com

This pattern may not be reproduced for business, trade or sale.

Row 3: K3, sl m, yo, work next row Left Lace patt to m, yo, sl m, k1, sl m, yo, work next row Right Lace patt to m, yo, sl m, k3 – 4 sts inc'd, 21 sts.

Row 4: K3, sl m, work next row Right Lace patt to m, sl m, p1, sl m, work next row Left Lace patt to m, sl m, k3.

Rep Rows 3-4, 53 more times, ending with Row 10 of patt – 212 sts inc'd, 233 sts.

Border

Note: On every WS Row of Edging, 1 st is consumed from the body of the shawl.

Row 1 (RS): Knit to end, removing markers as you come to them. Break MC do not turn work. With RS facing and CC, cast on 22 sts using the Backwards Loop method. Turn work.

Row 2 (WS): Sl 1 pwise wyif, knit to last Border st, k2tog (1 body st consumed), turn work.

Row 3 (RS): Work Row 9 of Lace Border patt to end.

Row 4: Work Row 10 of Lace Border patt to end – 1 body st consumed.

Row 5: Work Row 11 of Lace Border patt to end.

Row 6: Work Row 12 of Lace Border patt to end – 1 body st consumed.

Cont as est'd, working Rows 1-12 of Lace Border patt 38 times, then work Rows 1-4 of Lace Border patt 1 more time – 1 Body st rem.

Next Row (RS): Sl 1 pwise wyif, knit to end.

Next Row (WS): Knit to last st, k2tog – last Body st consumed. Bind off rem Border sts.

FINISHING

Weave in ends but do not trim. Wet or steam block, stretching to enhance lace. Once piece is fully dry, trim ends close to work.

Abbreviations

CC	contrast color
cont	continue
est'd	established
inc('d)	increase(d)
k	knit
k2tog	knit 2 stitches together (1 st dec'd)
m	marker
MC	main color
ndl	needle
p	purl
p2tog	purl 2 sts together (1 st dec'd)
patt	pattern
pm	place marker
pssso	pass slipped stitch(es) over
pwise	purlwise
rem	remain(ing)
rep	repeat
RS	right side
sl	slip
ssk	slip next 2 sts individually knitwise, slip them back to left needle in this position, knit them together through the back loops (1 st dec'd)
st(s)	stitch(es)
WS	wrong side
wyif	with yarn held in front
yo	yarn over

Knit. Relax. Smile. Repeat!

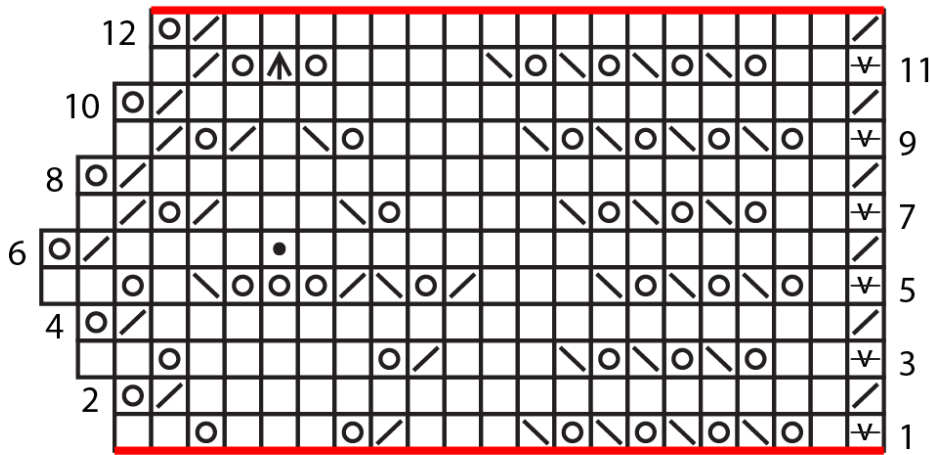
2018 © Universal Yarn, Inc.

All rights reserved.

www.universalyarn.com

This pattern may not be reproduced for business, trade or sale.

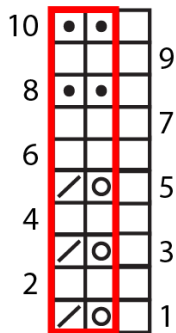
Lace Border



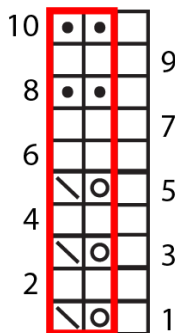
Key

- pattern repeat
- knit on RS, purl on WS
- purl on RS, knit on WS
- ▽ sl 1 pwise wyif
- yo
- / ssk
- / k2tog on RS, p2tog on WS
- ▲ sl 2, k1, p2sso

Left Lace



Right Lace



Knit. Relax. Smile. Repeat!

2018 © Universal Yarn, Inc.

All rights reserved.

www.universalyarn.com

This pattern may not be reproduced for business, trade or sale.