

**SIZE**

One Size

FINISHED MEASUREMENTS

Circumference: 15"

Height: 13¼"

MATERIALS

Premier® Yarns Anti-Pilling® Everyday®

Worsted (100% Anti-Pilling Acrylic; 3.5oz/100g, 180yds/165m)

- 100-07 Really Red or 100-48 Quiet Blue – 1 ball

Premier® Yarns Glitter Thread (100% Metallized Polyester; .35oz/10g, 1093yds/1000m)

- 2087-14 Red or 2087-18 Ice Blue – 1 spool

Needles: US Size 9 (5.5 mm) set of dpns *or size needed to obtain gauge*

Notions: Tapestry needle, stitch marker, ¼ - ½" ribbon (optional)

GAUGE

15 sts x 22 rnds = 4" in pattern with yarn and thread held together

Save time, check your gauge.

Skills/techniques used in this pattern:

- Knit stitches.
- Yarn over increases.
- Knitting small circumferences in the round.
- Ssk and sk2p decreases.
- Working with 2 strands held together.
- Three-needle bind off.
- I-Cord (optional).

STITCH GUIDE

Cloverleaf Eyelet Pattern (*multiple of 8 sts*)

Rnd 1: Knit.

Even Rnds 2-12: Knit.

Rnd 3: *K4, yo, sk2p, yo, k1; rep from * to end.

Rnd 5: *K5, yo, ssk, k1; rep from * to end.

Rnd 7: Knit.

Rnd 9: *Yo, sk2p, yo, k5; rep from * to end.

Rnd 11: *K1, yo, ssk, k5; rep from * to end.

Rep Rnds 1-12 for patt.

Three-Needle Bind Off: Have each set of sts to join on its own needle. Hold needles together with right sides of work facing each other. Insert right hand needle into first st on front needle, then into first st on back needle and knit the two sts together. *Insert right hand needle into next st on front needle, then into next st on back needle and knit the two sts together. Pass first st over second to bind off 1 st; rep from * until all sts are bound off.

I-Cord: Cast on 3 sts, k3, *slide sts to opposite end of dpn. Bring the yarn across the WS to the beginning of the row. Knit 3 sts, place needle in left hand; rep from * until i-cord is desired length.

PATTERN NOTES

This Bag is worked from the top down in the round with 1 strand of yarn and 1 strand of thread held together and the bottom is closed with a three-needle bind off. An I-cord is made for or closure, or alternatively a length of ribbon can be used.

Medium Eyelet Gift Bag

Medium Eyelet Gift Bag

By Premier® Yarns Design Team

project continued

BAG

With yarn and thread held together, cast on 56 sts, pm and join to work in the rnd, being careful not to twist sts. Work even in **St st in the Rnd** for 2".

Eyelet Rnd: *Ssk, yo; rep from * to end.

Work even in **Cloverleaf Eyelet Patt** until piece measures 13¼" from cast-on edge, end having just worked any rnd except 3, 5, 9, or 11.

With Bag still on needles, turn inside out, join and bind off all sts with **Three-Needle Bind Off**.

FINISHING

If desired, make 1 – 30" (or to desired length) **I-Cord** with yarn and thread held together or cut 1 – 30" length of ribbon. Thread **I-Cord** or ribbon through Eyelet Rnd.

Weave in ends.

Abbreviations

dec('d) decrease(d)

k knit

k2tog knit 2 sts together (1 st dec'd)

patt pattern

pm place marker

rem remain(ing)

rep repeat(ing)

rnd(s) round(s)

sk2p slip 1 st as if to k, k2tog, pass slipped st over k2tog (2 sts dec'd)

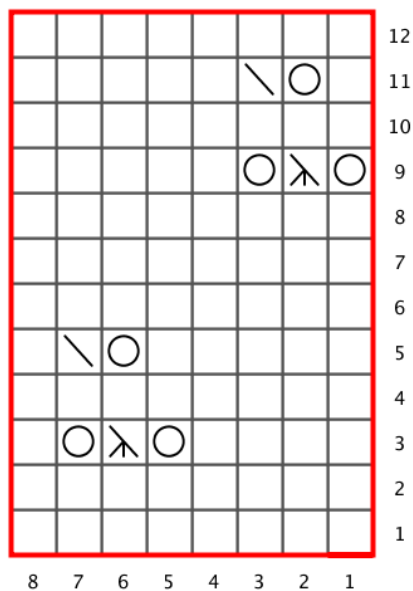
ssk slip slip knit (1 st dec'd)

st(s) stitch(es)

St st Stockinette stitch: knit every rnd.

yo yarn over

Cloverleaf Eyelet Chart



Key



knit



yo



ssk



sk2p



patt rep