



# Tidewater Throw

Level: Intermediate

## FINISHED MEASUREMENTS

48" x 48"

## MATERIALS

Premier® Yarns *Couture Home* (86% Acrylic, 14% Polyester; 9.8 oz/280g, 245 yds/224 m)

- #1101-03 Tidewater – 5 balls

**Needle:** US Size 17 (12 mm) 32" circular needle or size needed to obtain gauge

**Notions:** Tapestry needle

## GAUGE

8 sts x 12 rows = 4" in St st

**Save time, check your gauge.**

## STITCH GUIDE

**Wave Pattern** (multiple of 16 sts + 5)

**Row 1 (RS):** P2, \*k1, yo, k6, s2kp, k6, yo; rep from \* to last 3 sts, k1, p2.

**WS Rows 2-14:** K2, purl to last 2 sts, k2.

**Row 3:** P2, \*k2, yo, k5, s2kp, k5, yo, k1; rep from \* to last 3 sts, k1, p2.

**Row 5:** P2, \*k3, yo, k4, s2kp, k4, yo, k2; rep from \* to last 3 sts, k1, p2.

**Row 7:** P2, \*k4, yo, k3, s2kp, k3, yo, k3; rep from \* to last 3 sts, k1, p2.

**Row 9:** P2, \*k5, yo, k2, s2kp, k2, yo, k4; rep from \* to last 3 sts, k1, p2.

**Row 11:** P2, \*k6, yo, k1, s2kp, k1, yo, k5; rep from \* to last 3 sts, k1, p2.

**Row 13:** P2, \*k7, yo, s2kp, yo, k6; rep from \* to last 3 sts, k1, p2.

**Row 15:** Purl.

**Row 16:** Knit.

Rep Rows 1-16 for patt.

## THROW

Cast on 101 sts. Work 2 rows in Garter st.

Work in **Wave Pattern** until piece measures approximately 46", ending with Row 16 of patt.

Work 2 rows in Garter st. Bind off.

## FINISHING

Weave in ends.

## Abbreviations

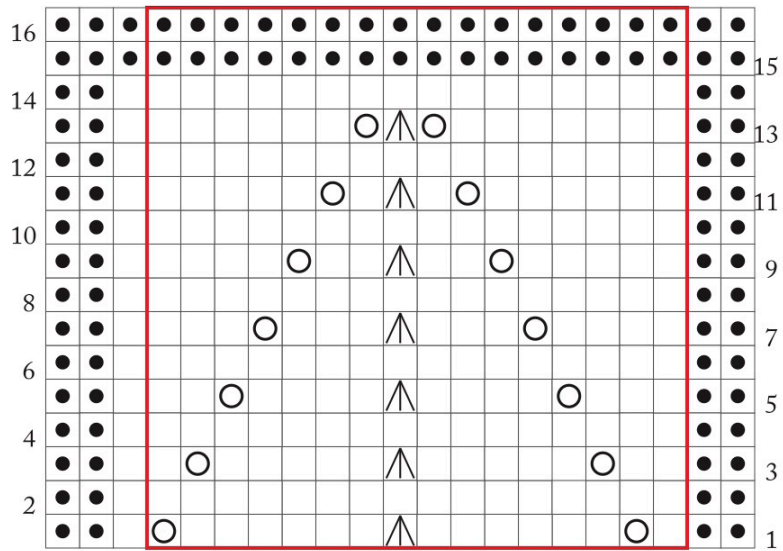
<b>Garter st</b>	Knit every row.
<b>k</b>	knit
<b>p</b>	purl
<b>rep</b>	repeat(ing)
<b>RS</b>	right side
<b>s2kp</b>	slip 2 sts together as if to k, k1, pass both slipped sts over
	knit st
<b>st(s)</b>	stitch(es)
<b>WS</b>	wrong side
<b>yo</b>	yarn over



# Tidewater Throw

project continued

By Premier Yarns Design Team



Key

- Knit on RS; Purl on WS
- Purl on RS; Knit on WS
- Yarnover
- S2kp

