



Seashells Coverup

SIZES

XS/S (M/L, 1X/2X, 3X/4X, 5X)

Shown in 1X/2X size.

FINISHED MEASUREMENTS

Width: 37¼ (42¾, 48, 53¼, 58¾)''

Length: 30¼ (31½, 32¾, 34, 35¼)'' from shoulder

MATERIALS

Premier® Yarns Cotton Sprout™ Speckles (100% Cotton; 3 oz/85g, 194yds/178m)

- 2086-09 Wildflowers – 5 (6, 6, 7, 8) balls

Hook: US Size 7 (4.5 mm) or size needed to obtain gauge

Notions: Tapestry needle

GAUGE

2 patt reps = 5'' wide; 6 patt rows = 4'' tall

Save time, check your gauge.

Skills/techniques used in this pattern:

- Lace patterning.
- Single crochet, double crochet, chains, foundation half double crochet, and cluster stitches.
- Mattress stitch seaming.

STITCH GUIDE

Foundation Half Double Crochet (Fhdc) – ch 3, yo, insert hook into 3rd ch from hook, yo, pull up loop (3 loops on hook), yo, pull through 1 loop (1 ch made), yo, draw through all loops on hook (1 foundation half double crochet made). *Yo, insert hook under the 2 loops of the chain at base of last st, pull up loop, yo, draw through 1 loop, yo, draw through all loops on hook; rep from * to desired number of Fhdc.

2dccl - 2 Double Crochet Cluster - [Yo and insert hook into st indicated, pull up a loop, yo and pull through 2 loops] 2 times, yo and pull through all loops on hook.

Exploded Shells (begins with mult of 10 sts + 1)

Row 1 (RS): Ch 1, sc in first 2 sts, * ch 3, sk 2 sts, **2dccl** in next st, ch 1, sk 1 st, **2dccl** in next st, ch 3, sk 2 sts, sc in next st, ch 1, sk 1 st, sc in next st; rep from * to last 9 sts, ch 3, sk 2 sts, **2dccl** in next st, ch 1, sk 1 st, **2dccl** in next st, ch 3, sk 2 sts, sc in last 2 sts, turn.

Row 2 (WS): Ch 4 (counts as dc + ch 1), dc in same st, ch 3, sc in ch-1 sp bet 2dccl, ch 3, * (dc, ch 1, dc, ch 1, dc) in ch-1 sp bet sc, ch 3, sc in ch-1 sp bet **2dccl**, ch 3; rep from * to last sc, (dc, ch 1, dc) in last sc, turn.

Row 3: Ch 3 (counts as dc), **2dccl** in ch-1 sp, * ch 3, sc in ch-3 sp, ch 1, sc in next ch-3 sp, ch 3, **2dccl** in ch-1 sp, ch 1, **2dccl** in next ch-1 sp; rep from * to last 2 ch-3 sps, ch 3, sc in ch-1 sp, ch 1, sc in next ch-3 sp, ch 3, **2dccl** in ch-1 sp, dc in last dc, turn.

Row 4: Ch 1, sc in dc, ch 3, (dc, ch 1, dc, ch 1, dc) in ch-1 sp bet sc, * ch 3, sc in ch-1 sp bet **2dccl**, ch 3, (dc, ch 1, dc, ch 1, dc) in ch-1 sp bet sc; rep from * to last dc, ch 3, sc in last dc, turn.

Row 5: Ch 1, sc in first sc, sc in ch-3 sp, * ch 3, **2dccl** in ch-1 sp, ch 1, **2dccl** in next ch-1 sp, ch 3, sc in ch-3 sp, ch 1, sc in next ch-3 sp; rep from * to last 3 dc & ch-1 sps, ch 3, **2dccl** in ch-1 sp, ch 1, **2dccl** in next ch-1 sp, ch 3, sc in ch-3 sp, sc in last sc, turn.

Rep Rows 2-5 for patt.

PATTERN NOTES

This garment is worked in two pieces that are joined together. Seams are sewn for front and back center and along the sides, leaving upper

Seashells Coverup

By Premier® Yarns Design Team

project continued

portions unsewn for neck opening and armholes.

COVERUP

First Side

Fhdc 241 (251, 261, 271, 281). Work Rows 1-5 of **Exploding Shells** patt, then rep Rows 2-5, 5 (6, 7, 8, 9) times, then rep Rows 2-4, one more time. Piece measures approx. 18¾ (21¼, 24, 26¾, 29¼)".

Next row: Ch 1, hdc evenly across row, working 1 hdc in each st and ch-1 sp, and 2 hdc in each ch-3 sp. Fasten off.

Second Side

Work as for First Side.

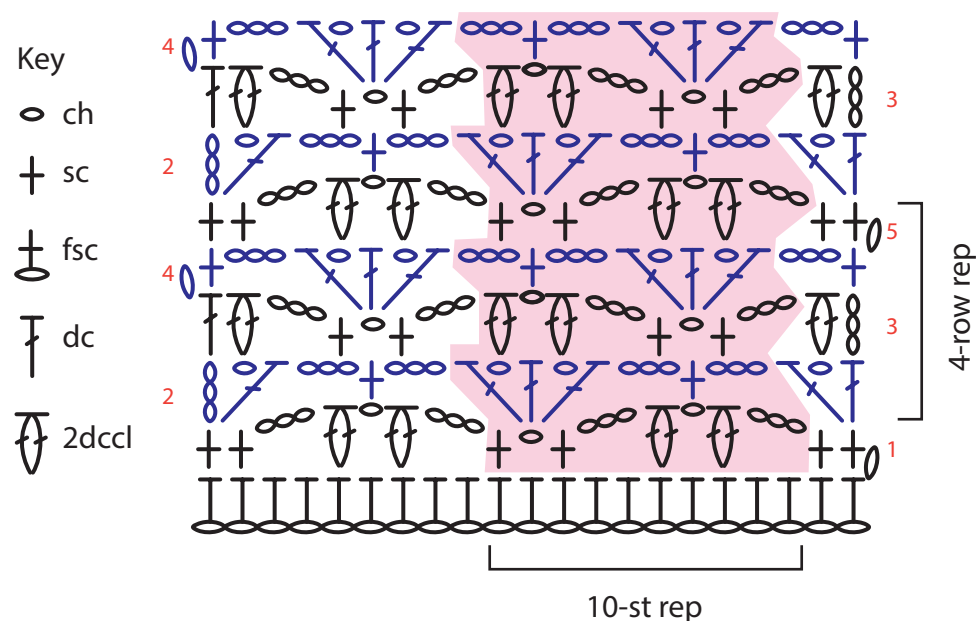
FINISHING

Weave in ends. Block Sides somewhat aggressively to open up lace patt. With WS facing, sew seams using mattress st so that a decorative "ridge" shows in the RS of the work.

With final row of both pieces butted up together, sew seams for 24¼ (25¼, 26¼, 27¼, 28¼)" from outer edges inward, leaving center 12 (12½, 13, 13½, 14)" unsewn for neck opening. Sew side seams for 20¼ (20½, 20¾, 21, 21¼)" from the lower edge, leaving upper 10 (11, 12, 13, 14)" unsewn for armhole openings.

Abbreviations

2dccl	2 double crochet cluster
bet	between
ch	chain(s)
dc	double crochet
hdc	half double crochet
mult	multiple
patt	pattern
rep	repeat
RS	right side
sc	single crochet
sk	skip
sp	space(s)
st(s)	stitch(es)
WS	wrong side
yo	yarnover



Seashells Coverup

By Premier® Yarns Design Team

project continued

