



Earth and Sky Cardi

SIZES

XS-S (M-1X, 2X-5X)
Shown in M-1X Size.

FINISHED MEASUREMENTS

Bust: 35 (49, 63)''
Length: 15½ (19, 19)''

MATERIALS

Premier® Yarns Cotton Sprout™ (100% Cotton; 3.5 oz/100g, 230yds/210m)

- MC: 1149-28 Bark – 1 (2, 3) balls
- CC1: 1149-26 Cream – 1 (1, 2) balls
- CC2: 1149-27 Beige – 1 (1, 2) balls
- CC3: 1149-16 Aqua – 1 (1, 2) balls
- CC4: 1149-14 Teal – 1 (1, 2) balls

Hook: US Size 8 (5 mm) *or size needed to obtain gauge*

Notions: Tapestry needle

GAUGE

1 Motif = 3½'' square
17 sts x 11 rows = 4'' in hdc
Save time, check your gauge.

Skills/techniques used in this pattern:

- Working in the round.
- Single crochet, double crochet, half double crochet, and chains.
- Joining motifs with mattress stitch.

STITCH GUIDE

Motif

With larger hook, ch 4, join with sl st to form ring.

Rnd 1: Ch 3 (counts as dc here and throughout), 2 dc in ring, ch 3, (3 dc in ring, ch 3) 2 times, 3 dc in ring, ch 1, join with hdc to top of beg ch-3 – 12 dc, 4 corner sps.

Rnd 2: Ch 3, 2 dc in same sp, ch 1, *(3 dc, ch 3, 3 dc) in corner sp, ch 1; rep from * 2 more times, 3 dc in same sp as beg dc, ch 1, join with hdc to top of beg ch-3 – 24 dc, 4 corner sps, 4 ch-1 sps.

Rnd 3: Ch 3, 2 dc in same sp, ch 1, 3 dc in ch-1 sp, ch 1, *(3 dc, ch 3, 3 dc) in corner sp, ch 1, 3 dc in ch-1 sp, ch 1; rep from * 2 more times, 3 dc in same sp as beg dc, ch 1, join with hdc to top of beg ch-3 – 36 dc, 4 corner sps, 8 ch-1 sps.

Rnd 4: Ch 1, sc in same sp, (sc in blo of next 3 sts, sc in ch-1 sp) 2 times, sc in blo of next 3 sts, (sc, ch 2, sc) in ch-3 sp, *(sc in blo of next 3 sts, sc in ch-1 sp) 2 times, sc in blo of next 3 sts, (sc, ch 2, sc) in ch-3 sp; rep from * 2 more times, sc in same sp as beg sc, ch 2, join with sl st to beg sc – 13 sc along each side, 4 ch-2 corner sps. Fasten off.

Color Sequences:

Motif 1

Rnd 1: CC2; **Rnd 2:** CC3; **Rnd 3:** MC; **Rnd 4:** CC1

Motif 2

Rnd 1: CC4; **Rnd 2:** MC; **Rnd 3:** CC1; **Rnd 4:** CC3

Motif 3

Rnd 1: MC; **Rnd 2:** CC1; **Rnd 3:** CC3; **Rnd 4:** CC2

Motif 4

Rnd 1: CC1; **Rnd 2:** CC4; **Rnd 3:** CC2; **Rnd 4:** CC3

Motif 5

Rnd 1: CC3; **Rnd 2:** MC; **Rnd 3:** CC4; **Rnd 4:** CC1

PATTERN NOTES

Motifs are worked individually and sewn together. Edges are crocheted directly onto assembled motifs.

Earth and Sky Cardi

By Premier® Yarns Design Team

project continued

CARDIGAN

Using diagram as a guide, make 4 (5, 6) **Motifs** for each Sleeve, 8 (15, 20) **Motifs** for Left & Right Fronts, and 20 (35, 45) **Motifs** for Back. Using mattress st, assemble Sleeves, Fronts, and Back. Sew Fronts to back at shoulders, leaving center Back **Motif** free for neck. Sew Sleeves to Body. Sew Side seams.

FINISHING

Weave in ends.

Body Edging

Join MC to lower Right Front corner with RS facing.

Set-up Rnd: Ch 2 (does not act as a st), at a rate of 1 st per sc along **Motifs** and 1 st in each corner sp, hdc evenly up Right Front, across Back Neck, down Left Front, across entire lower edge, working 1 hdc in each st and ch-2 sp, and (hdc, ch 2, hdc) in each exterior corner, and hdc2tog next to each interior Neck corner, join with sl st to beg hdc.

Rnds 2-3: Ch 2 (does not act as a st), hdc in same sp, hdc in the third loop of each st around, working (hdc, ch 2, hdc) in each ch-2 sp and hdc2tog on each side of interior Neck corners, join with sl st to beg hdc.

Fasten off. Block lightly.

Sleeve Edging

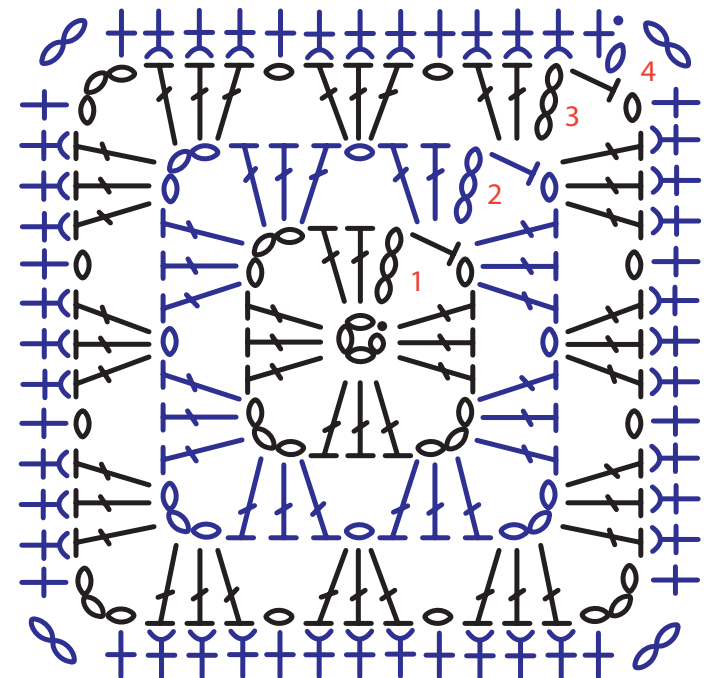
Join MC to Sleeve opening. Work Set-up Rnd and Rnd 2 as for Body Edging.

Weave in rem ends.

Abbreviations

beg	beginning
blo	back loop only
CC	contrast color
ch	chain(s)
dc	double crochet
hdc	half double crochet
hdc2tog	half double crochet 2 sts together (1 st dec'd)
MC	main color
meas	measures
patt	pattern
rep	repeat
rnds	rounds
RS	right side
sc	single crochet
sk	skip
sl st	slip stitch
sp	space(s)
st(s)	stitch(es)

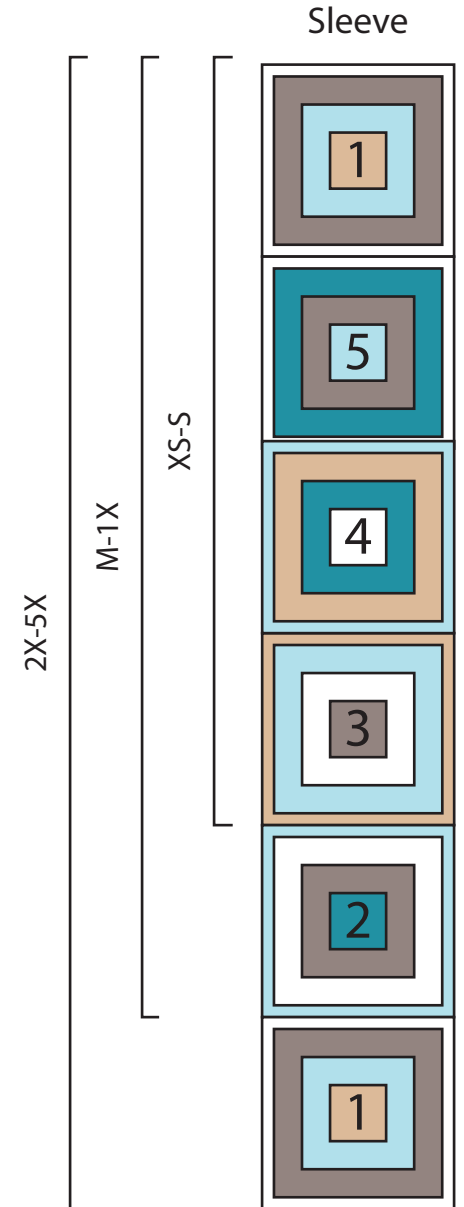
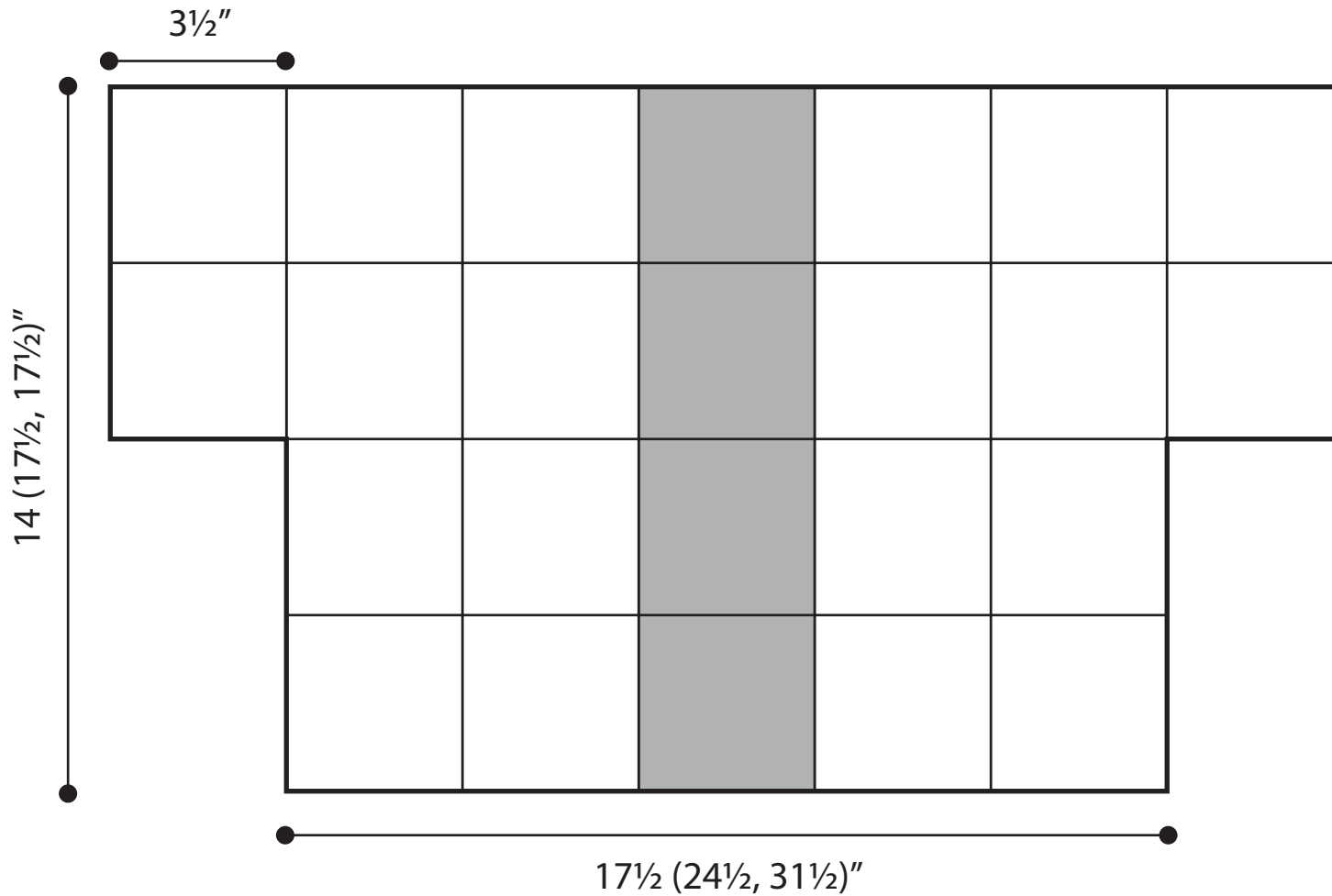
Motif Chart



Earth and Sky Cardi

project continued

By Premier® Yarns Design Team

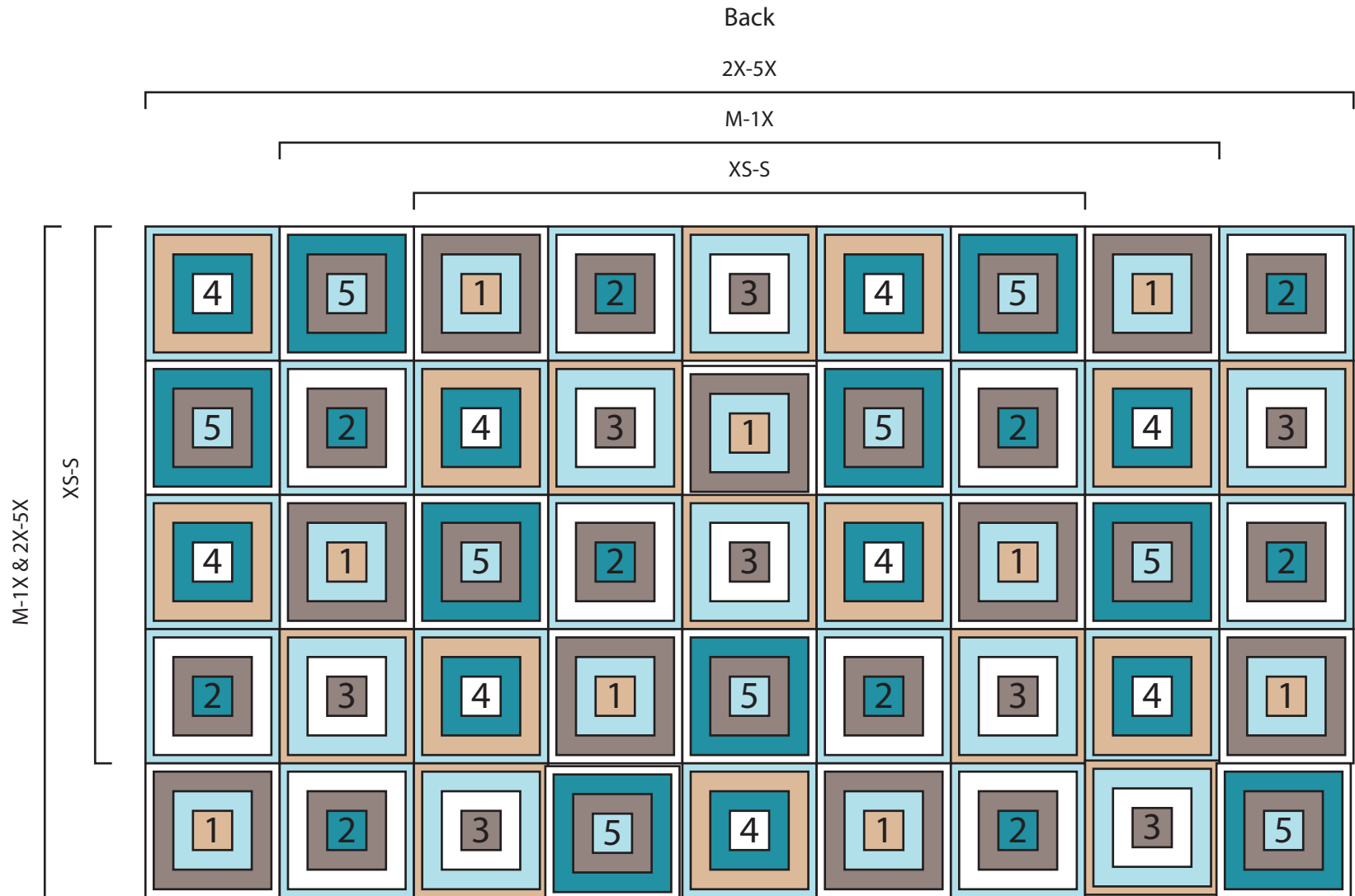


Earth and Sky Cardi

By Premier® Yarns Design Team

project continued

- MC
- CC1
- CC2
- CC3
- CC4



Earth and Sky Cardi

By Premier® Yarns Design Team

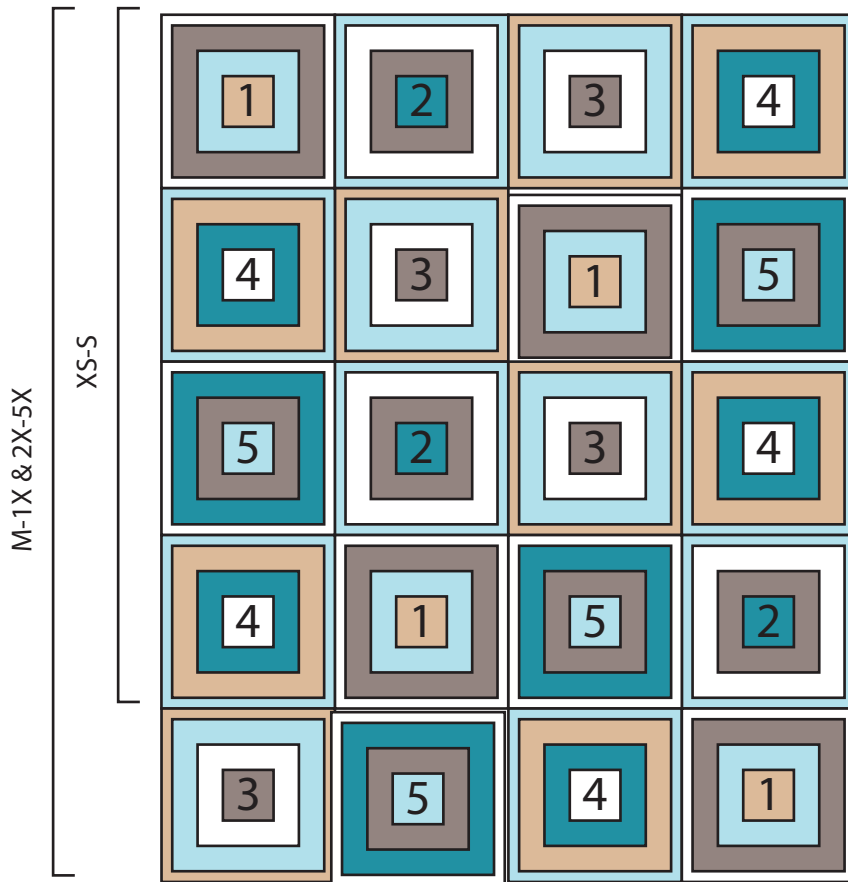
project continued

Right Front

2X-5X

M-1X

XS-S



Left Front

2X-5X

M-1X

XS-S

