



Mixed Motif Blanket

FINISHED MEASUREMENTS

Width: 42½" (before border)

Length: 51" (before border)

MATERIALS

Premier® Yarns Cotton Sprout™ Worsted (100% Cotton; 3.5 oz/100g, 180yds/165m)

- 2101-26 Cream – 12 balls

Hook: US Size I-9 (5.5 mm) *or size needed to obtain gauge*

Notions: Tapestry needle

GAUGE

14 dc x 7 rows = 4"

Any Motif = 8½" across

Save time, check your gauge.

Skills/techniques used in this pattern:

- Double crochet, half double crochet, single crochet, chains, magic ring.
- Working into the third loop of half double crochet stitches.
- Mattress stitch seaming.
- Reading stitch charts.

STITCH GUIDE

Magic Ring: Wrap yarn around your left middle finger twice, leaving a 6" tail. Insert hook under both strands and pull up a loop. Ch 1 and beg working directly into center of ring. This ring can be tightened later by pulling on the yarn tail.

Front Post Half Double Crochet (Fphdc): Yo, insert hook from front to back to front around the post of the st and draw yarn through, yo and draw through all 3 loops on hook.

PATTERN NOTES

Motifs are worked separately and sewn together. The border is crocheted directly onto the assembled motifs. Motifs are provided in chart form only.

BLANKET

Work Rnds 1-7 of each Motif. Make 6 of each type, 30 Motifs total. Then work a final rnd:

Rnd 8: Ch 1, *sc, ch 2, sc in corner, sc in each st/sp to next corner; rep from * 3 more times, join with sl st to beg sc. Fasten off.

FINISHING

Block Motifs to 8½" square. Join according to diagram, with RS of Motifs facing each other, using sl st through both thicknesses, and working through inner loops.

Border

With WS facing, join yarn to any ch-2 corner.

Rnd 1 (WS): Ch 2 (does not act as a st), hdc in same sp, *fphdc in each sc to next corner, (hdc, ch 2, hdc) in corner; rep from * 2 more times, fphdc in each sc to beginning corner, hdc in same sp, ch 1, join with sc to beg hdc, turn.

Rnds 2-5 (RS): Ch 2 (does not act as a st), hdc in same sp, *hdc in the third loop of each st to corner, (hdc, ch 2, hdc) into ch-2 sp; rep from * 2 more times, hdc in third loop of each st to beginning sp, hdc in sp, ch 1, join with sc to beg hdc.

Abbreviations

beg begin(ning)
ch chain(s)
dc double crochet
hdc half double crochet



Mixed Motif Blanket

By Premier® Yarns Design Team

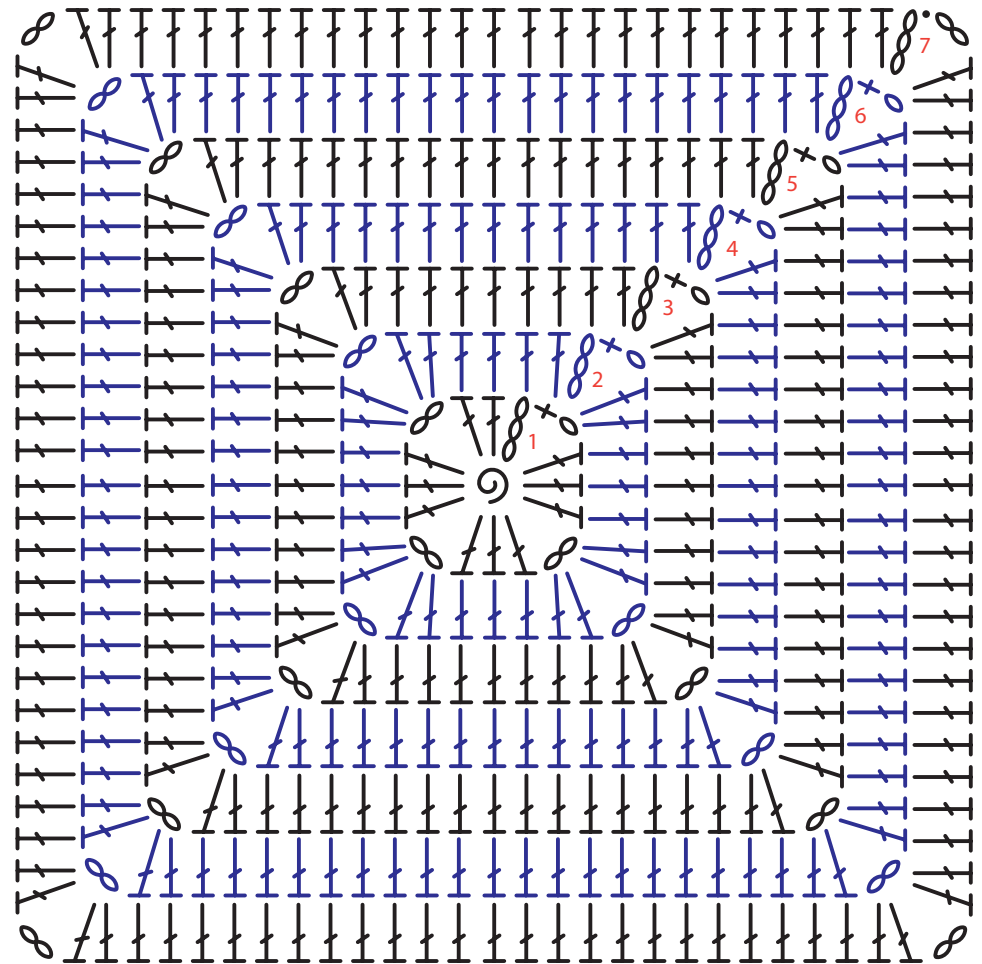
project continued

- patt** pattern
- rep** repeat
- RS** right side
- sc** single crochet
- sk** skip
- sl st** slip stitch
- sp** space(s)
- st(s)** stitch(es)
- WS** wrong side

Key

-  Magic ring
-  sl st
-  ch
-  dc

Plain Motif

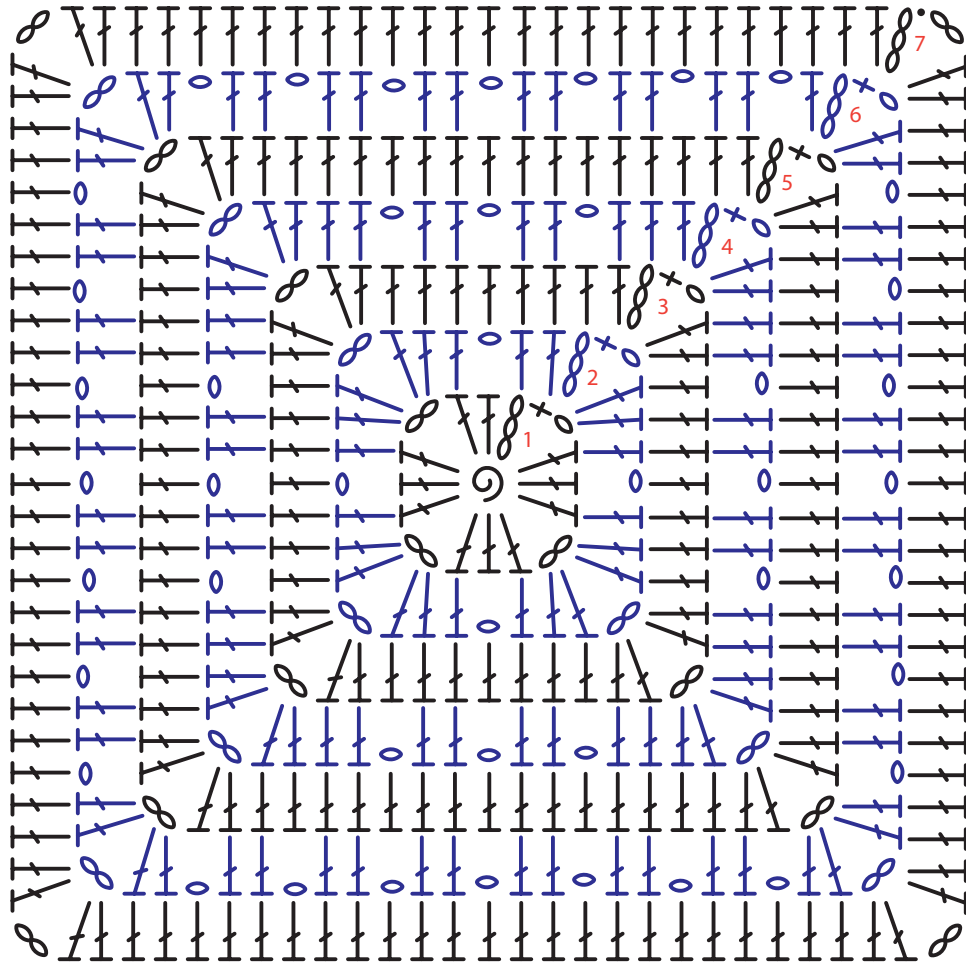


Mixed Motif Blanket

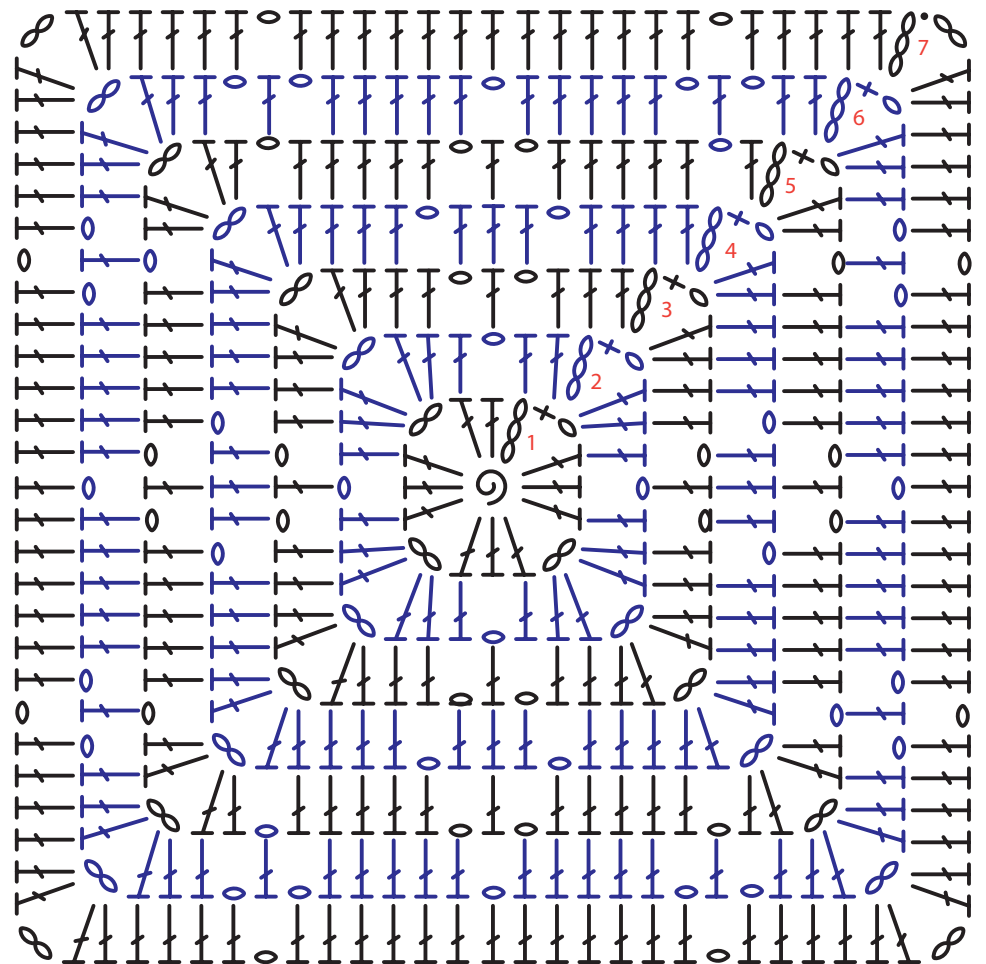
By Premier® Yarns Design Team

project continued

Mesh Motif



Florets Motif

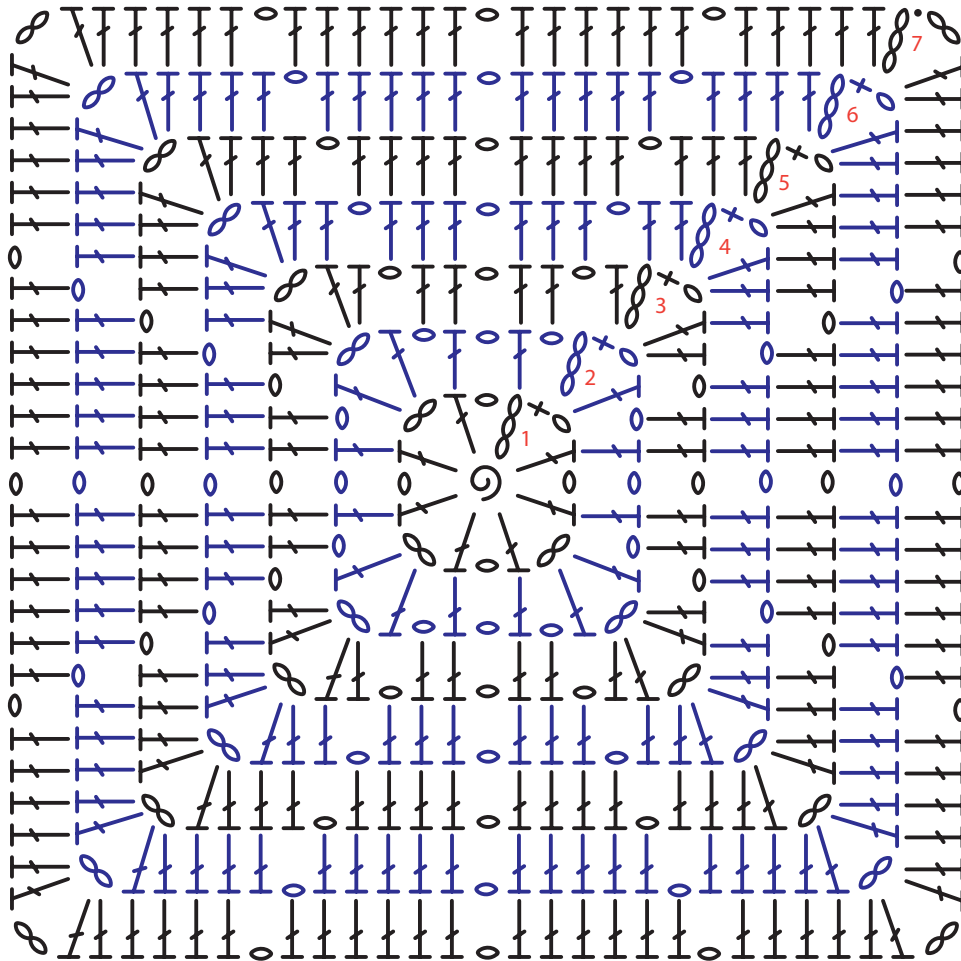


Mixed Motif Blanket

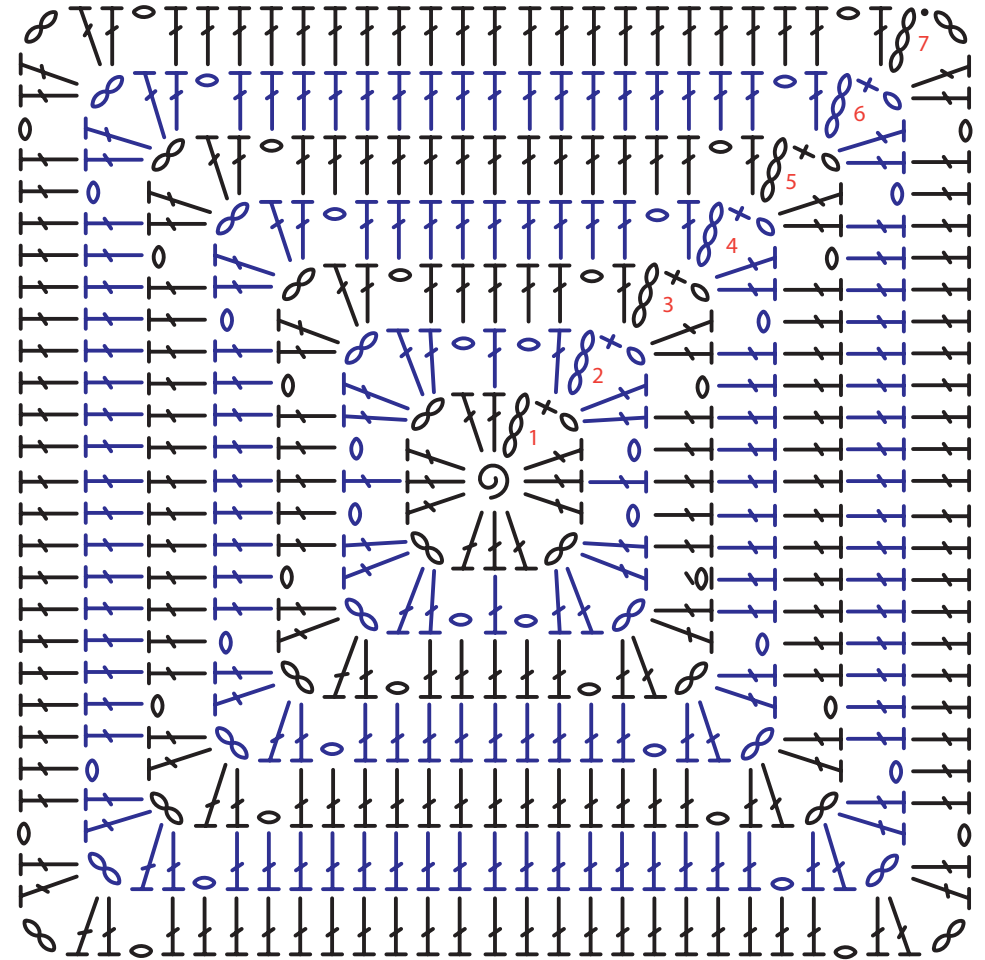
By Premier® Yarns Design Team

project continued

Sunray Motif



V Square Motif



Mixed Motif Blanket

By Premier® Yarns Design Team

project continued

Layout Diagram

PLAIN	MESH	FLORETS	SUNRAY	V SQUARE
FLORETS	SUNRAY	V SQUARE	PLAIN	MESH
V SQUARE	PLAIN	MESH	FLORETS	SUNRAY
PLAIN	MESH	FLORETS	SUNRAY	V SQUARE
FLORETS	SUNRAY	V SQUARE	PLAIN	MESH
V SQUARE	PLAIN	MESH	FLORETS	SUNRAY

