



Silver Leaf Shawl

Level: Intermediate

SIZES

One Size

FINISHED MEASUREMENTS

Depth: 25"

Width across top edge: 72½"

MATERIALS

Premier® Yarns Cotton Fair® (52% Cotton, 48% Acrylic; 3.5oz/100g, 317yds/290m)

- 27-26 Silver – 3 balls

Needle: US Size 8 (5 mm) 32" circular knitting needle *or size needed to obtain gauge*

Notions: Tapestry needle

GAUGE

18 sts and 32 rows= 4" in St st after blocking

Save time, check your gauge.

PATTERN NOTES

This Shawl is worked from the center neck out. There are 4 increases every right-side row to create the triangular shape. Both written and charted instructions are included.

SHAWL

Cast on 19 sts.

Setup (Chart A)

Work Rows 1-18 once, following the written instructions below or using Chart A on page 3.

Row 1 (RS): K3, p13, k3.

Row 2 (WS): P3, k13, p3.

Row 3: K3, yo, k1, yo, p1, ssk, k2, yo, k1, yo, k2, k2tog, p1, yo, k1, yo, k3 – 23 sts.

Row 4: P6, k1, p9, k1, p6.

Row 5: (K3, yo) twice, p1, ssk, k2, yo, k1, yo, k2, k2tog, p1, (yo, k3) twice – 27 sts.

Row 6: P8, k1, p9, k1, p8.

Row 7: K3, yo, k5, yo, p1, ssk, k2, yo, k1, yo, k2, k2tog, p1, yo, k5, yo, k3 – 31 sts.

Row 8: P10, k1, p9, k1, p10.

Row 9: K3, yo, k7, yo, p1, yo, ssk, k5, k2tog, yo, p1, yo, k7, yo, k3 – 35 sts.

Row 10: P12, k1, p9, k1, p12.

Row 11: K3, yo, k1, yo, k2, CDD, k2, yo, k1, yo, p1, k1, yo, ssk, k3, k2tog, yo, k1, p1, yo, k1, yo, k2, CDD, k2, yo, k1, yo, k3 – 39 sts.

Row 12: P14, k1, p9, k1, p14.

Row 13: (K3, yo) twice, k1, CDD, k1, yo, k3, yo, p1, k2, yo, ssk, k1, k2tog, yo, k2, p1, yo, k3, yo, k1, CDD, k1, (yo, k3) twice – 43 sts.

Row 14: P16, k1, p9, k1, p16.

Row 15: K3, yo, k5, yo, CDD, yo, k5, yo, p1, k3, yo, CDD, yo, k3, p1, yo, k5, yo, CDD, yo, k5, yo, k3 – 47 sts.

Row 16: P18, k1, p9, k1, p18.

Row 17: K3, yo, p15, yo, p11, yo, p15, yo, k3 – 51 sts.

Row 18: P3, k45, p3.

Main Body (Chart B)

Work Rows 1-16, 10 times, following the written instructions below or using Chart B on the page 3. Center panel is the section in square brackets ([...]).

Row 1 (RS): K3, yo, *k1, yo, k6, CDD, k6, yo; rep from * to 1 st bef center panel, k1, yo, [p1, ssk, k2, yo, k1, yo, k2, k2tog, p1], yo, *k1, yo, k6, CDD, k6, yo; rep from * to last 4 sts, k1, yo, k3 – 4 sts inc'd.

WS Rows 2-14: Work sts as they appear, p the purls and k the knits.

Silver Leaf Shawl

project continued

By Premier® Yarns Design Team

Row 3: K3, yo, k1, *k2, yo, k5, CDD, k5, yo, k1; rep from * to 2 sts bef center panel, k2, yo, [p1, ssk, k2, yo, k1, yo, k2, k2tog, p1], yo, k1, *k2, yo, k5, CDD, k5, yo, k1; rep from * to last 5 sts, k2, yo, k3 – 4 sts inc'd.

Row 5: K3, yo, k2, *k3, yo, k4, CDD, k4, yo, k2; rep from * to 3 sts bef center panel, k3, yo, [p1, ssk, k2, yo, k1, yo, k2, k2tog, p1], yo, k2, *k3, yo, k4, CDD, k4, yo, k2; rep from * to last 6 sts, k3, yo, k3 – 4 sts inc'd.

Row 7: K3, yo, k3, *k4, yo, k3, CDD, k3, yo, k3; rep from * to 4 sts bef center panel, k4, yo, [p1, yo, ssk, k5, k2tog, yo, p1], yo, k3, *k4, yo, k3, CDD, k3, yo, k3; rep from * to last 7 sts, k4, yo, k3 – 4 sts inc'd.

Row 9: K3, yo, k4, *k5, yo, k2, CDD, k2, yo, k4; rep from * to 5 sts bef center panel, k5, yo, [p1, k1, yo, ssk, k3, k2tog, yo, k1, p1], yo, k4, *k5, yo, k2, CDD, k2, yo, k4; rep from * to last 8 sts, k5, yo, k3 – 4 sts inc'd.

Row 11: K3, yo, k5, *k6, yo, k1, CDD, k1, yo, k5; rep from * to 6 sts bef center panel, k6, yo, [p1, k2, yo, ssk, k1, k2tog, yo, k2, p1], yo, k5, *k6, yo, k1, CDD, k1, yo, k5; rep from * to last 9 sts, k6, yo, k3 – 4 sts inc'd.

Row 13: K3, yo, k6, *k7, yo, CDD, yo, k6; rep from * to 7 sts bef center panel, k7, yo, [p1, k3, yo, CDD, yo, k3, p1], yo, k6, *k7, yo, CDD, yo, k6; rep from * to last 10 sts, k7, yo, k3 – 4 sts inc'd.

Row 15: K3, yo, p31, yo, [p11], yo, p31, yo, k3 – 4 sts inc'd.

Row 16 (WS): P3, knit to last 3 sts, p3.

320 sts inc'd, 371 sts.

Bind off loosely.

FINISHING

Weave in ends. Block firmly.

Abbreviations

| | |
|----------------|------------------------------------------------------------------------------------------|
| bef | before |
| CDD | central double decrease - slip 2 sts tog as if to k, k1, pass both slipped sts over k st |
| inc('d) | increase(d) |
| k2tog | knit 2 sts together (1 st dec'd) |
| patt | pattern |
| rep | repeat(ing) |
| RS | right side |
| ssk | slip slip knit (1 st dec'd) |
| st(s) | stitch(es) |
| WS | wrong side |
| yo | yarn over |

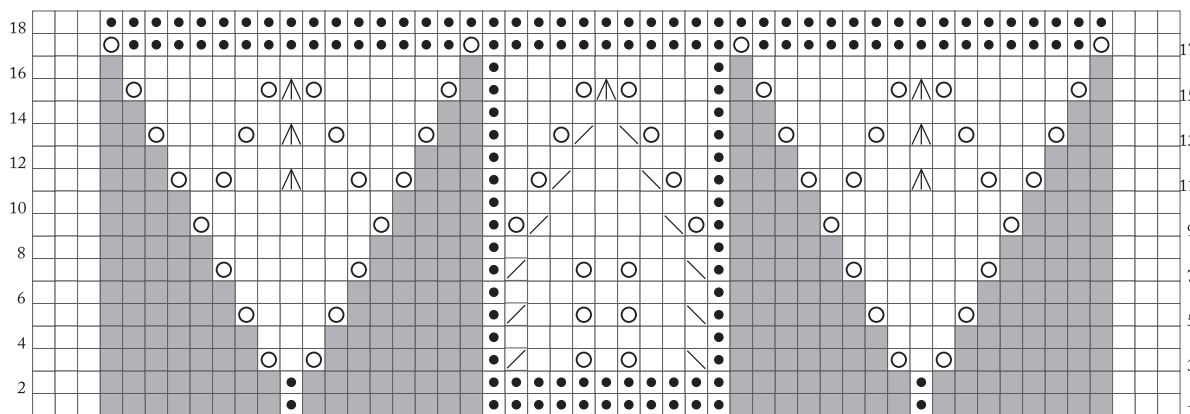


Silver Leaf Shawl

project continued

By Premier® Yarns Design Team

Chart A











-  Knit on RS; Purl on WS
-  Purl on RS; Knit on WS
-  K2tog
-  Ssk
-  CDD
-  YO
-  No stitch
-  Patt rep

Chart B

