



Sierra Sideways Shawl

Level: Intermediate

SIZES

One Size

FINISHED MEASUREMENTS

Length: 60"

Depth: 23"

MATERIALS

Premier® Yarns Cotton Collage (46% Cotton; 33% Superwash Fine Merino, 12% Polyamide, 9% PBT 1.75oz/50g, 246yds/225m)

- 1133-03 Sea Multi – 3 balls

Needle: US Size 7 (4.5 mm) straight needles *or size needed to obtain gauge*

Notions: Tapestry needle, stitch marker

GAUGE

22 sts x 32 rows = 4" in Garter st

Save time, check your gauge.

STITCH GUIDE

Garter st: Knit every row.

PATTERN NOTES

This Shawl is worked sideways from point to point. The edging is worked at the same time as the body of the Shawl. All stitches are slipped purlwise.

SHAWL

Cast on 7 sts.

Increase Section

Setup Row (WS): K4, pm, k3.

Row 1 (RS): Sl 1, knit to 1 st bef m, yo, k1 tbl, k2, yo, k2 — 2 sts inc'd.

WS Rows 2, 4, 6: Knit.

Row 3: Sl 1, knit to 1 st bef m, yo, k1 tbl, k3, yo, k2 — 2 sts inc'd.

Row 5: Sl 1, knit to 1 st bef m, yo, k1 tbl, k2, yo, k2tog, yo, k2 — 2 sts inc'd.

Row 7: Sl 1, knit to 1 st bef m, yo, k1 tbl, k3, yo, k2tog, yo, k2 — 2 sts inc'd.

Row 8: Bind off 4 sts, knit to end — 4 sts dec'd. Rep Rows 1-8, 29 more times — 116 sts inc'd, 127 sts total.

Decrease Section

Row 1 (RS): Sl 1, knit to 4 sts bef m, k3tog, yo, k1 tbl, k2, yo, k2.

WS Rows 2, 4, 6: Knit.

Row 3: Sl 1, knit to 4 sts bef m, k3tog, yo, k1 tbl, k3, yo, k2.

Row 5: Sl 1, knit to 4 sts bef m, k3tog, yo, k1 tbl, k2, yo, k2tog, yo, k2.

Row 7: Sl 1, knit to 4 sts bef m, k3tog, yo, k1 tbl, k3, yo, k2tog, yo, k2.

Row 8: Bind off 4 sts, knit to end — 4 sts dec'd.

On last patt rep, work Row 7 as follows:

Sl 1, k3tog, yo, k1 tbl, k3, yo, k2tog, yo, k2.

Rep Rows 1-8, 29 more times — 116 sts dec'd, 7 sts rem.

Next Row (RS): Knit.

Bind off all sts.

FINISHING

Weave in ends. Wash and block to Finished Measurements, if desired.

Sierra Sideways Shawl

By Premier Yarns Design Team

project continued

Abbreviations

bef	before
dec('d)	decrease(d)
inc('d)	increase(d)
k	knit
k2tog	knit 2 sts together (1 st dec'd)
k3tog	knit 3 sts together (2 sts dec'd)
m	marker
meas	measures
patt	pattern
pm	place marker
rem	remain(ing)
rep	repeat(ing)
RS	right side
sl	slip
st(s)	stitch(es)
tbl	through the back loop
WS	wrong side
yo	yarn over



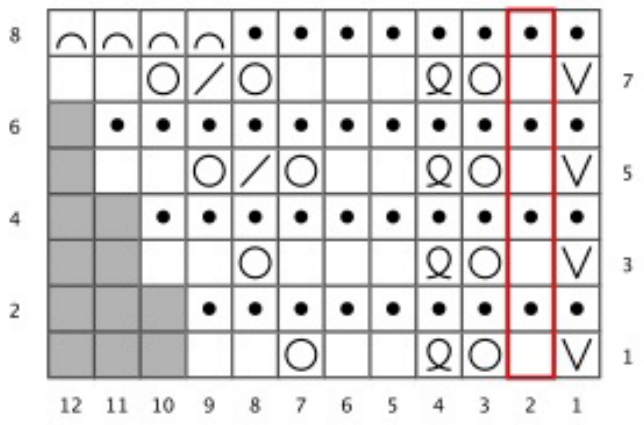
PREMIER[®]

Sierra Sideways Shawl

By Premier Yarns Design Team

project continued

Increase Section



- Key
- knit
 - RS: slip
WS: slip purlwise with yarn in front
 - yo
 - RS: k2tbl
WS: p2tbl
 - grey no stitch
 - bind off
 - patt rep
 - RS: purl
WS: knit
 - RS: k2tog
WS: p2tog
 - RS: k3tog
WS: p3tog

Decrease Section

