



Lydia Lace Hat

Level: Intermediate

SIZE(S)

Adult

FINISHED MEASUREMENTS

Circumference: 19"

Height: 10"

MATERIALS

Premier® Yarns Cotton Collage™ (46% Cotton; 33% Superwash Fine Merino Wool, 12% Polyamide, 9% PBT; 1.75oz/50g, 246yds/225m)

- 1133-01 Party Multi – 1 ball

Needle: US Size 5 (3.75 mm) 16" circular needle and set of double point needles, US Size 4 (3.5 mm) 16" circular needle *or size needed to obtain gauge*

Notions: Tapestry needle, stitch marker

GAUGE

28 sts x 36 rows = 4" in St st with larger needles

Save time, check your gauge.

STITCH GUIDE

2X2 Rib (*multiple 4 sts*)

Rnd 1: *K2, p2; rep from * to end.

Rep Rnd 1 for patt.

Little Arrowhead Lace Pattern (*multiple 6 sts*)

Rnd 1: *Yo, ssk, k1, k2tog, yo, k1; rep from * to end.

Rnds 2 and 4: Knit.

Rnd 3: *K1, yo, s2kp, yo, k2; rep from * to end.

Rep Rnds 1-4 for patt.

PATTERN NOTES

The Hat is worked from the bottom up in the round.

HAT

With smaller needle, cast on 132 sts, pm and join to work in the rnd, being careful not to twist sts. Work even in **2X2 Rib** until piece meas 2" from cast on edge. Switch to larger needle.

Work even in **Little Arrowhead Lace Patt** until piece meas 9" from cast-on edge.

Crown Shaping

Note: If working on a circular needle, switch to dpns when necessary.

Rnd 1: *Yo, ssk, k1, k2tog; rep from * to end — 22 sts dec'd, 110 sts rem.

Rnd 2: Knit.

Rnd 3: *K1, yo, k1, k3tog; rep from * to end — 22 sts dec'd, 88 sts rem.

Rnd 4: Knit.

Rnd 5: *Yo, k1, k3tog; rep from * to end — 22 sts dec'd, 66 sts rem.

Rnd 6: Knit.

Rnd 7: *K1, k2tog; rep from * to end — 22 sts dec'd, 44 sts rem.

Rnd 8: *K2tog; rep from * to end — 22 sts dec'd, 22 sts rem.

Rnd 9: *k2tog, rep from * to end — 11 sts dec'd, 11 sts rem.

Cut yarn leaving a long tail.

FINISHING

Thread tail onto tapestry needle and draw through remaining sts.

Weave in ends.

Lydia Lace Hat

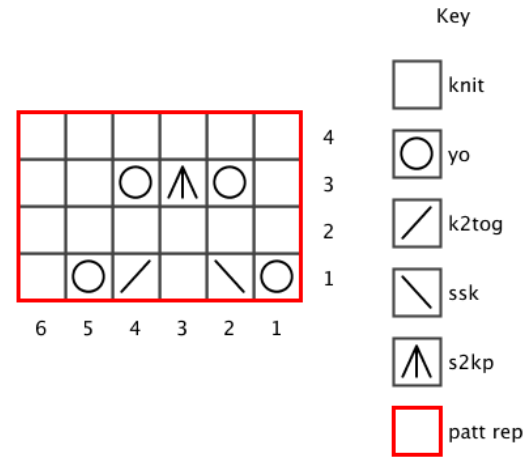
project continued

By Premier Yarns Design Team

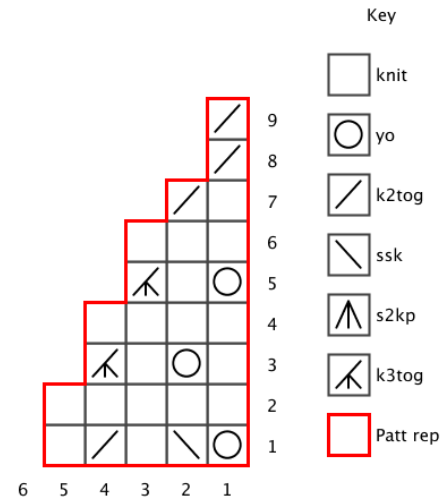
Abbreviations

- dec('d)** decrease(d)
dpn(s) double point needle(s)
k knit
k2tog knit 2 sts together (1 st dec'd)
k3tog knit 3 sts together (2 sts dec'd)
meas measures
patt pattern
pm place marker
p purl
rem remain(ing)
rep repeat(ing)
s2kp slip 2 sts together as if to knit, k1, pass both slipped sts over knit st
ssk slip slip knit (1 st dec'd)
st(s) stitch(es)
St st Stockinette stitch: knit every rnd.
yo yarn over

Little Arrowhead Lace Chart



Crown Shaping Chart



Lydia Lace Hat

project continued

By Premier Yarns Design Team

