



Colorful Checkerboard Throw

FINISHED MEASUREMENTS

Width: 53"

Length: 73"

MATERIALS

Premier® Yarns Colorfusion™ Chunky (100% Acrylic; 3.5oz/100g, 109yds/100m)

- MC: 1174-01 Springtime – 15 balls
- CC: 1174-03 Tropical – 11 balls

Needle: US Size 11 (8 mm) straight and 40" or longer circular *or size needed to obtain gauge*

Notions: Tapestry needle, removable stitch marker

GAUGE

11 sts x 24 rows = 4" in Garter st, each square will measure approximately 10"

Save time, check your gauge.

Skills/techniques used in this pattern:

- Knit stitches.
- Picking up stitches and knitting.
- Sk2p decreases.
- Backward loop or e-loop cast on.

PATTERN NOTES

This Throw is made up of mitered Garter stitch squares. The squares are joined as you go, which means no seaming at the end! If you prefer seaming or would like a more portable project, the Squares can be made individually and then seamed together.

THROW

Note: If making individual Squares for a seamed project, follow the instructions for "Square One", make 35 Squares - 18 in MC and 17 in CC and sew together using photo as a

guide and then add edging. Move marker on center stitch up every few rows. See Diagram for the color and order to work the specific Squares.

Square One

With MC, cast on 28 sts, place removable marker on last cast-on st, cast on 27 sts – 55 sts.

Row 1 (RS): Knit to 1 st bef m, sk2p, knit to end – 2 sts dec'd.

Row 2 (WS): Knit.

Rep Rows 1-2 until 3 sts rem.

Next Row (RS): Sk2p – 2 sts dec'd, 1 st rem.

If joining as you go, place rem st on left hand needle and move on to Square Two. If making separate squares, break yarn and pull through rem st.

Square Two

With CC, k1 (rem st from Square below) pick up and knit 27 sts along top RS of Square below, place removable marker on last picked up st, using backwards loop method, cast on 27 sts. Work remainder of Square as for Square One.

Square Three

With CC, cast on 28 sts, place removable marker on last cast-on st, pick up and knit 27 sts along side of RS of Square in column to the left. Work remainder of Square as for Square One.

Square Four

With MC, k1 (rem st from Square below) pick up and knit 27 sts along top RS of Square below, place removable marker on last picked up st, pick up and knit 27 sts along side of RS of Square in column to the left. Work remainder

Colorful Checkerboard Throw

By Tori Gurbisz for Premier® Yarns

project continued

of Square as for Square One.

Use Diagram as a guide for color and joining of Squares 1-4.

FINISHING

Edging

With MC and circular needle, pick up and knit approximately 140 sts along one short edge, 28 sts per Square. Work even in Garter st for 1½", loosely bind off all sts.

With MC and circular needle, pick up and knit approximately 140 sts along edge opposite of first edge worked, 28 sts per Square. Work even in Garter st for 1½", loosely bind off all sts.

Next edge, with MC and circular needle, pick up and knit 204 sts, 28 sts per Square and 4 sts along Edging at each end. Work even in Garter st for 1½", loosely bind off all sts. Rep for rem edge.

Weave in ends.

Abbreviations

bef	before
CC	contrasting color
dec('d)	decrease(d)
Garter st	Knit every row.
k	knit
k2tog	knit 2 sts together (1 st dec'd)
MC	main color
rem	remain(ing)
rep	repeat(ing)
RS	right side

sk2p

st(s)
WS

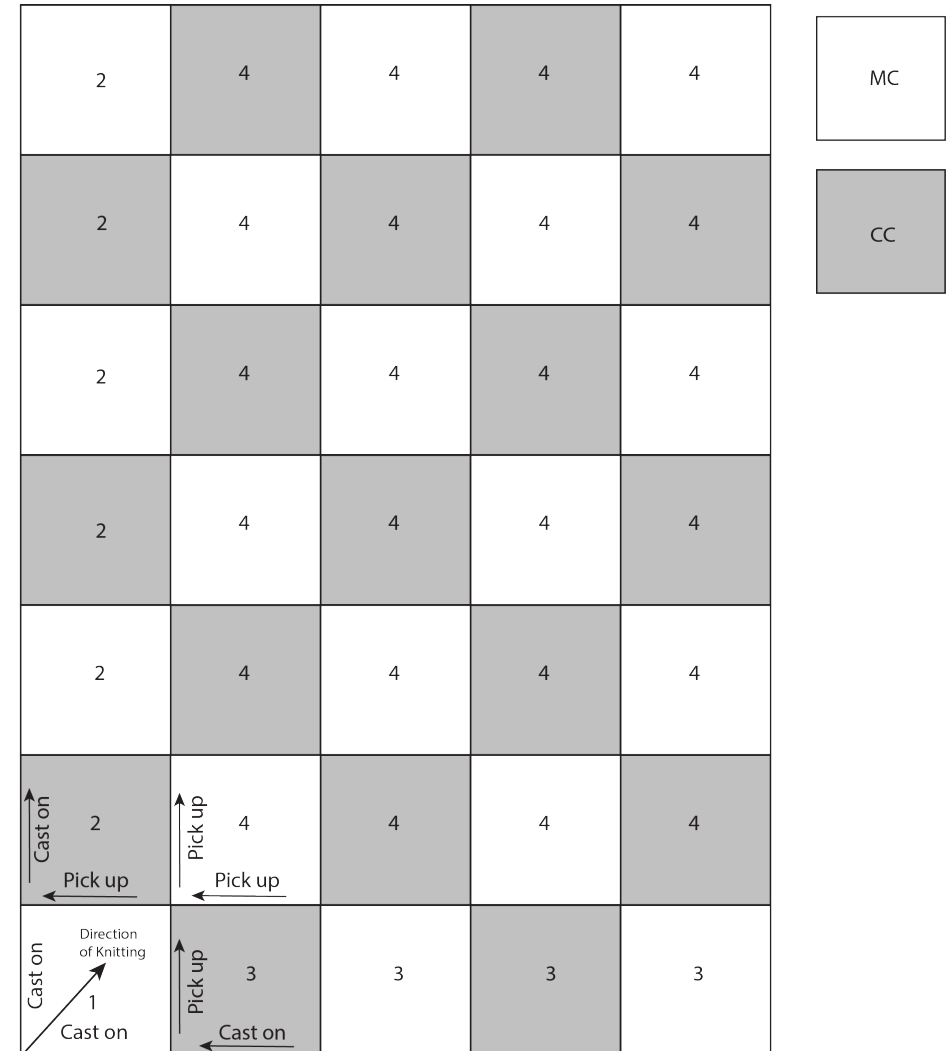
slip 1 st as if to k, k2tog, pass slipped

st over k2tog (2 sts dec'd)

stitch(es)

wrong side

Diagram



Work columns
in this order:

1 2 3 4 5