



Ciao Bella Scarf

Level: Intermediate

SIZE(S)

One Size

FINISHED MEASUREMENTS

Width: 8¾"

Length: 70"

MATERIALS

Premier Yarns® *Ciao Merino* (61% Superwash Fine Merino, 22% Nylon, 17% Alpaca;
1.75 oz/50 g, 220 m/241 yds)

- 2068-07 Vanilla – 2 balls

Needles: US Size 7 (4.5 mm) straight needles
or size needed to obtain gauge

Notions: Tapestry needle

GAUGE

22 sts x 34 rows = 4" in Pyramid Stitch

Save time check your gauge.

PATTERN NOTES

This scarf is knit flat in one piece from the bottom up.

SCARF

Cast on 49 sts.

Lower Edge

Rows 1-6: Knit.

Pyramid Stitch Section

Note: This section is also charted for your convenience on the last page.

Row 1 (WS): K3, [p1, k13] 3 times, p1, k3.

Row 2 (RS): K4, m1L, [p5, SSPP2, p5, m1R, k1, m1L] 2 times, p5, SSPP2, p5, m1R, k4.

Row 3: K3, p2, [k11, p3] 2 times, k11, p2, k3.

Row 4: K4, m1L, [k1, p4, SSPP2, p4, k1, m1R, k1, m1L] 2 times, k1, p4, SSPP2, p4, k1, m1R, k4.

Row 5: K3, p3, [k9, p5] 2 times, k9, p3, k3.

Row 6: K4, m1L, [k2, p3, SSPP2, p3, k2, m1R, k1, m1L] 2 times, k2, p3, SSPP2, p3, k2, m1R, k4.

Row 7: K3, p4, [k7, p7] 2 times, k7, p4, k3.

Row 8: K4, m1L, [k3, p2, SSPP2, p2, k3, m1R, k1, m1L] 2 times, k3, p2, SSPP2, p2, k3, m1R, k4.

Row 9: K3, p5, [k5, p9] 2 times, k5, p5, k3.

Row 10: K4, m1L, [k4, p1, SSPP2, p1, k4, m1R, k1, m1L] 2 times, k4, p1, SSPP2, p1, k4, m1R, k4.

Row 11: K3, p6, [k3, p11] 2 times, k3, p6, k3.

Row 12: K4, m1L, [k5, SSPP2, k5, m1R, k1, m1L] 2 times, k5, SSPP2, k5, m1R, k4.

Row 13: K10, [p1, k13] 2 times, p1, k10.

Row 14: K3, ssp [p5, m1R, k1, m1L, p5, SSPP2] 2 times, p5, m1R, k1, m1L, p5, p2tog, k3.

Row 15: K9, [p3, k11] 2 times, p3, k9.

Row 16: K3, ssp [p4, k1, m1R, k1, m1L, k1, p4, SSPP2] 2 times, p4, k1, m1R, k1, m1L, k1, p4, p2tog, k3.

Ciao Bella Scarf

project continued

By Premier® Yarns Design Team

Row 17: K8, [p5, k9] 2 times, p5, k8.

Row 18: K3, ssp [p3, k2, m1R, k1, m1L, k2, p3, SSPP2] 2 times, p3, k2, m1R, k1, m1L, k2, p3, p2tog, k3.

Row 19: [K7, p7] 3 times, k7.

Row 20: K3, ssp [p2, k3, m1R, k1, m1L, k3, p2, SSPP2] 2 times, p2, k3, m1R, k1, m1L, k3, p2, p2tog, k3.

Row 21: K6, [p9, k5] 2 times, p9, k6.

Row 22: K3, ssp [p1, k4, m1R, k1, m1L, k4, p1, SSPP2] 2 times, p1, k4, m1R, k1, m1L, k4, p1, p2tog, k3.

Row 23: K5, [p11, k3] 2 times, p11, k5.

Row 24: K3, ssp [k5, m1R, k1, m1L, k5, SSPP2] 2 times, k5, m1R, k1, m1L, k5, p2tog, k3.

Rows 1-24 establish patt.

Rep Rows 1-24 until piece meas approx 69¼" from cast-on edge, ending with Row 24 of patt.

Upper Edge

Rows 1-6: Knit.

Bind off all sts.

FINISHING

Gently wash and block to finished measurements. Weave in ends.

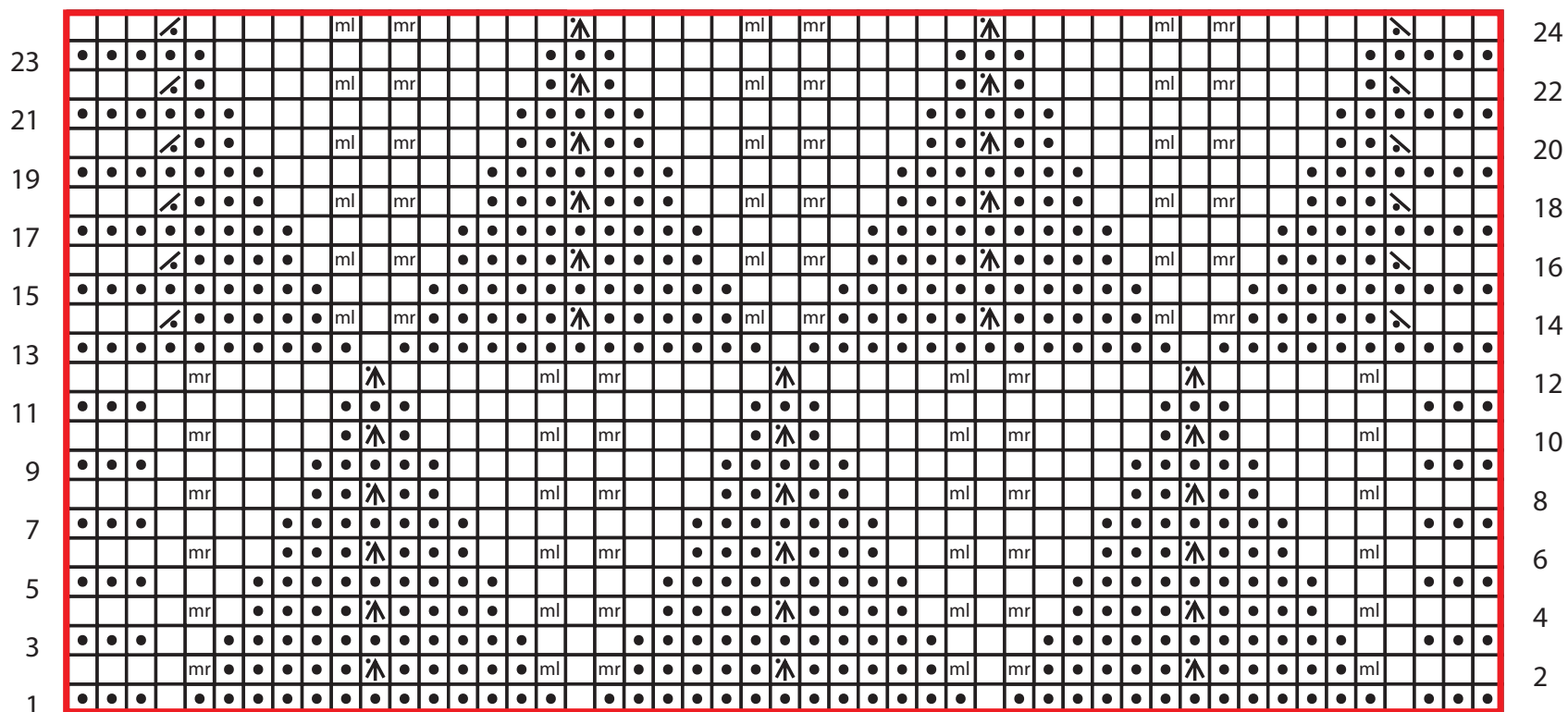
Abbreviations

k	knit
m1L	insert left needle from front to back under horizontal strand of yarn lying between st just worked and next st, knit or purl this st through the back loop (1 st inc'd)
m1R	insert left needle from back to front under horizontal strand of yarn lying between st just worked and next st, knit or purl this st through the front loop (1 st inc'd)
meas	measures
p2tog	purl 2 sts together (1 st dec'd)
p	purl
patt	patt
rep	repeat
RS	right side
ssp	slip next 2 sts individually knitwise, slip them back to left needle in this position, purl them together through the back loops (1 st dec'd)
SSPP2	slip 2 stitches knitwise, return these 2 stitches to left needle and then slip them as if to p2tog through back loops, purl 1, pass 2 slipped stitches over purl stitch; centered double decrease
st(s)	stitch(es)
WS	wrong side



project continued

Pyramid Stitch



Key

- | | |
|------------------------|----------------|
| knit on RS, purl on WS | p2tog |
| purl on RS, knit on WS | ssp |
| m1L | SSPP2 |
| m1R | pattern repeat |