



Sweetheart Dress

Level: Advanced

SIZES

3 (6, 12, 18, 24) months

FINISHED MEASUREMENTS

Chest: 19½ (21, 21½, 21¾, 22½)''

MATERIALS

Premier® Yarns Bloom™

(100% Acrylic; 7 oz/200 g, 656 yds/600 m)

- 1090-11 Hydrangea – 2 (2, 2, 2, 2) balls

Needle: US Size 6 (4.00 mm) 24'' circular needle
or size needed to obtain gauge

Notions: Tapestry needle, removable stitch markers in various colors, 1 – ½'' button

GAUGE

20 sts x 28 rows = 4'' in St st

Save time, check your gauge.

STITCH GUIDE

Sweetheart Pattern A (panel of 15 sts)

Row 1 (RS): K2, k2tog, yo, k1, yo, ssk, k1, k2tog, yo, k1, yo, ssk, k2.

Row 2 (WS): K2, p11, k2.

Row 3: K1, k2tog, yo, k3, yo, s2kp, yo, k3, yo, ssk, k1.

Row 4: K1, p13, k1.

Row 5: K1, yo, ssk, k9, k2tog, yo, k1.

Row 6: Work as for Row 2.

Row 7: K2, yo, ssk, k7, k2tog, yo, k2.

Row 8: K3, p9, k3.

Row 9: K3, yo, ssk, k5, k2tog, yo, k3.

Row 10: K4, p7, k4.

Row 11: K4, yo, ssk, k3, k2tog, yo, k4.

Row 12: K5, p5, k5.

Row 13: K6, yo, s2kp, yo, k6.

Row 14: K7, p1, k7.

Row 15: K7, yo, k2tog, k6.

Row 16: Knit.

Work Rows 1-16 once for patt.

Sweetheart Pattern B (multiple of 15 sts)

Rnd 1: *K2, k2tog, yo, k1, yo, ssk, k1, k2tog, yo, k1, yo, ssk, k2; rep from * to end.

Even Rnds 2-16: Knit.

Rnd 3: *K1, k2tog, yo, k3, yo, sl2, k1, p2sso, yo, k3, yo, ssk, k1; rep from * to end.

Rnd 5: *K1, yo, ssk, k9, k2tog, yo, k1; rep from * to end.

Rnd 7: *K2, yo, ssk, k7, k2tog, yo, k2; rep from * to end.

Rnd 9: *K3, yo, ssk, k5, k2tog, yo, k3; rep from * to end.

Rnd 11: *K4, yo, ssk, k3, k2tog, yo, k4; rep from * to end.

Rnd 13: *K6, yo, sl2, k1, p2sso, yo, k6; rep from * to end.

Rnd 15: *K7, yo, k2tog, k6; rep from * to end.

Work Rnds 1-16 once for patt.

Garner St in the Rnd (any number of sts)

Rnd 1 (RS): Knit.

Rnd 2: Purl.

Rep Rows 1-2 for patt.

PATTERN NOTES

This Dress is worked from the top down with raglan shaping. All stitched are slipped purlwise unless noted. Both written and charted instructions are included for the Sweetheart Pattern.

DRESS

Cast on 63 (71, 73, 75, 77) sts. Knit 3 rows, slipping last st of every row, wyif.

Sweetheart Dress

project continued

By Premier® Yarns Design Team

Buttonhole

K2, bind off 2, knit to the last st, sl1 wyif.

Knit to bound off sts, cast on 2 sts, k1, sl1 wyif.

Knit 2 rows, slipping last st of every row, wyif. Bind off 6 sts, knit to last st, sl1 wyif – 57 (65, 67, 69, 71) sts.

Setup Row 1 (WS): K11 (13, 13, 14, 14), pm, k6 (6, 6, 6, 7), pm, k23 (27, 29, 29, 29), pm, k6 (6, 6, 6, 7), pm, k10 (12, 12, 13, 13), sl1 wyif.

Setup Row 2 (RS): Knit to 1 st before marker, m1R, k1, sm, k1, m1L, knit to 1 st before the next marker, m1R, k1, sm, k1, m1L, k3 (5, 6, 6, 6), pm in contrasting color to mark start of **Sweetheart Pattern A**, work Row 1 of **Sweetheart Pattern A**, pm in contrasting color to mark end of **Sweetheart Pattern A**, k3 (5, 6, 6, 6), m1R, k1, sm, k1, m1L, knit to 1 st before marker, m1R, k1, sm, k1, m1L, knit to last st, sl1 wyif – 8 sts inc'd.

Row 1 (WS): [Knit to 1 st before marker, p1, sm, p1] twice, knit to next marker, work Row 2 of **Sweetheart Pattern A**, sm, [knit to 1 st before marker, p1, sm, p1] twice, knit to last st, sl1 wyif.

Row 2 (RS): [Knit to 1 st before marker, m1R, k1, sm, k1, m1L] twice, knit to next marker, sm, work **Sweetheart Pattern A**, sm, [knit to 1 st before marker, m1R, k1, sm, k1, m1L] twice, knit to last st, sl1 wyif – 8 sts inc'd.

Working in pattern as established rep last two rows 6 more times, and then work Row 1 once, at the same time working through Row 16 of **Sweetheart Pattern A**, removing contrasting color markers on last row of pattern – 19 (21, 21, 22, 22) sts for each back section, 22 (22, 22, 22, 23) sts for each sleeve, 39 (43, 45, 45, 45) for front; 121 (129, 131, 133, 135) total sts.

Joining Row/Rnd: [Knit to 1 st before marker, m1R, k1, sm, k1, m1L] 4 times, knit to end, pm a contrasting color marker to indicate beg/end of rnd and join to work in the rnd – 8 sts inc'd.

Even Rnd: [Purl to 1 st before marker, k1, sm, k1] 4 times, purl to end.

Inc Rnd: [Knit to 1 st before marker, m1R, k1, sm, k1, m1L] 4 times, knit to end – 8 sts inc'd.

Rep last 2 rows 3 (3, 3, 3, 4) more times, and then work Even Rnd once – 24 (26, 26, 27, 28) sts for each back section, 32 (32, 32, 32, 35) sts for each sleeve, 49 (53, 55, 55, 57) sts for front; 161 (169, 171, 173, 183) total sts.

Divide for Sleeves

Knit to marker, remove marker, bind off 32 (32, 32, 32, 35) sleeve sts, remove marker, knit to marker, remove marker, bind off 32 (32, 32, 32, 35) sleeve sts, remove marker, knit to end, leave beg/end of rnd maker in place – 97 (105, 107, 109, 113) sts.

Skirt

Next Rnd: K6 (7, 9, 3, 7), kfb in each sts to last 8 (8, 10, 5, 9) sts, knit to end – 180 (195, 195, 210, 210) sts. Work Stockinette st in the rnd (knit every rnd) for 6 (6, 7, 7, 8)“.

Work 16 Rnds of **Sweetheart Pattern B**.

Work **Garter St in the Rnd** for 8 rnds.

Bind off.

FINISHING

Weave in ends.



Sweetheart Dress

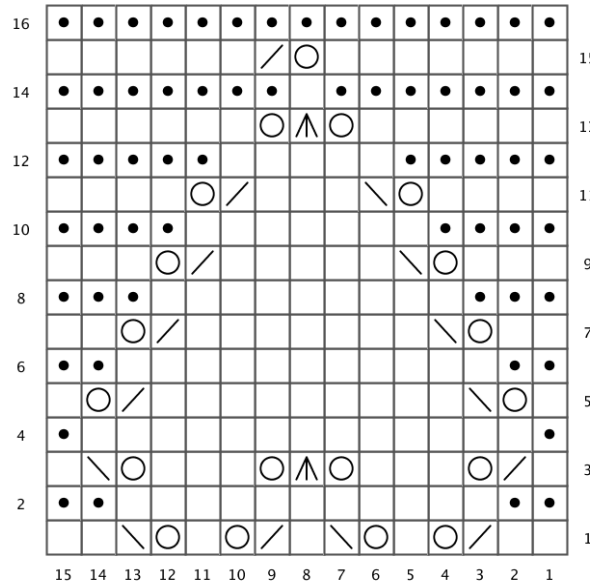
project continued

By Premier® Yarns Design Team

Abbreviations

- beg** begin(ning)
- dec('d)** decrease(d)
- inc('d)** increase(d)
- k** knit
- kfb** knit into the front and back of the next st (1 st inc'd)
- k2tog** knit 2 sts together (1 st dec'd)
- m1R** make 1 stitch, right leaning
- m1L** make 1 stitch, left leaning
- p** purl
- patt** pattern
- pm** place marker
- rem** remain(ing)
- rep** repeat(ing)
- rnd(s)** round(s)
- RS** right side
- s2kp** slip 2 sts tog as if to k, k1, pass both slipped sts over k st (2 sts dec'd)
- sm** slip marker
- ssk** slip slip knit (1 st dec'd)
- st(s)** stitch(es)
- wyif** with yarn in front
- yo** yarn over

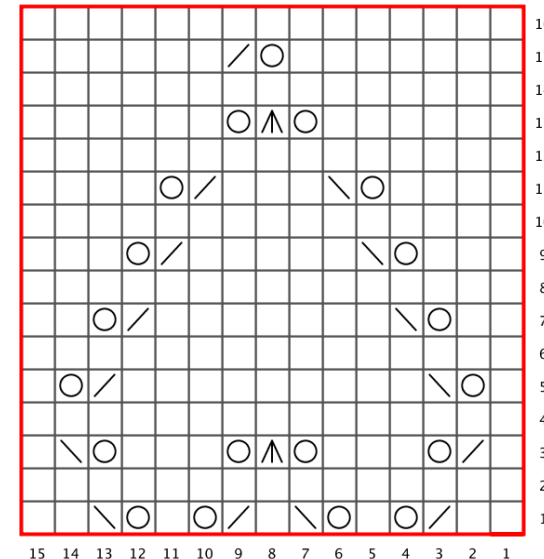
Sweetheart Chart A



Key

- RS: knit
WS: purl
- RS: purl
WS: knit
- yo
- / k2tog
- \ ssk
- ^ s2kp

Sweetheart Chart B



Key

- knit
- yo
- / k2tog
- \ ssk
- ^ s2kp
- patt rep