



## Modern Bouquet Blanket

### FINISHED MEASUREMENTS:

**Length:** 60"

**Width:** 60"

### MATERIALS

**Premier® Yarns Basix® Worsted** (100% Acrylic; 7oz/200g, 359yds/328m)

- A: 1115-61 Buff - 5 balls
- B: 1115-41 Aran - 1 ball
- C: 1115-48 Chocolate - 4 balls
- D: 1115-49 Goldenrod - 4 balls
- E: 1115-36 Leaf - 2 balls
- F: 1115-46 Ember – 1 ball

**Hook:** US Size J-10 (6 mm) hook *or size needed to obtain gauge*

**Notions:** Tapestry needle

**GAUGE** 5 blocks x 5 blocks = 4" in stitch pattern

**Save time, check your gauge.**

### Skills/techniques used in this pattern:

- Chain and double crochet stitch.
- Slip stitch.
- Working Corner to Corner with chart.

### PATTERN NOTES

The Corner-to-Corner (C2C) technique of crochet is made by starting in one corner of a pixel graph (the lower right corner) and following the graph row by row diagonally to the other corner (the top left corner).

**How to Change Colors To join a new color:** Pull the new color yarn through as you make your slip stitch to join over your chain-2 space. Do not fasten off the old color. Leave the strand hanging and still attached to the ball.

By not cutting the yarn each time you change

colors, you'll have fewer loose ends to weave in later. Just keep the balls not being used on the wrong side of your work. Carry the yarn strand up from the previous row and pull it up to your hook when you need to join that color back into your project.

When you begin to have a lot of color changes, it helps to divide the yarn balls by winding into multiple smaller balls.

### How to Read the Graph:

Print out the graph. Start in the lower right corner and mark off each square as you go. Each square in the C2C graph = ch 2, + 3 dc. The first square in the corner is Row 1. You will work diagonally back and forth (down one row and back up the next). Row 2 of the graph will be read diagonally from left to right and Row 3 from right to left.

### BLANKET

Work in C2C technique, changing yarn color following chart.

#### Increase Side

With A, ch 6.

**Row 1:** Dc in 4th ch from hook, dc in next 2 chs, turn – 1 block.

**Row 2:** Ch 6, dc in 4th ch from hook, dc in next 2 chs, (sl st, ch 3, 3 dc) in ch-3 sp of first block, turn – 2 blocks.

**Row 3:** Ch 6, dc in 4th ch from hook, dc in next 2 chs, \*(sl st, ch 3, 3 dc) in ch-3 sp of next block; rep from \* to end, turn – 1 block inc'd.

**Rows 4-70:** Following color chart, Rep Row 3.

Note: At this point, square should measure 60" along each side edge.

# Modern Bouquet Blanket

By Premier® Yarns Design Team

project continued

## Decrease Side

**Row 71:** Ch 1 turn, sl st in first 3 dc, \*(sl st, ch 3, 3 dc) in ch-3 sp of next block; rep from \* to end, sl st in ch-3 sp of last block, turn – 1 block dec'd.

**Row 72:** Sl st in first 3 dc, \*(sl st, ch 3, 3 dc) in ch-3 sp of next block; rep from \* to end, sl st in ch-3 sp of last block, turn.

**Row 73:** Sl st in first 3 dc, \*(sl st, ch 3, 3 dc) in ch-3 sp of next block; rep from \* to end, sl st in ch-3 sp of last block, turn – 1 block dec'd. Rep Row 73 following chart colors until 1 block remains. Fasten off.

## Edging

With RS facing, join C in any corner.

**Rnd 1:** Ch 1, sc evenly around, at a rate of 3 sc per block, working 3 sc for each corner, join with a sl st in first sc.

**Rnd 2:** Ch 2, dc in each st around, working 3 dc in each corner, join with a sl st in first dc.

**Rnd 3:** Ch 1, sc in each st around, working 3 sc in each corner, join with a sl st in first sc. Fasten off.

Weave in ends. Block lightly.

## Abbreviations

ch(s)	chain(s)
dec('d)	decrease(d)
dc	double crochet
inc('d)	increase(d)
rep	repeat(ing)
rnd(s)	round(s)
RS	right side
sc	single crochet
sl st	slip stitch
sp	space

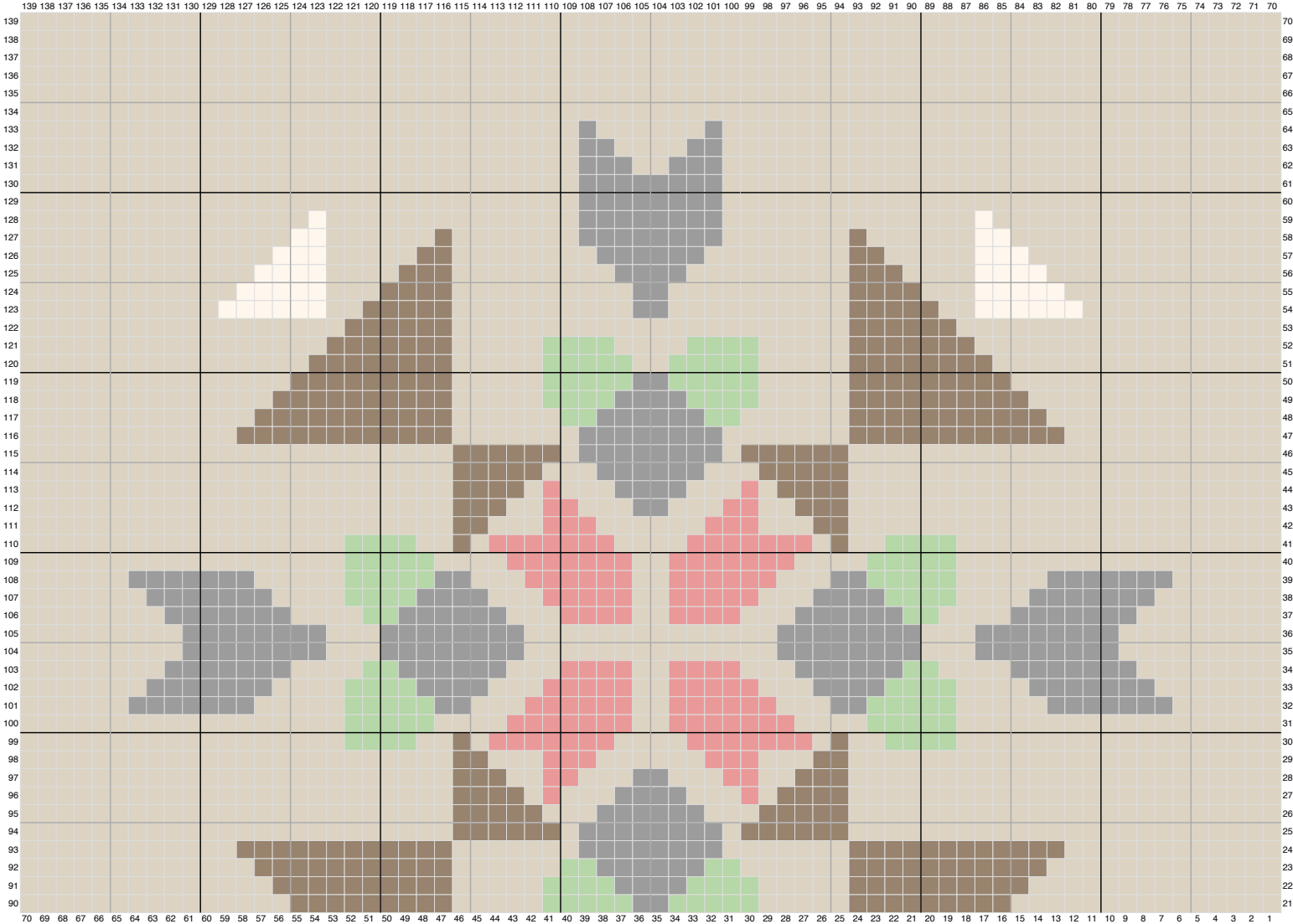


# Modern Bouquet Blanket

By Premier® Yarns Design Team

project continued

Top



C2C Modern Bouquet

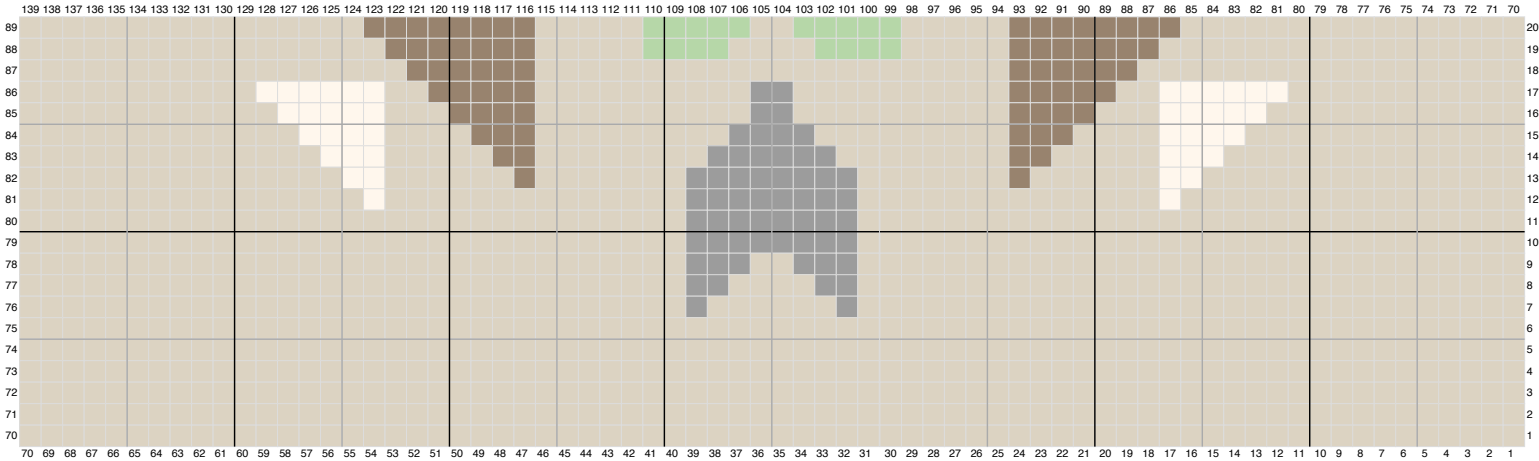


# Modern Bouquet Blanket

By Premier® Yarns Design Team

project continued

## Bottom



### C2C Modern Bouquet

- A
- B
- C
- D
- E
- F