



Slip Stitch Cardigan

Level: Advanced

SIZES

Small (Medium, Large, 1X, 2X, 3X)

FINISHED MEASUREMENTS

Full Bust: 38¾ (42½, 47½, 51, 54, 59)''

Length: 26 (26½, 27, 27½, 28, 28¾)''

MATERIALS

Premier® Yarns Premier® Basix™ DK (100% Acrylic; 3.5oz/100g, 306yds/280m)

- 1142-38 Parchment (MC) – 4 (5, 5, 6, 6, 7) balls
- 1142-42 Mocha (C1) – 1 ball, All Sizes
- 1142-23 Powder Blue (C2) – 1 ball, All Sizes
- 1142-30 Navy (C3) – 1 ball, All Sizes

Needle: US Size 6 (4 mm) and US Size 5 (3.75 mm) circular needles and set of dpns or size needed to obtain gauge

Notions: Tapestry needle, stitch markers, stitch holders or waste yarn

GAUGE

22 sts x 28 rows = 4'' in St st with larger needle

Save time, check your gauge.

STITCH GUIDE

1x1 Rib Flat (odd number of sts)

Row 1 (RS): *K1, p1; rep from * to last st, k1.

Row 2 (WS): *P1, k1; rep from * to last st, p1.

Rep Rows 1-2 for patt.

1x1 Rib in the Rnd (even number of sts)

Rnd 1: *K1, p1; rep from * to end.

Rep Rnd 1 for patt.

Slip Stitch Pattern (multiple 4+3 sts, see chart on page 3)

Row 1 (RS): With C1, k2, *sl1k, k1, rep from * to last st, k1.

Row 2 (WS): With C1, p2, *sl1, p1; rep from * to last st, p1.

Row 3: With C2, k1, *sl1k, k1; rep from * to end.

Row 4: With C2, purl.

Row 5: With C3, k1, *sl1k, k3; rep from * to last 2 sts, sl1k, k1.

Row 6: With C3, p1, * sl1, p3; rep from * to last 2 sts, sl1, p1.

Row 7: With C1, k2, *sl3k, k1; rep from * to last st, k1.

Row 8: With C1, *p3, sl1; rep from * to last 3 sts, p3.

Row 9: With MC, k1, *sl1k, k3; rep from * to last 2 sts, sl1k, k1.

Row 10: With MC, purl.
Rep Rows 1-10 for patt.

Sl1k: Slip 1 knitwise

Sl1: Slip 1 purlwise

Note: On the RS all sts are slipped wyib, on the WS all sts are slipped wyif.

PATTERN NOTES

This Cardigan is worked seamlessly from the top down. The sleeves are picked up and knit in the round. For a fit as shown, choose a size that measures 4-6'' larger than your full bust measurement. Sleeves are worked with extra length so the cuffs can be folded back.

Slip Stitch Cardigan

project continued

By Premier® Yarns Design Team

CARDIGAN

Back

With MC and larger needle, cast on 103 (115, 127, 139, 147, 159) sts, beg **Slip Stitch Pattern** with Row 10. Work even in **Slip Stitch Pattern** until piece meas 6 (6¼, 6½, 7, 7¼, 7½)'' from cast-on edge, end having just worked a WS row. Switch to MC and work even in St st until piece meas 9¼ (9½, 10, 10½, 11¼, 11½)'' from cast-on edge. Cut yarn, place sts on stitch holder or waste yarn.

Right Front

With RS of Back facing, MC and larger needle, pick up and knit 35 (39, 43, 49, 53, 59) sts along top right edge. Work 3 rows even in **Slip Stitch Pattern**, beg with Row 10.

Neck Shaping

*(Note: Cont in **Slip Stitch Pattern** incorporating increased sts, if there are not enough sts for a full rep, work them in St st.)*

Inc Row (RS): Work in patt to 2 sts bef end, kfb, k1 – 1 st inc'd.

All other rows: Work even in patt.

Rep Inc Row every RS row 5 more times - 5 sts inc'd.

Cast on Row (RS): Work in patt to end, cast on 6 (6, 10, 6, 6, 10) sts – 47 (51, 59, 63, 67, 75) sts total.

Cont even in **Slip Stitch Pattern** until piece meas 6 (6¼, 6½, 7, 7¼, 7½)'' from pick up edge, end having just worked a WS row. Switch to MC and work even in St st until piece meas 9¼ (9½, 10, 10½, 11¼, 11½)'' from pick up edge, end having just worked a WS row. Cut yarn, place sts on stitch holder or waste yarn.

Left Front

With RS of Back facing, MC and larger needle, pick up and knit 35 (39, 43, 49, 53, 59) sts along top left edge. Work 3 rows even in **Slip Stitch Pattern**, beg with Row 10.

Neck Shaping

Inc Row (RS): K1, kfb, work in patt to end – 1 st inc'd.

All other rows: Work even in patt.

All other rows: Work even in patt.

Rep Inc Row every RS row 5 more times - 5 sts inc'd.

Cast on Row (WS): Work in patt to end, cast on 6 (6, 10, 6, 6, 10) sts – 47 (51, 59, 63, 67, 75) sts total.

Work even in **Slip Stitch Pattern** until piece meas 6 (6¼, 6½, 7, 7¼, 7½)'' from pick up edge, end having just worked a WS row. Switch to MC and work even in St st until piece meas 9¼ (9½, 10, 10½, 11¼, 11½)'' from pick up edge, end having just worked a WS row.

Join Fronts and Back

Next Row (RS): In St st and MC, work across Left Front, place Back sts on working needle and work across Back, place Right Front sts on working needle and work across Right Front – 197 (217, 245, 265, 281, 309) sts total.

Cont in est'd patt until piece meas 14'' from Join, end having just worked a WS row.

Hem

Switch to smaller needle and with MC, work even in **1x1 Rib Flat** until Hem meas 3''. Loosely bind off all sts in rib.

Note: If an extra long sleeve is not desired, even rows can be eliminated to adjust to your preferred length.

Sleeves

With larger dpns and MC, pick up and knit 100 (104, 110, 116, 122, 122) sts around armhole opening, pm and join for working in the rnd. Work 6 (4, 4, 2, 2, 2) rnds even in St st.

Dec Rnd: K1, k2tog, knit to last 3 sts, ssk, k1 – 2 sts dec'd.

All other rnds: Knit.

Rep Dec Rnd every 6th rnd 11 (9, 3, 0, 0, 0) more times, every 4th rnd 9 (13, 22, 24, 22, 22) times and every other rnd 0 (0, 0, 4, 8, 8) times – 40 (44, 50, 56, 60, 60) sts dec'd, 58 (58, 58, 58, 60, 60) sts rem. Work even in St st until Sleeve meas 17½ (17½, 17½, 16, 16, 16)'' from underarm.

Cuffs

Switch to smaller dpns, work even in **1x1 Rib in the Rnd** until Cuff meas 3'', loosely bind off all sts in rib. Repeat for other sleeve.

FINISHING

Collar

With RS facing, smaller needle and MC, pick up and knit 67 (71, 81, 69, 71, 83) sts along neckline. Work even in **1x1 Rib Flat** until Collar meas 1''. Loosely bind off sts in rib.

Front Left Band

With RS facing, smaller needle and MC, pick up and knit 113 (117, 119, 121, 123, 125) sts along Left Front and Collar edge. Work even in **1x1 Rib Flat** until Band meas 1½''. Loosely bind off sts in rib.

Slip Stitch Cardigan

project continued

By Premier® Yarns Design Team

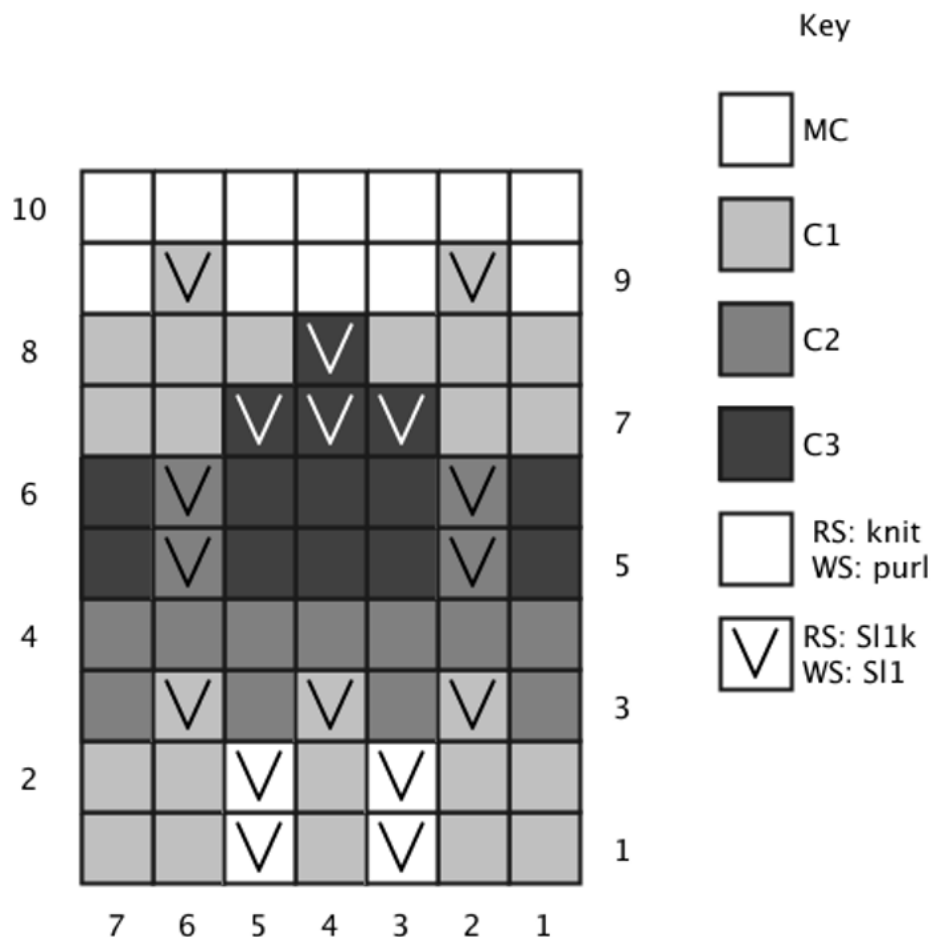
Front Right Band

With RS facing, smaller needle and MC, pick up and knit 113 (117, 119, 121, 123, 125) sts along Right Front and Collar edge. Work even in **1x1 Rib Flat** until Band meas 1½". Loosely bind off sts in rib.

Weave in ends.

Abbreviations

beg begin(ning)
C color
cont continue
dec('d) decrease(d)
dpn(s) double point needle(s)
inc('d) increase(d)
k knit
kfb knit into the front and back of the next st (1 st inc'd)
k2tog knit 2 sts together (1 st dec'd)
MC main color
meas measures
p purl
patt pattern
pm place marker
rem remain(ing)
rep repeat(ing)
ssk slip slip knit (1 st dec'd)
st(s) stitch(es)
St st Stockinette stitch: knit on RS rows, purl on WS rows.
St st Stockinette stitch: knit every rnd.
WS wrong side



Slip Stitch Cardigan

project continued

By Premier® Yarns Design Team



PREMIER®