



## Pattern Collection: Children



### All-Star Pullover

Designed by Universal Yarn Design Team

### SIZES

1 (2, 4, 6, 8, 10) year

### FINISHED MEASUREMENTS

**Chest:** 20 (21½, 23½, 25½, 27½, 29)''

**Length:** 11½ (13, 14½, 16, 17½, 18½)''

### MATERIALS

**Universal Yarn Cotton Supreme** (100% cotton; 100g/180 yds)

- 510 Magenta (MC) – 2 (2, 2, 3, 3, 4) hanks
- 511 Pink (CC) – 1 hank, all sizes

**Needles:** US Size 8 (5 mm) straight and set of dpns *or size needed to obtain gauge*

US Size 6 (4 mm) straight

**Notions:** Tapestry needle, stitch markers

### GAUGE

17 sts x 23 rows = 4'' in St st

**Save time, check your gauge**

*Knit, Relax, Smile, Repeat!*

2016 © Universal Yarn, Inc.

All rights reserved.

[www.universalyarn.com](http://www.universalyarn.com)

This pattern may not be reproduced for business, trade or sale.

## PATTERN NOTES

This sweater is knit in pieces and seamed. The star motifs are worked by using the intarsia technique of changing colors. Use a separate length of color for each section.

## STITCH GUIDE

### 2x2 Ribbing

(multiple of 4 sts + 2)

**Row 1 (RS):** \* K2, p2; rep from \* to last 2 sts, k2.

**Row 2 (WS):** \* P2, k2; rep from \* to last 2 sts, p2.  
Rep Rows 1-2 for patt.

## BACK

With MC, cast on 42 (46, 50, 54, 58, 62) sts.

### Hem

Work in 2x2 Ribbing until piece meas 1½" from cast-on edge, ending with WS row.

### Main Back

Switch to larger ndl. Work in St st until piece meas 2" from cast-on edge, ending with WS row. With CC, work 6 rows in St st. With MC, work in St st for 1½ (2, 2½, 3, 3½, 3¾)". With CC, work 6 rows in St st. With MC, work in St st until piece meas 7 (8, 9, 10, 11, 11½)" from cast-on edge. Place removable marker each edge to indicate beg of armholes.

Work in St st until piece meas 4½ (5, 5½, 6, 6½, 7)" from armhole markers, ending with WS row. Bind off all sts.

## FRONT

Work as for Back until piece meas 2 (2½, 2½, 3, 3¼, 3¾)" from armhole markers, ending with WS row.

### Shape Neck

**Row 1 (RS):** K17 (17, 19, 20, 21, 24), attach new ball of yarn and bind off center 8 (12, 12, 14, 16, 14) sts, knit to end. Working both sides at once, dec 1 st at Neck edge every RS row, 6 (6, 7, 7, 7, 8) times – 11 (11, 12, 13, 14, 16) sts rem each side. Work even in St st, if necessary, until pieces meas 4½ (5, 5½, 6, 6½, 7)" from armhole markers, ending with WS row. Bind off all sts.

## SLEEVES

With MC and smaller ndl, cast on 30 (34, 38, 42, 44, 48) sts.

## Cuff

Work in 2x2 Ribbing until piece meas 1 ½" from cast-on edge, ending with a WS row, and inc'ing 1 st on last row – 31 (35, 39, 43, 45, 49) sts.

## Main Sleeve

**Row 1 (RS):** K7 (9, 11, 13, 14, 16), pm, k17, pm, knit to end. Purl a WS row.

**Inc row (RS):** K1, m1, knit to last st, m1, k1 – 2 sts inc'd. Rep Dec row every 4 (6, 6, 8, 6, 6) rows, 3 (3, 3, 3, 4, 4) more times – 39 (43, 47, 51, 55, 59) sts.

At the same time, when Sleeve meas 2 (2½, 3, 3½, 4, 4½)", work Rows 1-20 of Star chart over center 17 sts. When Sleeve meas 4½ (5, 5½, 6, 6½, 7)", end with a WS row. Bind off all sts.

## FINISHING

Block pieces. Sew shoulder seams. Sew Sleeves to body. Sew Sleeve and side seams.

### Neck Edging

With MC and smaller dpns, pick up and knit 20 (24, 26, 28, 30, 30) sts across Back Neck and 28 (32, 36, 38, 38, 42) sts across Front Neck. Join to work in the rnd.

**Rnds 1-4:** \* K2, p2; rep from \* to end. Bind off all sts loosely in patt. Weave in ends.

## Abbreviations

<b>CC</b>	contrast color
<b>dec('d)</b>	decrease(d)
<b>inc('d)</b>	increase(d)
<b>k</b>	knit
<b>m</b>	marker
<b>m1</b>	make 1 stitch
<b>MC</b>	main color
<b>meas</b>	measures
<b>ndl</b>	needle
<b>patt</b>	pattern
<b>p</b>	purl
<b>pm</b>	place marker
<b>rem</b>	remain(ing)
<b>rep</b>	repeat
<b>rnd</b>	round
<b>RS</b>	right side
<b>st(s)</b>	stitch(es)
<b>St st</b>	Stockinette stitch (knit on RS rows, purl on WS rows; in the rnd, knit every rnd)
<b>tog</b>	together
<b>WS</b>	wrong side

*Knit. Relax. Smile. Repeat!*

2016 © Universal Yarn, Inc.

All rights reserved.

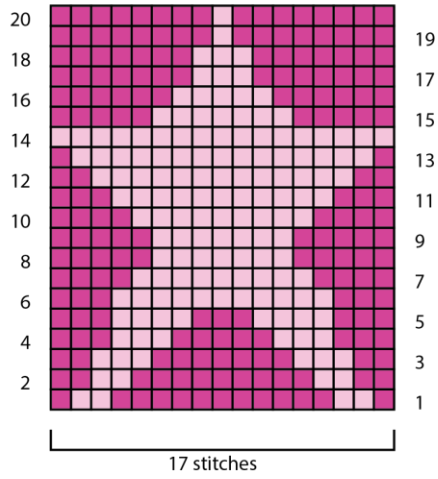
www.universalyarn.com

This pattern may not be reproduced for business, trade or sale.

Star

Key

- with MC, knit on RS, purl on WS
- with CC, knit on RS, purl on WS



*Knit, Relax, Smile, Repeat!*

2016 © Universal Yarn, Inc.

All rights reserved.

[www.universalyarn.com](http://www.universalyarn.com)

This pattern may not be reproduced for business, trade or sale.