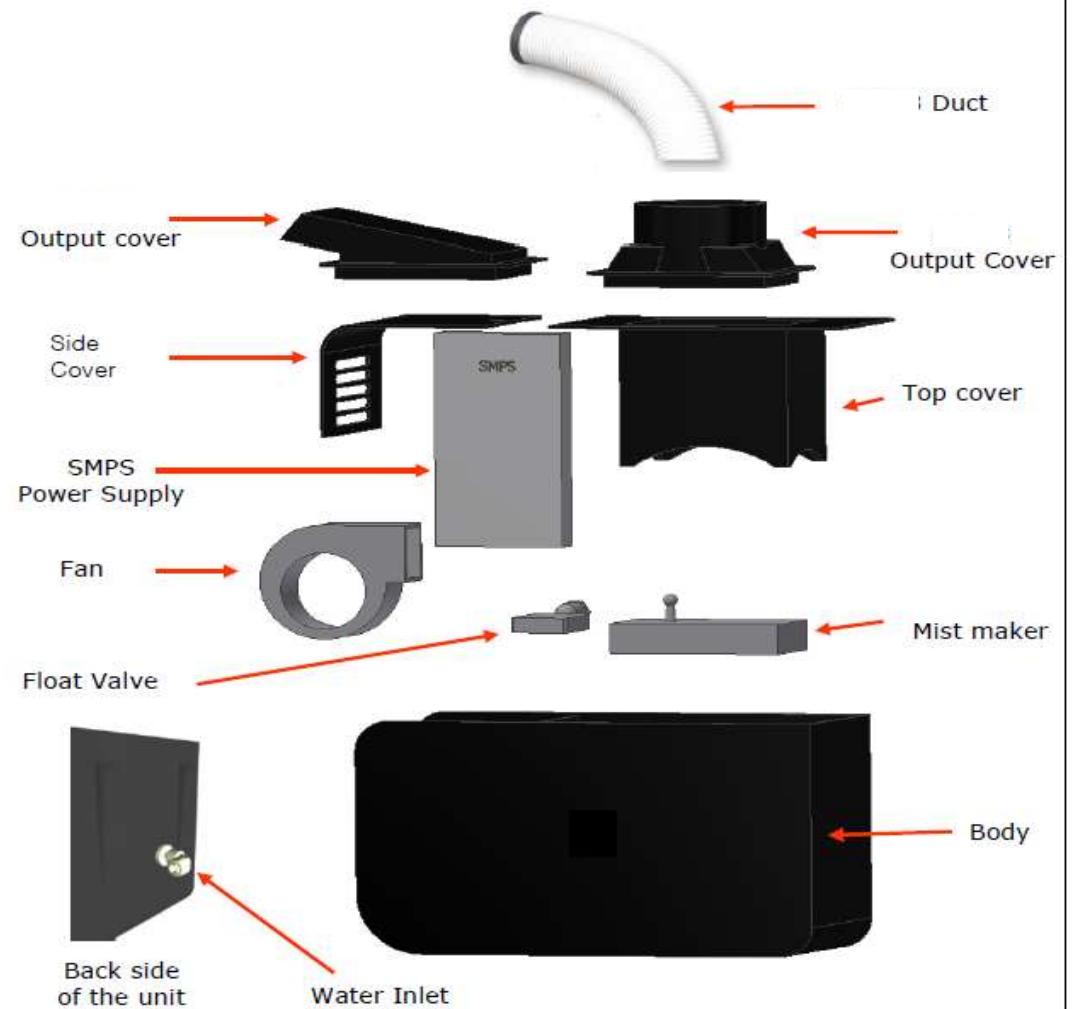


Item	Ultrasonic Humidifier
Power supply	110VAC 220VAC (special order)
Power consumption	340W / 4.8A
Particle size	4~7 μ m
Humidification capacity	Approximately 0.75 Gallons / Hour
Noise level	about 48dB
Water pressure	Less than 42 Lbs / Sq In
Lifespan of mist maker	2,500~3,000 hours
Weight	16 lbs empty Approximately 21 lbs wet
Coverage	Maximum 4000 CuFt
Dimensions	18" Wd X 9.25" Ht x 6.5" Dp ※ SH-1 duct size : H20"X4"Φ



Installation

1. Insert the attached Elbow fitting into the white plastic pipe on the back side of the unit.
2. Connect the ¼" water line from the Reverse Osmosis water filter to the "L" fitting
3. Allow water to fill for 10 minutes before powering unit up.
4. Power unit up after the water has filled and the float valve has stopped the flow. On initial startup, the unit will increase the misting density for the first 30 minutes while it breaks in. The Unit may take up to 20 seconds to start the first few times.

(Installation of Digital Humidistat

1. Connect the humidifier's power cord into the HUMIDITY socket on the bottom of the humidistat LITE-F.
2. Push the humidity set button and set required humidity level with push arrow buttons.

Maintenance and cleaning

1. Disconnect the water line and the power cord.
* When disconnecting the water line, pull the water line while pushing the connecting point of the water line and the "L" fitting.
2. Remove the three (3) screws on the humidifier's top cover, and remove cover.
3. Remove dirt and clean up the inside of the unit with soft brush and water.
4. Re-assemble the unit in reverse order and supply the water about 10 minutes before supply the power. Be careful not to over tighten the screws when re-assembling the top cover.
(Do not plug in the power without the water filled at the certain water level, this could cause the mist maker to fail.)

Notice

1. Please supply clean water. Water quality is directly connected to the humidifier's lifespan.
(A reverse osmosis water filter system is required for the warranty).
2. Regular cleaning is highly recommended for the humidifier's lifespan and cleanliness. Use a soft bristle brush to clean the silver sonic generator plate and the tank area walls, rinse a few times.
3. This humidifier is ultrasonic, white powder can occur if Reverse Osmosis water is not used.
4. Please level the unit before operating.
5. Please do not move or bump the unit during the operating.
6. One year limited warranty from the purchasing date.

Humidistat model No.

Humidistat model No.

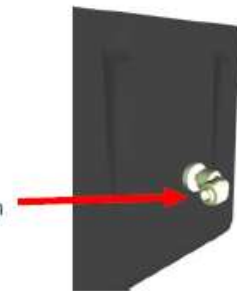


Insert into humidity side →

Humidifier's power cord →



Water pipe connection



User Manual

(Digital Humidistat)



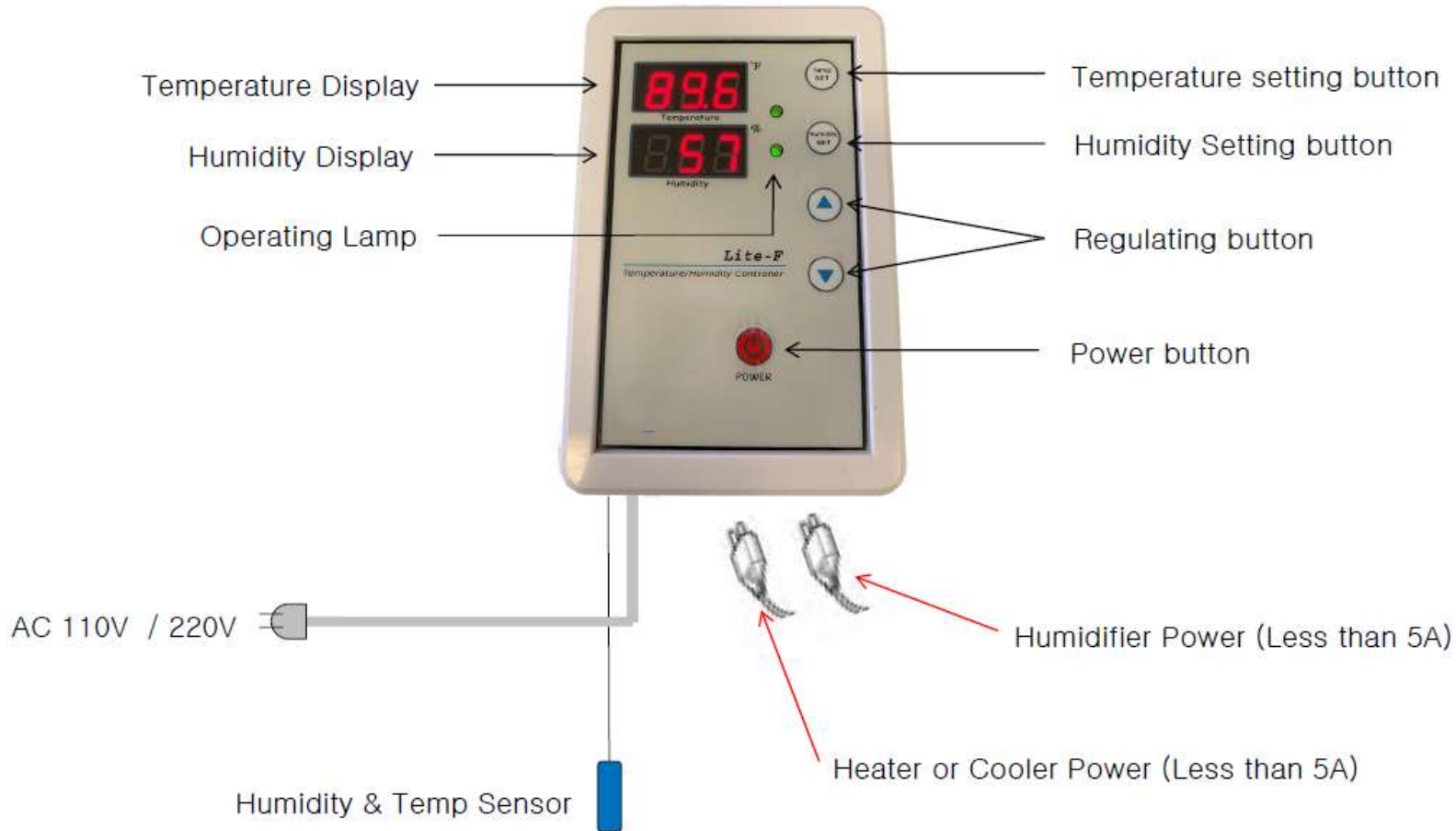
Features & Specifications



- Easy to operate.
- Simple construction.
- High durability.
- Temperature & Humidity control

Model No.	F
Item	Digital humidistat
Power Supply	110VAC~220VAC
Size	122(W) X 188(H) X 57(D)
Measurement range	5% ~ 99%
Measurement sensor	NTC(5KΩ 75 F), HM(5V)
Control (Output)	ON/OFF (AC110/250V 5A)
Usable Temperature	-4℃ ~ 140℃

Legend



Controller Settings

Press the Humidity Setting Button once then use the arrow buttons to select the desired humidity level. The Controller will keep your new setting and display the current humidity in a few seconds.

To change the other settings, hold the Humidity Set button down for 10 seconds until the screen changes to “typ”

Once the screen shows “typ” press Humidity Set once. The screen should show “H”. This confirms the Controller is set in Humidifier mode. The Controller must be in Humidifier mode so that it turns on the Humidifier when the detected level falls below your setting. **DO NOT SET IN “d” MODE.** This mode works opposite of what humidifier operators want. If the screen shows “d”, use the arrow keys to change it back to “H”

Clicking the Humidity Set button again will move into the Output Delay mode. This setting is useful to prevent the Controller from switching the humidifier on and off repeatedly. This can happen in a stable humidifier when the humidity drops below the set point, then the humidifier turns on and raises the humidity 1 point. The Controller then turns the humidifier off and the humidity drifts back down a point and the controller turns the humidifier back on. This is not good for the humidifier. To prevent this, simply set the controller “dLE” Output Delay setting to 20 or 30. This setting is in seconds. This will help greatly in a situation where the humidifier is being cycled rapidly.

Clicking the Humidity Set button again will move into the Output Difference mode. This setting is similar to the Output Delay Mode. This setting tells the Controller to switch the Humidifier back on once the humidity reading falls below the desired level by a certain RH point. The Controller comes set with an Output Difference of 1. This means that if you have the humidity set to maintain 70%, the Controller will turn the Humidifier on when the detected level is 69% or lower. If you set the Output Difference to 2 in this same situation, the Controller would wait until 68% to turn the Humidifier on. As with the previous setting, it is useful to prevent the Controller from switching the humidifier on and off repeatedly.

Clicking the Humidity Set button again will move into the Correction mode. This setting is used to adjust the Controller's Humidity Detection Sensor. If the Controller is reading incorrectly, you can use this setting to “re-calibrate” the Controller. If you are certain that the Controller is not reading the correct humidity level, use this setting to move the reading up or down. If you have used this setting, it is recommended that you check the humidifier humidity level frequently so as not to under or over humidify your cigars.

Once you have completed any changes to the settings, simply do nothing and the Controller will return back to normal operation within a few seconds.

Warranty

Elegant bar warrants our humidifiers and controllers against defects in materials or workmanship for a period of one year after date of purchase. at its option will either repair or replace systems that prove to be defective. Warranty repair is completed at our warehouse in Houston, TX. Customer is responsible for packaging and shipping the system back for repair. Please take extra precaution when packing the system for return so that damage is not caused during shipping. Please use the box the unit came in if possible. Extra packing may be required. Repairs are usually made with 1-2 business days. Please call to confirm that you are shipping a system back to us and please include return address and company information.

EXCLUSIONS:

The warranty of your Humidifier system only applies to the original purchaser and may not be transferred. This warranty only covers defects arising under normal usage and shall not apply to defects or damage resulting from modifications, repairs made by you or misuse.

LIMITATIONS:

No other warranty, whether written or oral, is expressed or implied. Under no circumstances shall Your Elegant bar be liable for any loss or damage, direct, consequential, or incidental arising out of the use of or inability to use this product. Some states or provinces do not allow limitations on how long an implied warranty lasts, so the above exclusions may not apply to you. However, any implied warranty of merchantability or fitness is limited to the one-year duration of this written warranty

Your Elegant Bar

<https://yourelegantbar.com/>

Email: support@yourelegantbar.com

Phone: 888.501.3227