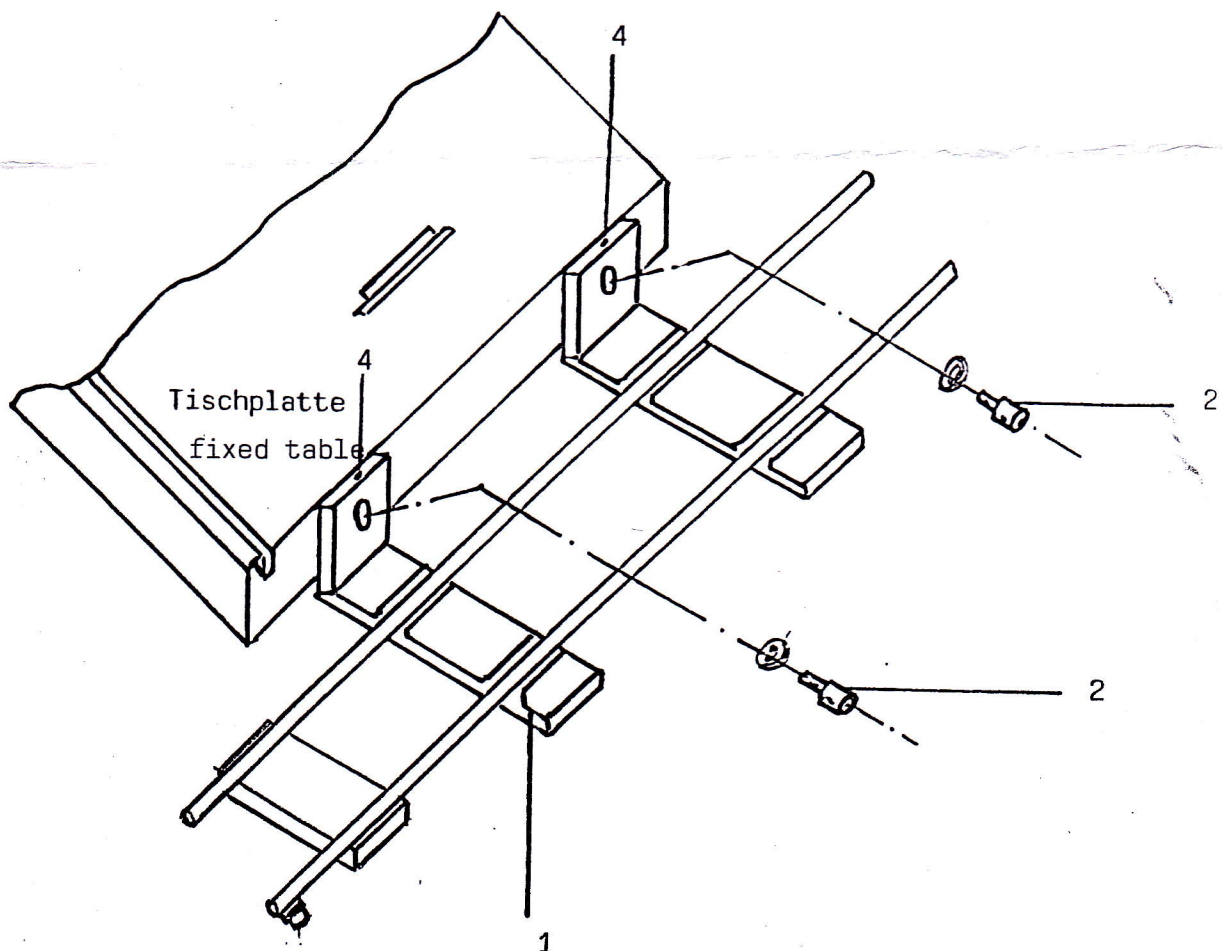


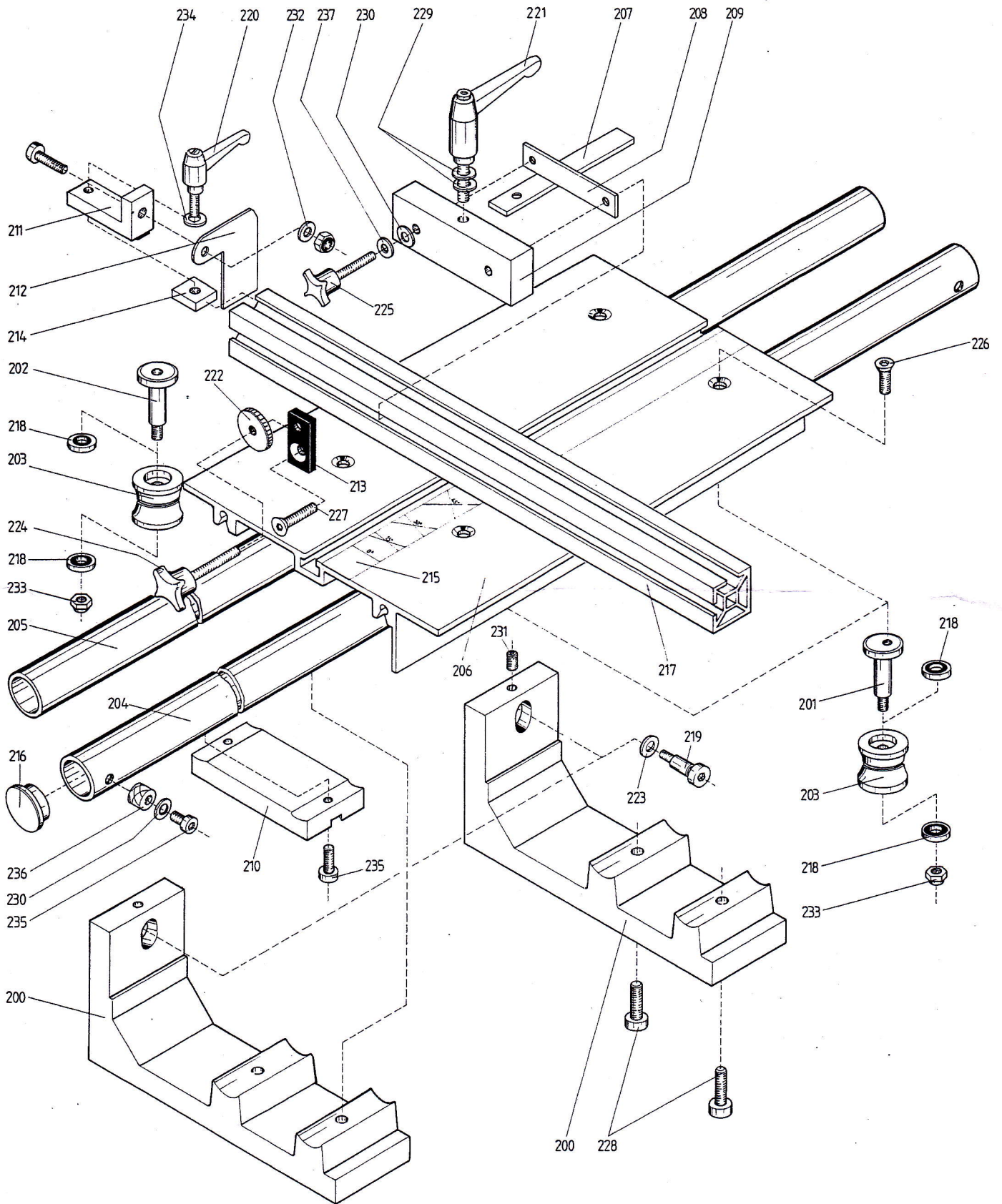
Attach the complete sliding table assembly to the MK 4 saw table using the machine screws No. 2 with washers.

The sliding table surface should be approximately .020" (0,5 mm) above the fixed table surface. This is adjusted as follows.

Slightly loosen the two No. 2 machine screws. Adjust set screws No. 4 until the correct height is achieved. Be sure table is level. Finally, retighten No. 2 screws.



# MK 4 Sliding Table Parts Numbers



## MK 4 Sliding Table Parts List

Item No.	Name	Quantity
200	Mainframe support bracket	2
201	Outer roller support bolt	2
202	Inner roller support bolt	2
203	Roller	4
204	Right rail	1
205	Left rail	1
206	Table	1
207	Fence guide rail	1
208	Fence mounting rail	1
209	Fence anchor block	1
210	Rail stabilizer	1
211	Cutoff stop block	1
212	Cutoff stop	1
213	Micro-adjustment block	2
214	Cutoff stop hold-down block	1
215	Scale	1
216	End cap	2
217	Crosscut fence	1
218	Ball bearing 688zz	8
219	Mainframe shoulder bolt M 6x12 mm	2
220	Adjustable lever M 5x1 mm	1
221	Adjustable lever M 6x40 mm	1
222	Locking nut	2
223	Flat washer 8x16x3 mm	2
224	Thumbscrew 6x32 mm	2
225	Thumbscrew 5x30 mm	2
226	Countersunk screw M 5x8 mm	4
227	Countersunk screw M 6x16 mm	2
228	Allen screw M 5x20 mm	4
229	Washer M 6	2
230	Washer M 5	4
231	Threaded pin M 5x6 m	2
232	Spring washer M 6	1
233	Hex nut M 6	4
234	Washer 5.1x9x2 mm	1
235	Allen screw M 5x16 mm	4
236	Rubber bumper	2
237	Washer 5.1x9x3.2 mm	2