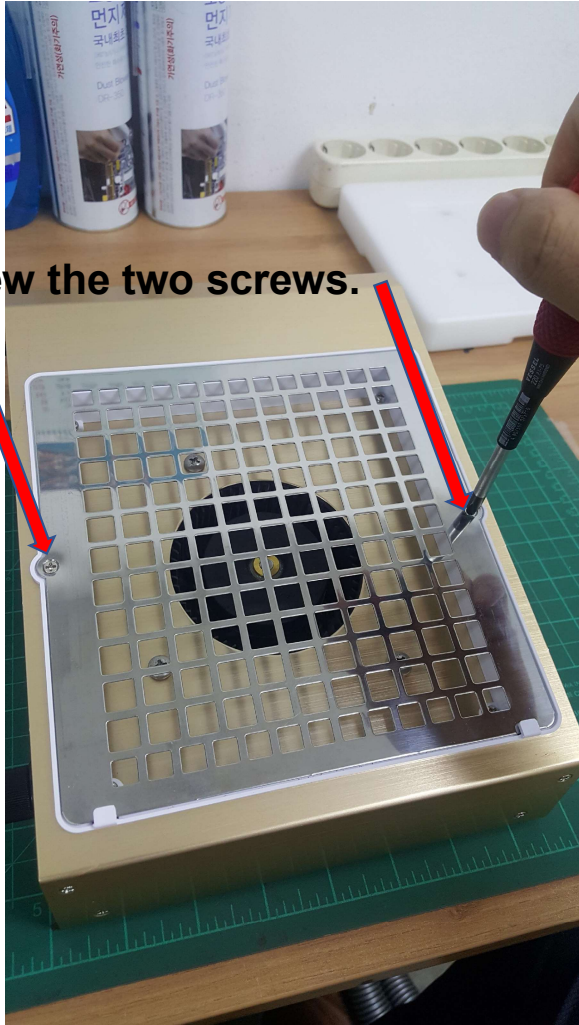


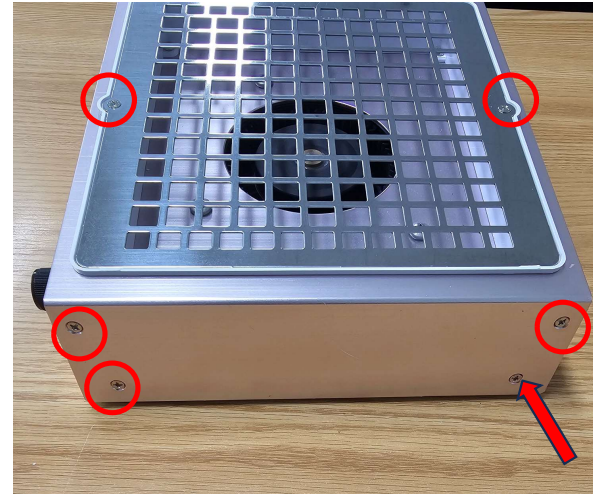
To check for fan faults

Unscrew the two screws.

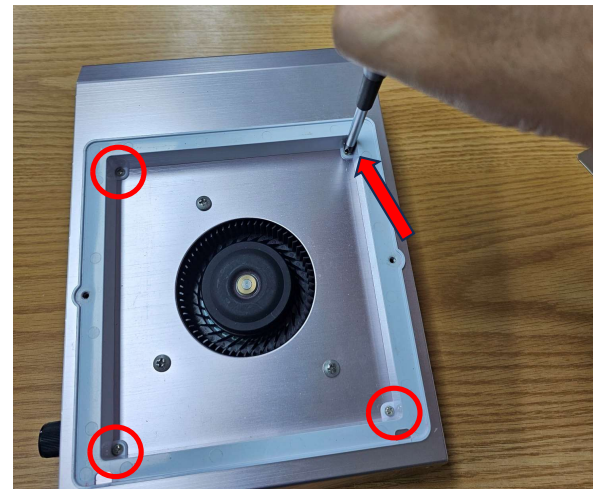
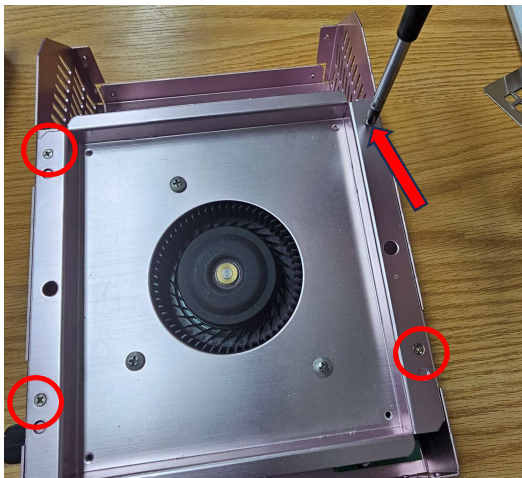


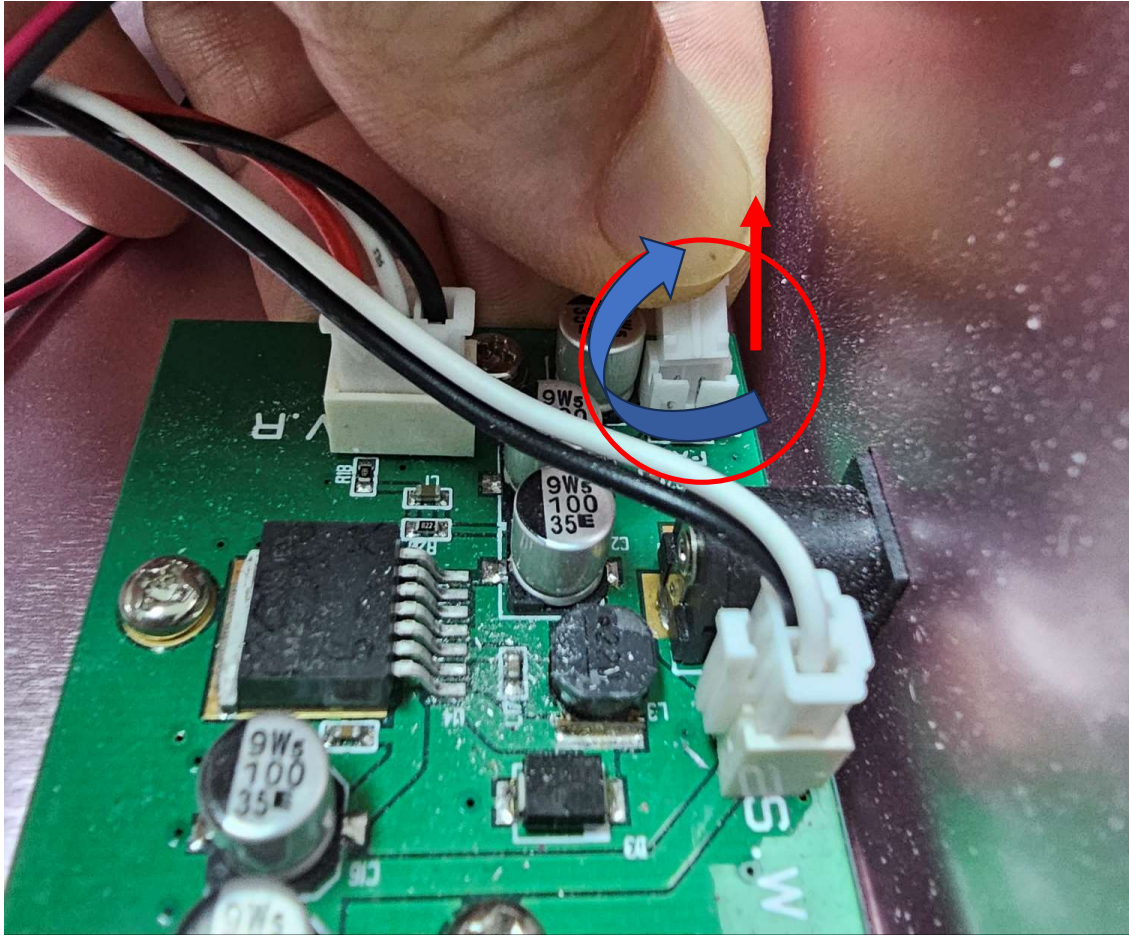
Hold the fan with your hands and rotate it as shown in the picture.
If you don't rotate the fan or you hear a noise, there are nail parts in the fan.

Replace the fan in the same way as shown

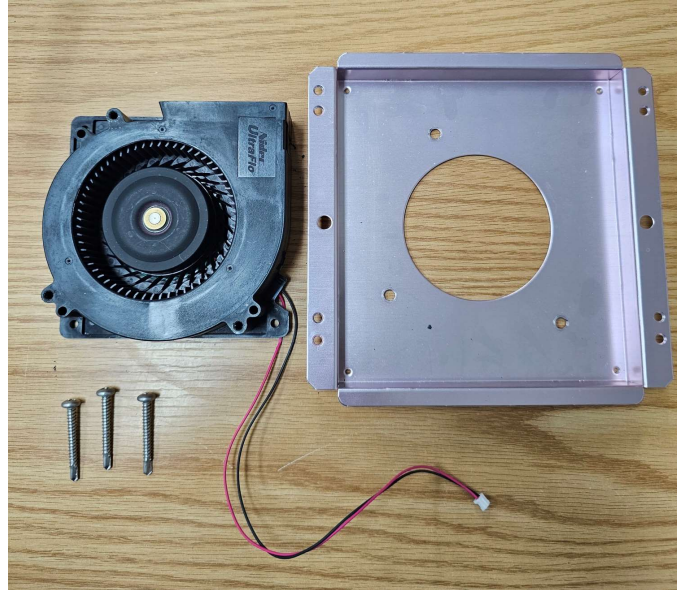
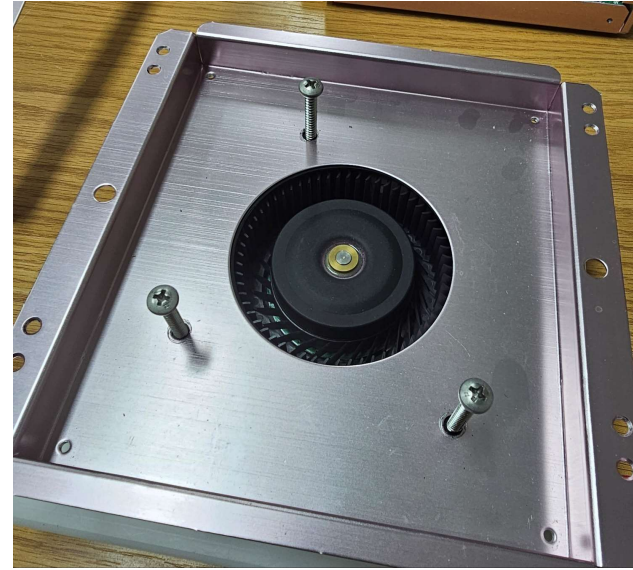
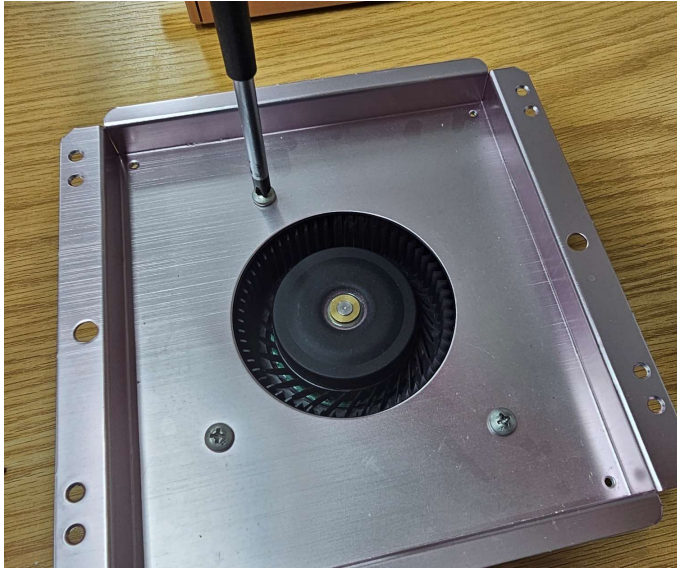


Use a screwdriver to loosen the four screws on each illustration

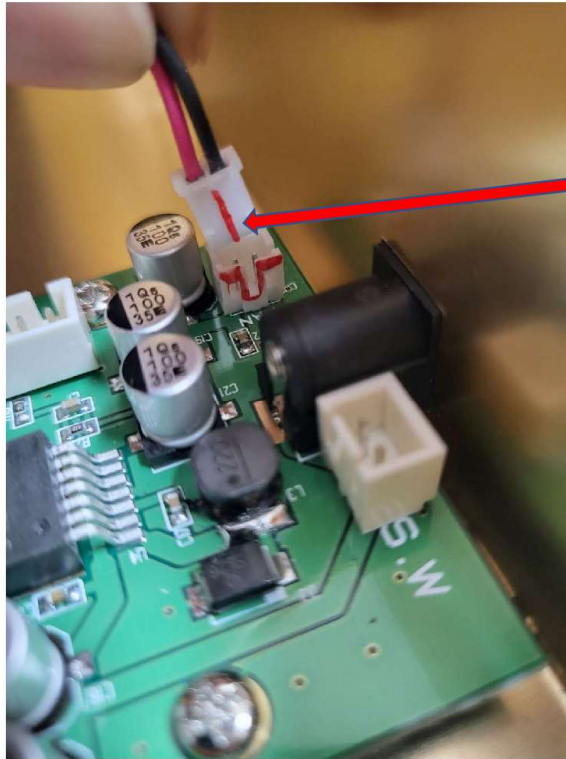




Pull it up with a slight tilt back as shown.



Loosen the screw and remove the fan as shown in the picture. Then replace it with a new fan and reassemble it in the opposite order.



When inserting the fan connector, the protrusion of the connector shall be inserted into the red part of the PCB.

If the PCB is replaced but does not work, replace the switch as well.