

BATTERY SAFETY INFORMATION

Read and abide by **WARNING** notice below for your safety.

قراءة وإلتزام بالتحذير أدناه من أجل سلامتك. اقرأ ملاحظة التحذير أدناه بعناية.
 Прочитайте и соблюдайте приведенное ниже предупреждение для вашей безопасности.
 Leggere e rispettare le avvertenze riportate di seguito per la vostra sicurezza.
 安全のため、下記の警告事項をよく読み、それに従ってください。
 Lea y respete el siguiente aviso de advertencia para su seguridad.
 안전을 위해 아래 경고주의 사항을 읽고 준수하십시오.
 Lesen Sie sich zu Ihrer Sicherheit die unten stehenden Warnhinweise durch.



WARNING: LI-ION CELLS HAVE INHERENT RISKS IF MISUSED or MISHANDLED. CELL CAN EXPLODE CAUSING SEVERE BURN INJURY, FATALITY, AND PROPERTY DAMAGE.



READ BELOW THOROUGHLY.

CELL = BATTERY

- **KEEP OUT OF REACH** of anyone under 18 years of age, AND pets.
- **DO NOT PUT IN FIRE**, oven, microwave, or expose to anything over 100°C (212°F).
- **DO NOT CARRY** or store **OUTSIDE** of its protective packaging or a **PROTECTIVE CELL CASE**.
- **DO NOT PUT CELL IN POCKET**, bag, purse, or anywhere **WITH METAL OBJECTS** including **COINS** and **KEYS**. Otherwise, the cell could short-circuit and explode.
- **DO NOT PUT A DEVICE WITH CELL INSTALLED IN POCKET or ON YOUR BODY**. A device malfunction or conductive debris or objects in pocket can overload or short-circuit cell and explode. As a safety precaution, do not carry a device in pocket or on your body.
- **DO NOT USE IN A DEVICE THAT CAN EXCEED MAX CELL WATTAGE (W) OR AMPERAGE (A)** (listed on each cell and packaging). Doing so can overload cell(s) causing it to explode.
- **DO NOT USE LOWER RESISTANCE (Ω) #** (listed on each cell and retail packaging).
- **DO NOT USE CELL WITH DAMAGE TO ITS STRUCTURE OR OUTER PROTECTIVE LABEL** (also called "WRAP", "sleeve", "skin"). Damage may include: dent(s), tear(s), nick(s), puncture(s), corrosion, or any other abnormalities or undisclosed damage(s).
- **DO NOT LEAVE UNATTENDED WHILE CHARGING & REMOVE CELL(S) ONCE FULLY CHARGED** to ensure it is not exposed to any potential charger malfunction such as overcharging.
- **DO NOT CHARGE ABOVE MAX CHARGE VOLTAGE (V)** (typically 4.2V) **or DISCHARGE BELOW MAX VOLTAGE CUT-OFF (V)** (typically 2.5V). Doing so can damage cell and explode.
- **DO NOT MIX WITH USED OR DIFFERENT TYPE OF CELL(S)**. Differences in capacity can lead to one or more cells to be overcharged / over-discharged and cause it to explode.
- **IF USING A MULTI-CELL DEVICE**, the device **MUST HAVE A NON-CONDUCTIVE BARRIER** (typically plastic) **OR FITMENT THAT PREVENTS CELL(S) FROM TOUCHING THE SIDE(S) OF ONE ANOTHER OR ANY ADJACENT METAL** except for center of top & bottom of each cell. Otherwise, cell(s) can short-circuit and explode.
- **ALWAYS** use, connect, charge, and operate cells within their capabilities as listed on cell and packaging, while adhering to the device's user manual.
- **COMPLETELY READ** and follow the **WARNING (⚠)** listed on cell, packaging, and on the product detail pages of www.HohmTech.com.
- **VISIT** www.HohmTech.com for greater detail on safety and technical information.
- **SEARCH** www.YouTube.com for **"18650 EXPLOSIONS"** to understand the importance of consistently taking safety precautions and using Li-ion cells properly. Hohm Tech advocates recycling and replacing any damaged Li-ion cell.

BATTERY SAFETY INFORMATION

Read and abide by **WARNING** notice below for your safety.

قراءة وإلتزام بالتحذير أدناه من أجل سلامتك. اقرأ ملاحظة التحذير أدناه بعناية.
 Прочитайте и соблюдайте приведенное ниже предупреждение для вашей безопасности.
 Leggere e rispettare le avvertenze riportate di seguito per la vostra sicurezza.
 安全のため、下記の警告事項をよく読み、それに従ってください。
 Lea y respete el siguiente aviso de advertencia para su seguridad.
 안전을 위해 아래 경고주의 사항을 읽고 준수하십시오.
 Lesen Sie sich zu Ihrer Sicherheit die unten stehenden Warnhinweise durch.



WARNING: LI-ION CELLS HAVE INHERENT RISKS IF MISUSED or MISHANDLED. CELL CAN EXPLODE CAUSING SEVERE BURN INJURY, FATALITY, AND PROPERTY DAMAGE.



READ BELOW THOROUGHLY.

CELL = BATTERY

- **KEEP OUT OF REACH** of anyone under 18 years of age, AND pets.
- **DO NOT PUT IN FIRE**, oven, microwave, or expose to anything over 100°C (212°F).
- **DO NOT CARRY** or store **OUTSIDE** of its protective packaging or a **PROTECTIVE CELL CASE**.
- **DO NOT PUT CELL IN POCKET**, bag, purse, or anywhere **WITH METAL OBJECTS** including **COINS** and **KEYS**. Otherwise, the cell could short-circuit and explode.
- **DO NOT PUT A DEVICE WITH CELL INSTALLED IN POCKET or ON YOUR BODY**. A device malfunction or conductive debris or objects in pocket can overload or short-circuit cell and explode. As a safety precaution, do not carry a device in pocket or on your body.
- **DO NOT USE IN A DEVICE THAT CAN EXCEED MAX CELL WATTAGE (W) OR AMPERAGE (A)** (listed on each cell and packaging). Doing so can overload cell(s) causing it to explode.
- **DO NOT USE LOWER RESISTANCE (Ω) #** (listed on each cell and retail packaging).
- **DO NOT USE CELL WITH DAMAGE TO ITS STRUCTURE OR OUTER PROTECTIVE LABEL** (also called "WRAP", "sleeve", "skin"). Damage may include: dent(s), tear(s), nick(s), puncture(s), corrosion, or any other abnormalities or undisclosed damage(s).
- **DO NOT LEAVE UNATTENDED WHILE CHARGING & REMOVE CELL(S) ONCE FULLY CHARGED** to ensure it is not exposed to any potential charger malfunction such as overcharging.
- **DO NOT CHARGE ABOVE MAX CHARGE VOLTAGE (V)** (typically 4.2V) **or DISCHARGE BELOW MAX VOLTAGE CUT-OFF (V)** (typically 2.5V). Doing so can damage cell and explode.
- **DO NOT MIX WITH USED OR DIFFERENT TYPE OF CELL(S)**. Differences in capacity can lead to one or more cells to be overcharged / over-discharged and cause it to explode.
- **IF USING A MULTI-CELL DEVICE**, the device **MUST HAVE A NON-CONDUCTIVE BARRIER** (typically plastic) **OR FITMENT THAT PREVENTS CELL(S) FROM TOUCHING THE SIDE(S) OF ONE ANOTHER OR ANY ADJACENT METAL** except for center of top & bottom of each cell. Otherwise, cell(s) can short-circuit and explode.
- **ALWAYS** use, connect, charge, and operate cells within their capabilities as listed on cell and packaging, while adhering to the device's user manual.
- **COMPLETELY READ** and follow the **WARNING (⚠)** listed on cell, packaging, and on the product detail pages of www.HohmTech.com.
- **VISIT** www.HohmTech.com for greater detail on safety and technical information.
- **SEARCH** www.YouTube.com for **"18650 EXPLOSIONS"** to understand the importance of consistently taking safety precautions and using Li-ion cells properly. Hohm Tech advocates recycling and replacing any damaged Li-ion cell.



KEEP YOUR LABEL 100% INTACT



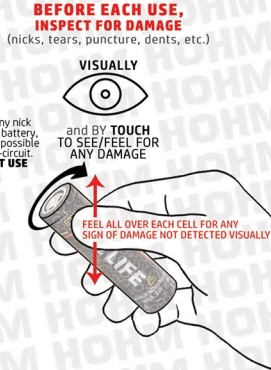
GOOD CELL
 This cell's label ("wrap") is fully intact with no sign of nicks/tears or punctures. If it is the correct size & meets the amp or watt rating of device, it is ready to use.

READY TO USE



BAD CELL
 This cell's label ("wrap") is compromised and considered a damaged cell. This cell should be recycled and replaced immediately.

DO NOT USE



KEEP YOUR LABEL 100% INTACT



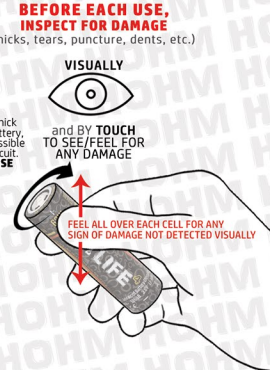
GOOD CELL
 This cell's label ("wrap") is fully intact with no sign of nicks/tears or punctures. If it is the correct size & meets the amp or watt rating of device, it is ready to use.

READY TO USE



BAD CELL
 This cell's label ("wrap") is compromised and considered a damaged cell. This cell should be recycled and replaced immediately.

DO NOT USE



HOHM TECH CELLS:
 PSE CERTIFIED
 CE/ROHS CERTIFIED
 IEC 62133 CERTIFIED
 UN38.3 TEST APPROVED
 AIN/SEA DG REGISTERED
 EXCEEDS ATO STANDARDS
 MSDS LABORATORY CERTIFIED

HOHM TECH CELLS:
 PSE CERTIFIED
 CE/ROHS CERTIFIED
 IEC 62133 CERTIFIED
 UN38.3 TEST APPROVED
 AIN/SEA DG REGISTERED
 EXCEEDS ATO STANDARDS
 MSDS LABORATORY CERTIFIED