

ROOMFLEX

Minimalistic folding door solution with no bottom channel for doors weighing up to 35kg and 50kg



Roomflex is an innovative, internal folding door system, designed to create and enhance flexible living environments. Unlike other internal folding door systems, Roomflex has been designed to completely eliminate the need for a bottom channel, allowing for an aesthetically pleasing, seamless walkway from room to room.

Homeowners can combine both open and broken plan living by neatly storing the doors to one side when the spaces are opened for entertaining or socialising. When closed, the smaller rooms can be used for independent activities.

Kits can be combined together to create various door configurations (see configuration plan).

Product Information

Product	Kit Order Code	Door Configuration	Max. Door Height	Max. Door Width	Door Thickness Range	Max. Door Weight
Roomflex 35kg	RFK1	2	3000mm	926mm	35 - 44mm	35kg
	RFK2	3	3000mm	926mm	35 - 44mm	35kg
	RFK3	4 (3 + 1)	3000mm	926mm	35 - 44mm	35kg
	RFK4	Swing door	3000mm	926mm	35 - 44mm	35kg
Roomflex 50kg	RF50K1	2	3000mm	926mm	35 - 44mm	50kg
	RF50K2	3	3000mm	926mm	35 - 44mm	50kg
	RF50K3	4 (3 + 1)	3000mm	926mm	35 - 44mm	50kg
	RFK4	Swing door	3000mm	926mm	35 - 44mm	50kg

Track Specification - track must be purchased in addition to kit

Short Code	Description
180/****	Anodised aluminium track in 2000, 2500, 3000, 3500, 4000, 5000 and 6000mm lengths

**** Replace by length of track for full short code

Kit Contents

Product	Component
RFK1 and RF50K1	Pivot Set (x 1)
	Hinge Handle Set (x 1)
	End Hanger Set (x 1)
RFK2 and RF50K2	110mm Flush Bolt (x 1) (FB110S)
	Pivot Set (x 1)
	Offset Handle Hinge Set (x 1)
	Intermediate Hanger Set (x 1)
RFK3 and RF50K3	110mm Flush Bolt (x 2) (FB110S)
	Pivot Set (x 2)
	Offset Handle Hinge Set (x 1)
RFK4	Intermediate Hanger Set (x 1)
	110mm Flush Bolt (x 2) (FB110S)
	Pivot Set (x 1)

Accessories



Frame Perimeter Seal (AQ21B) brown, also available in white



Door Perimeter Seal (AG63B) brown, also available in white



Track Seal in Black (BS10B)



Magnetic Door Stop for Pivot Door (FANTOM/S)

View our full range of accessories on page 136

CONFIGURATION

RFK1



RFK2



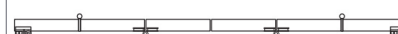
RFK3



RFK2 + RFK1



RFK2 + RFK2



RFK1 + RFK4

